

**12654-12658 W. Washington Boulevard
Los Angeles, CA 90066**

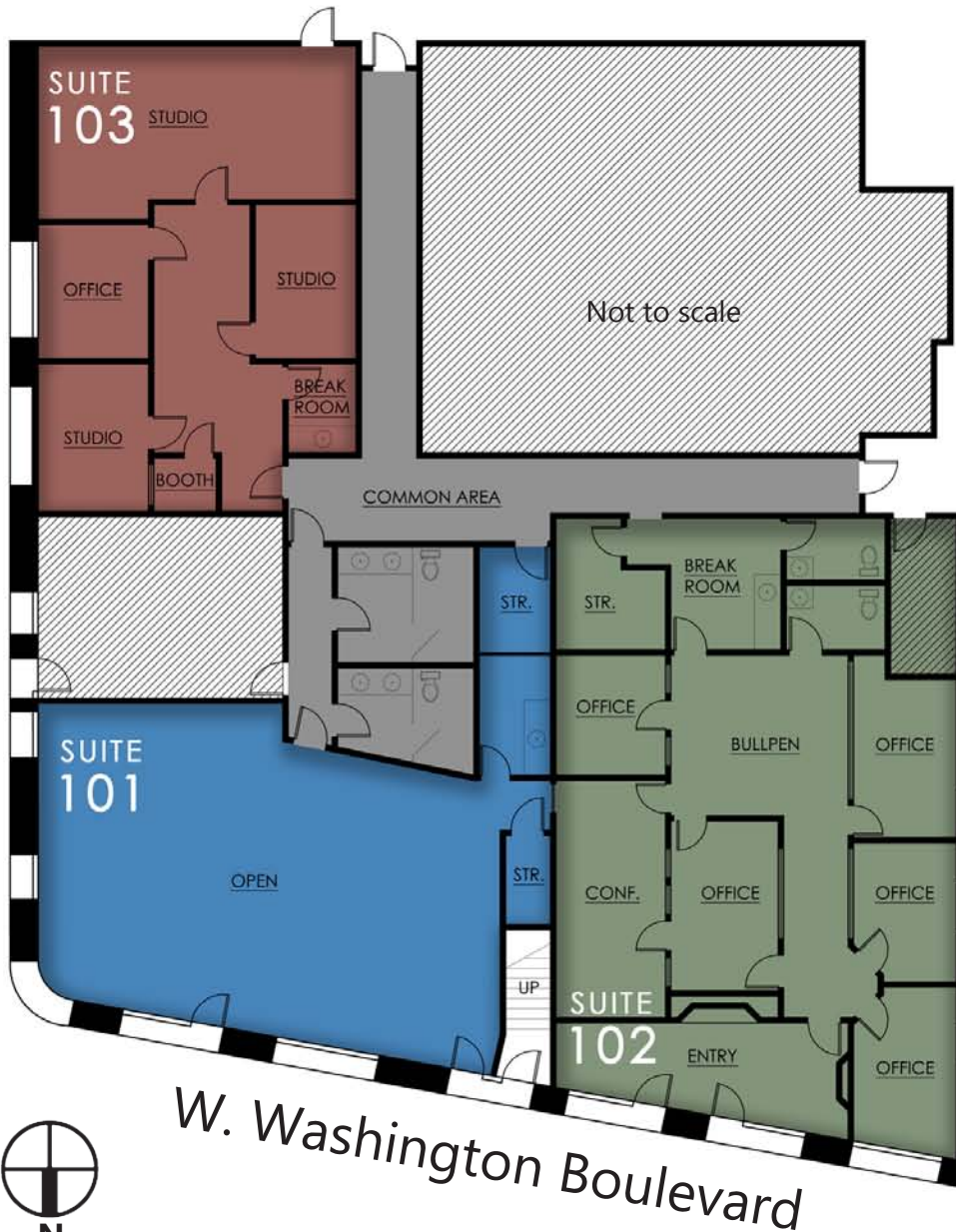
RETAIL OR OFFICE SPACE FOR

SHORT-TERM LEASE



BRIAN BOWEN
310.395.2663 x134
BRIAN@PARCOMMERCIAL.COM
Lic# 01930301

RAFAEL PADILLA
310.395.2663 X102
RAFAEL@PARCOMMERCIAL.COM
LIC# 00960188



W. Washington Boulevard

SUITE 101: Approximately 1,280 square feet
\$3,200 per month
Modified Gross (Net of Janitorial)

TYPE: Office/retail

PARKING: 3 spaces included

- Corner unit with entrance on Washington Boulevard
- Open space, storage and break room with sink
- Shared restrooms

SUITE 102: Approximately 2,300 square feet
\$6,500 per month
Modified Gross (Net of Janitorial)

TYPE: Office/retail

PARKING: 6 spaces included

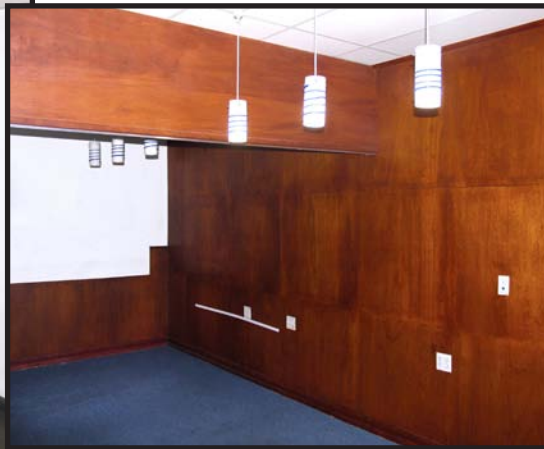
- Corner unit with entrance on Washington Boulevard
- Entry, 5 offices, conference, bullpen, storage, break room with sink
- Private men's and women's restrooms in suite

TERM: 1 year



<p>BRIAN BOWEN 310.395.2663 X134 BRIAN@PARCOMMERCIAL.COM LIC# 01930301</p>	<p>RAFAEL PADILLA 310.395.2663 X102 RAFAEL@PARCOMMERCIAL.COM LIC# 00960188</p>
---	---

PROPERTY PHOTOS

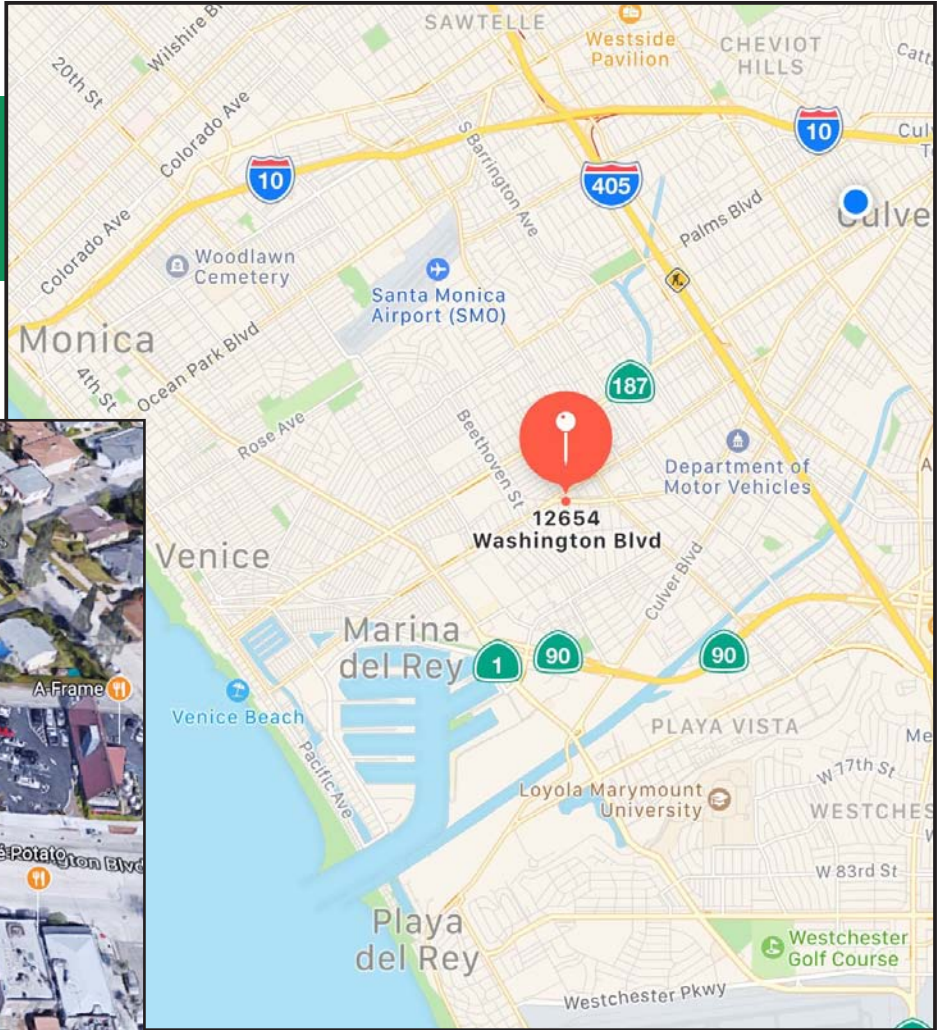


www.parcommercial.com

BRIAN BOWEN
310.395.2663 X134
BRIAN@PARCOMMERCIAL.COM
LIC# 01930301

RAFAEL PADILLA
310.395.2663 X102
RAFAEL@PARCOMMERCIAL.COM
LIC# 00960188

All information furnished is from sources deemed reliable and which we believe to be correct, but no representation or guarantee is given as to its accuracy and is subject to errors and omissions. All measurements are approximate and have not been verified by Broker. You are advised to conduct an independent investigation to verify all information.



BRIAN BOWEN
310.395.2663 X134
BRIAN@PARCOMMERCIAL.COM
LIC# 01930301

RAFAEL PADILLA
310.395.2663 X102
RAFAEL@PARCOMMERCIAL.COM
LIC# 00960188

All information furnished is from sources deemed reliable and which we believe to be correct, but no representation or guarantee is given as to its accuracy and is subject to errors and omissions. All measurements are approximate and have not been verified by Broker. You are advised to conduct an independent investigation to verify all information.