



# RETAIL SPACE FOR LEASE IN DOWNTOWN SANTA MONICA



**1241 5TH STREET, SANTA MONICA, CA 90401**

## SIZE:

Approximately 1,499 square feet

## RATE:

\$6.00 per square foot per month, NNN  
(NNN estimated to be \$0.90 per square foot per month)

## PARKING:

3 spaces included, additional parking currently at \$250 per space per month

## TERM:

3 - 5 years

## AVAILABLE IMMEDIATELY

**RAFAEL PADILLA**

**310.395.2663 x102**

**RAFAEL@PARCOMMERCIAL.COM**

**Lic# 00960188**

**ARTHUR PETER**

**310.395.2663 x101**

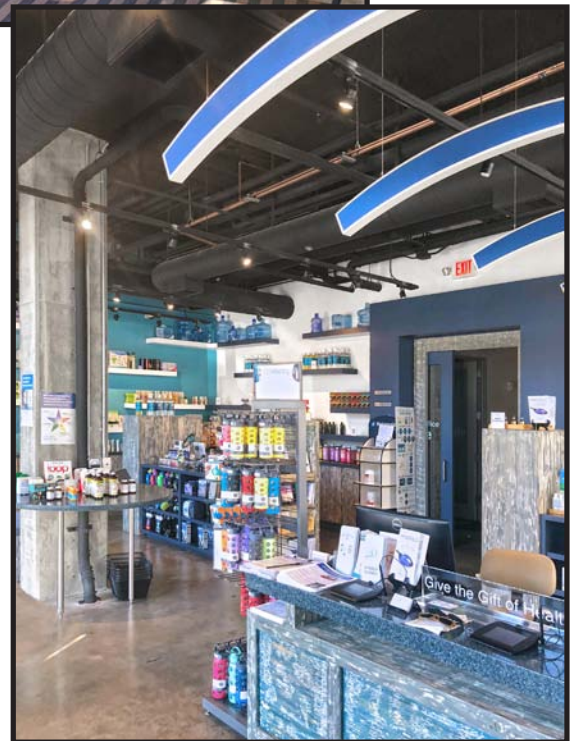
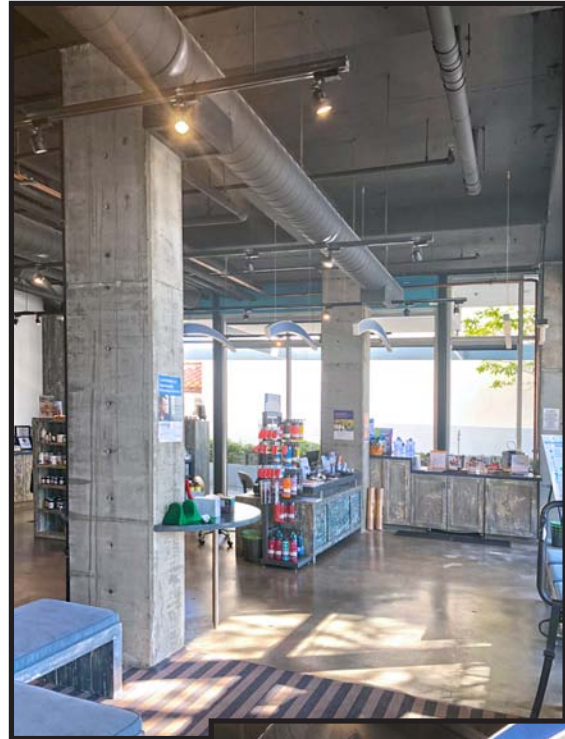
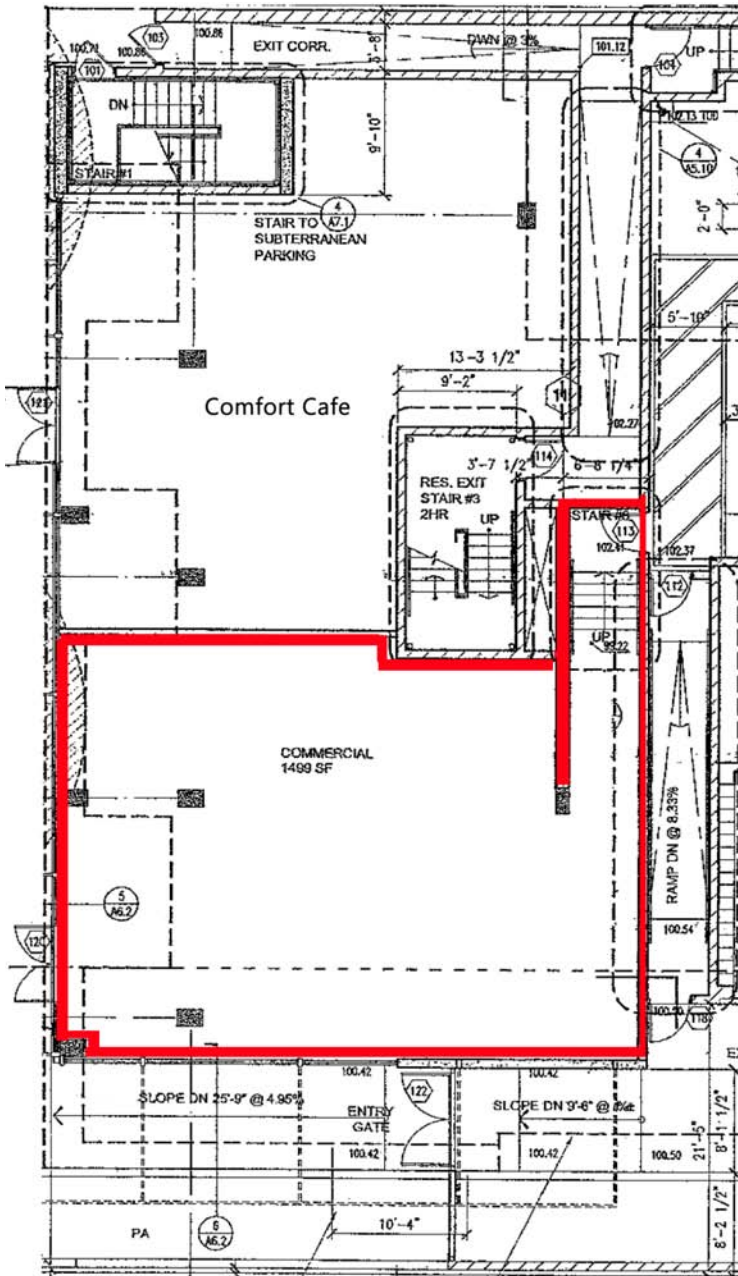
**ARTHUR@PARCOMMERCIAL.COM**

**Lic# 01068613**

- **Two blocks from the world famous 3<sup>rd</sup> Street Promenade**
- **49 residential units above the space**
- **Located in the hub of the hottest market in SoCal**
- **Great exposure with signage available**
- **High ceilings and polished concrete floor**
- **Near large public parking structures and lots**
- **Superb demographics**

1250 6th St., #303, Santa Monica, CA 90401 • 310.395.2663 • [www.parcommercial.com](http://www.parcommercial.com)

# FLOOR PLAN & PHOTOS



**RAFAEL PADILLA**  
 310.395.2663 x102  
 RAFAEL@PARCOMMERCIAL.COM  
 Lic# 00960188

**ARTHUR PETER**  
 310.395.2663 x101  
 ARTHUR@PARCOMMERCIAL.COM  
 Lic# 01068613



# NEIGHBORHOOD HIGHLIGHTS



**Third Street Promenade**



**Le Meridien Delfina Santa Monica**



**Santa Monica Place**



**Tongva Park**



**The Bungalow at the Fairmont Santa Monica**



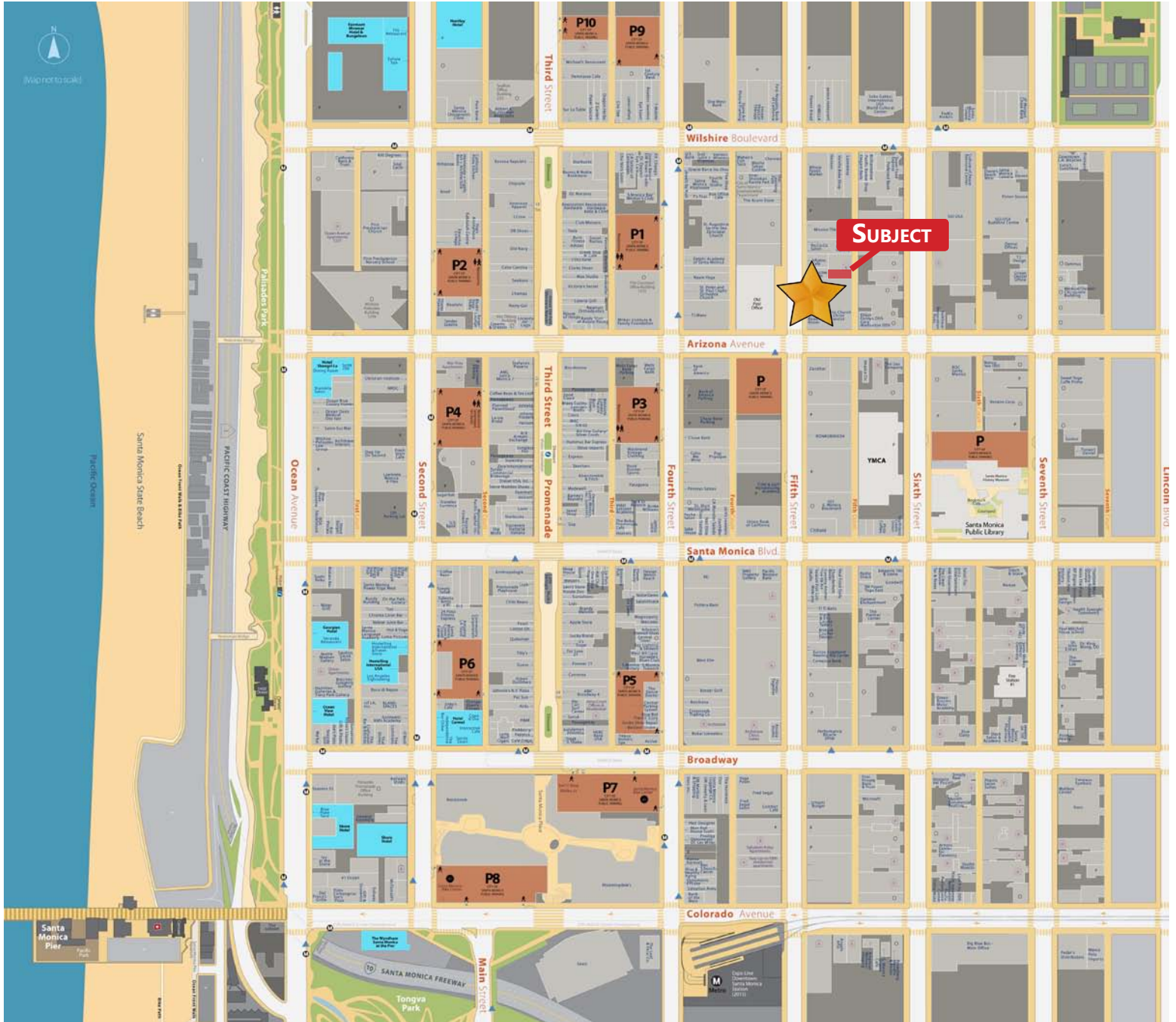
**Santa Monica Pier**

**RAFAEL PADILLA**  
310.395.2663 x102  
RAFAEL@PARCOMMERCIAL.COM  
Lic# 00960188

**ARTHUR PETER**  
310.395.2663 x101  
ARTHUR@PARCOMMERCIAL.COM  
Lic# 01068613



# AREA MAP



**RAFAEL PADILLA**  
310.395.2663 x102  
RAFAEL@PARCOMMERCIAL.COM  
Lic# 00960188

**ARTHUR PETER**  
310.395.2663 x101  
ARTHUR@PARCOMMERCIAL.COM  
Lic# 01068613

