

1,708 SF TO 7,508 SF OF CONTIGUOUS OFFICE SPACE FOR LEASE



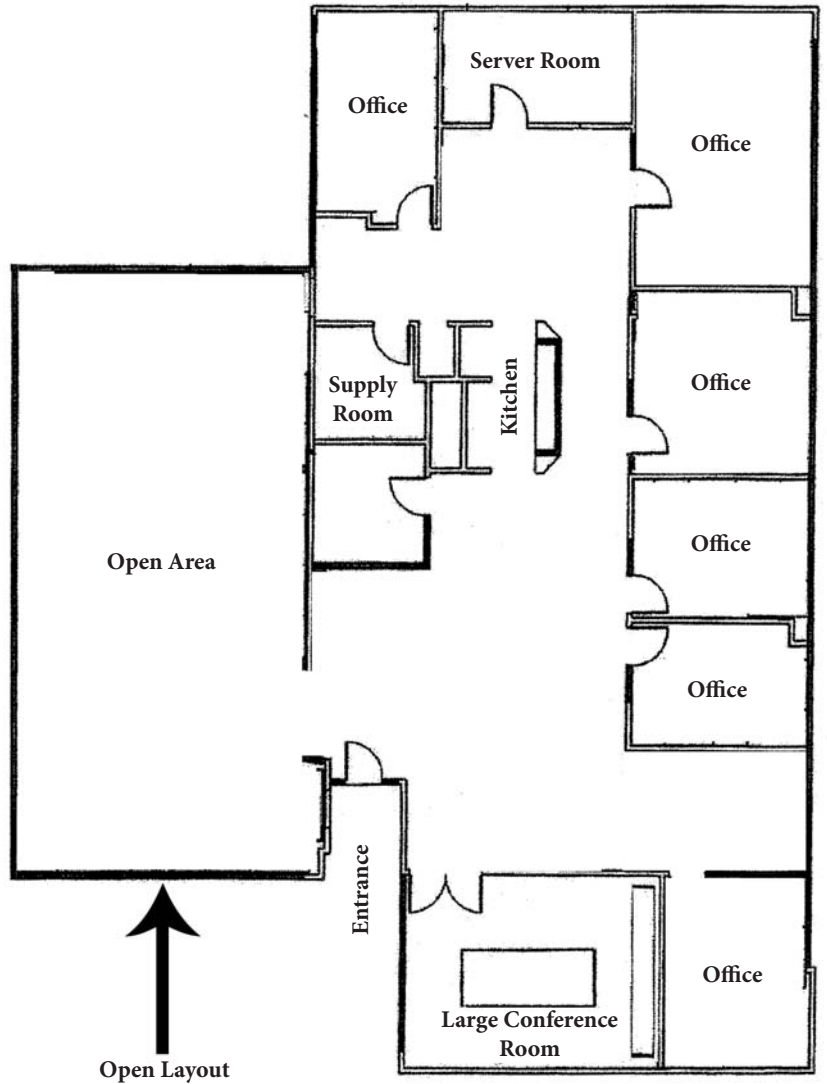
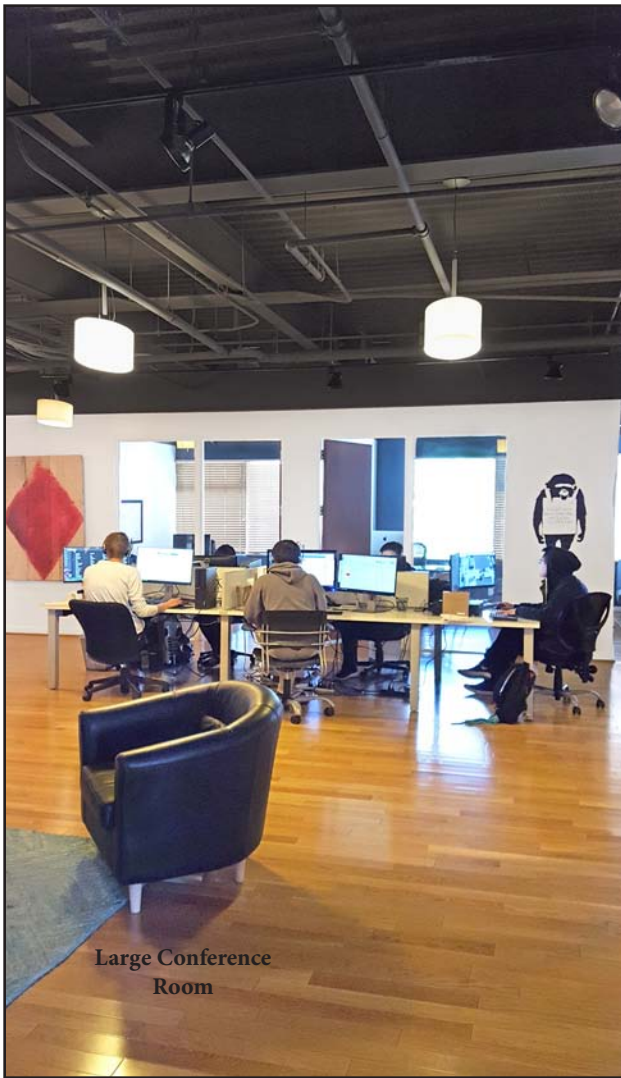
1411 5TH STREET, SANTA MONICA, CA 90401

- SUITE 300:** 5,800 SQUARE FEET
(6 OFFICES, CONFERENCE ROOM, KITCHEN AND LARGE OPEN AREAS)
- SUITE 305:** 1,708 SQUARE FEET
(3 WINDOW OFFICES, 1 INTERIOR OFFICE, OPEN AREA, KITCHEN)
- RATE:** \$4.85 PER SQUARE FOOT PER MONTH, MG
- AVAILABLE:** IMMEDIATELY
- TERM:** 3-5 YEARS
- PARKING:** 3/1000 @ \$200 PER SPACE PER MONTH

- TWO BLOCKS FROM WORLD FAMOUS THIRD STREET PROMENADE
- HIGH VISIBILITY ON SANTA MONICA BOULEVARD IN DOWNTOWN SANTA MONICA
- HIGHLY CREATIVE SPACE
- HARDWOOD FLOORS
- OPERABLE WINDOWS



ROD BARSHOOK
310.395.2663 x111
ROD@PARCOMMERCIAL.COM
LIC#01206317



Suite 300
 Approximately 5,800 SF



ROD BARSHOOK
 310.395.2663 x111
 ROD@PARCOMMERCIAL.COM
 LIC#01206317

Suite 300 & 305

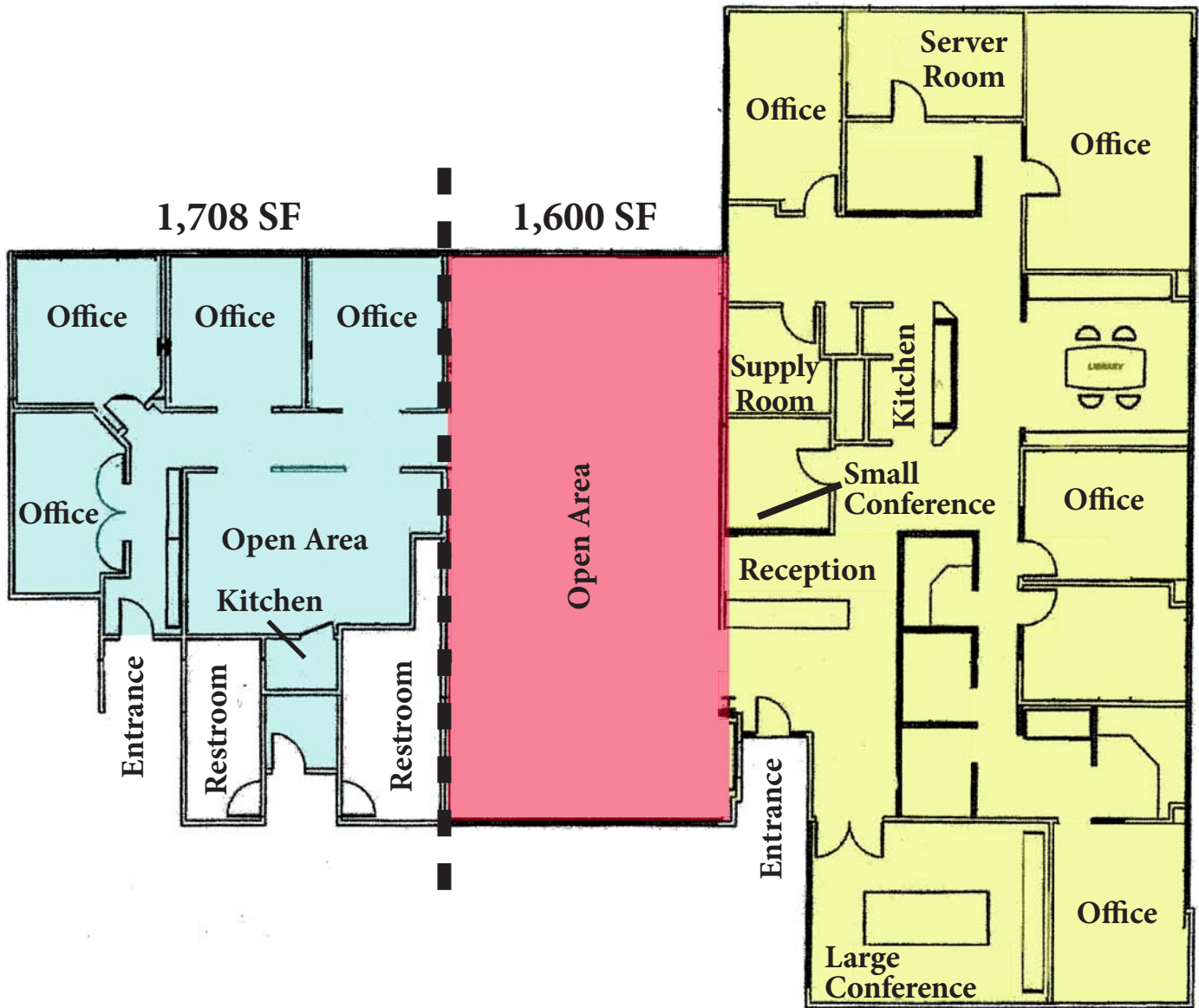
Approximately 7,508 SF of Combined Space

(Divisible to approximately 1,600 SF, 1,708 SF, 3,308 SF, 4,200 SF or 5,800 SF)

7,508 SF Combined

5,800 SF Combined

4,200 SF



ROD BARSHOOK
310.395.2663 x111

ROD@PARCOMMERCIAL.COM

LIC#01206317