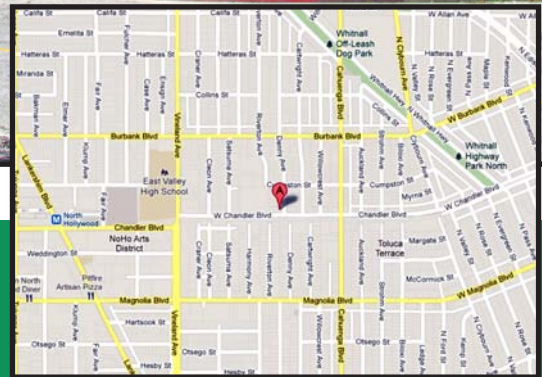




INDUSTRIAL/COMMERCIAL SPACE FOR LEASE



10731 CHANDLER BOULEVARD NORTH HOLLYWOOD, CA 91601

SIZE: Approximately 4,500 square feet

RATE: \$6,000 per month, NNN
(NNN estimated to be \$0.10 per square foot per month)

TERM: 5 years

PARKING: Two dedicated free spaces on site plus street parking

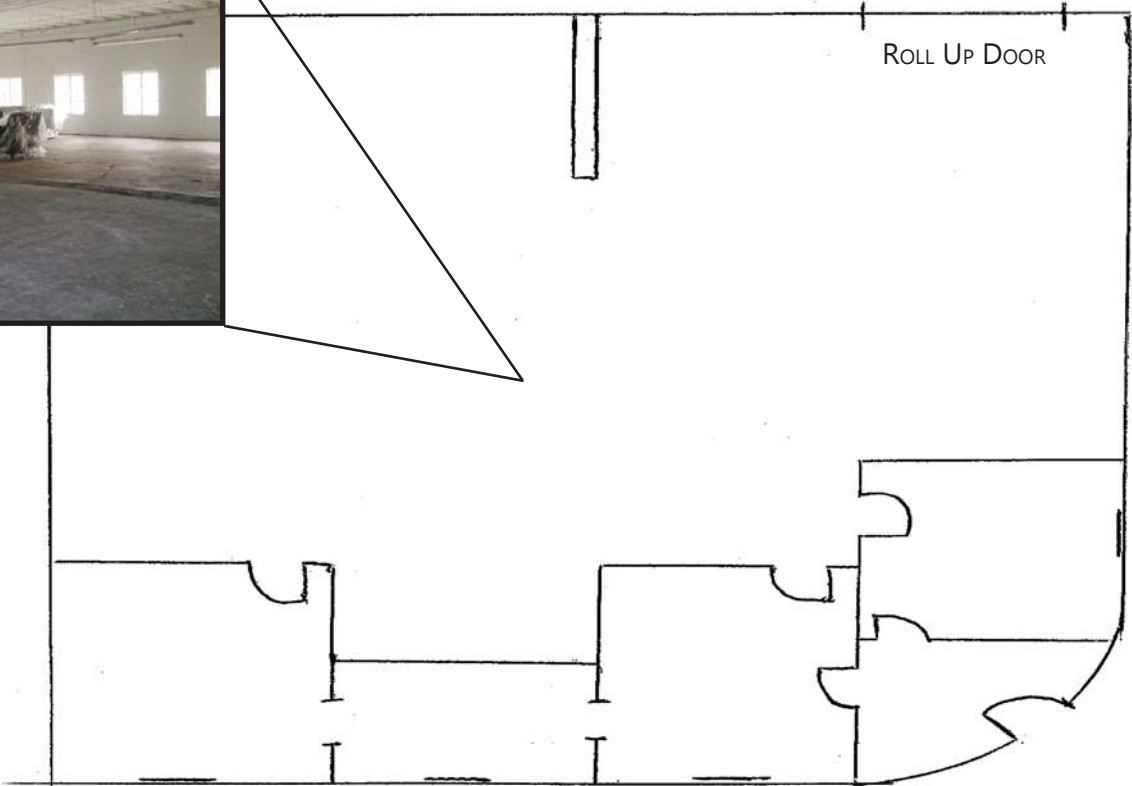
AVAILABLE: January 1, 2021

- Air-conditioned private and support offices and a restroom
- 11 foot high ceilings-clear span
- Part of the iconic North Hollywood (NOHO) Arts district
- Walking distance to Vineland Metro-Rail Station
- New bicycle/jogging path connecting to Burbank

JEFF JAROW
310.395.2663 x105 • jeff@parcommercial.com
Lic# 00870996

1250 6th St., #303, Santa Monica, CA 90401 • 310.395.2663 • www.parcommercial.com

FLOOR PLAN



CHANDLER BOULEVARD

DENNY AVENUE

JEFF JAROW
310.395.2663 x105
jeff@parcommercial.com
Lic# 00870996

