

# OFFICE SPACE FOR LEASE



ADDRESS: 3110 MAIN STREET, SANTA MONICA, CA 90405

SUITE 205: 2,006 SQUARE FEET  
\$15,000 PER MONTH, MG (NET OF UTILITIES)  
3 OFFICES, CONFERENCE ROOM, KITCHEN, RECEPTION AND STORAGE ROOM

TERM: 3-5 YEARS

PARKING: 3/1000 @ \$150 PER SPACE PER MONTH UNRESERVED AND \$225 PER RESERVED SPACE PER MONTH

AVAILABLE: AUGUST 1, 2018

- ON-SITE, 24 HOUR BUILDING SECURITY / KEY CARD ACCESS
- WALKING DISTANCE TO THE BEACH
- HIGH PROFILE EXCLUSIVE OFFICE BUILDING
- OPERABLE WINDOWS
- LOCATED ON TRENDY MAIN STREET IN SANTA MONICA WITH NUMEROUS AMENITIES NEARBY INCLUDING RESTAURANTS, BANKS, CONVENIENCE STORES



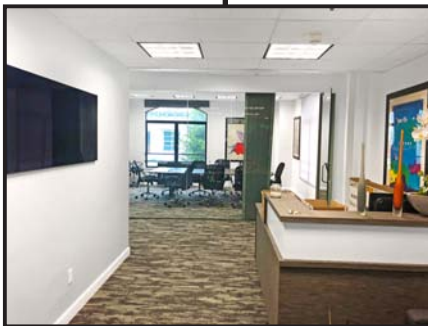
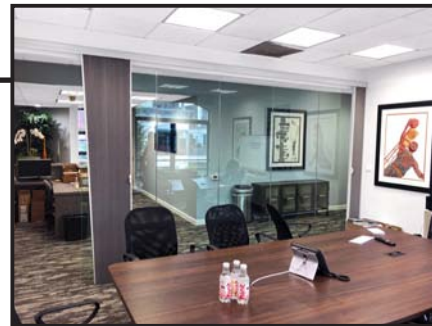
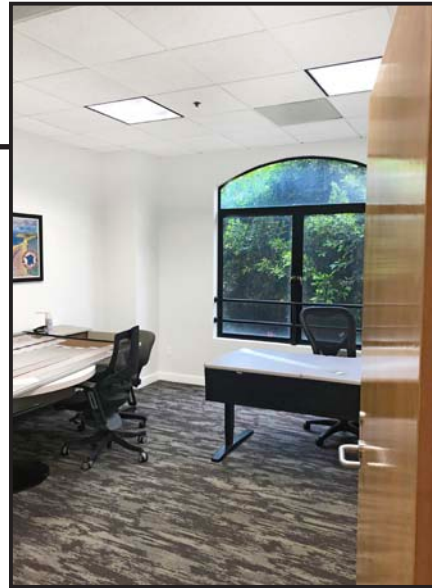
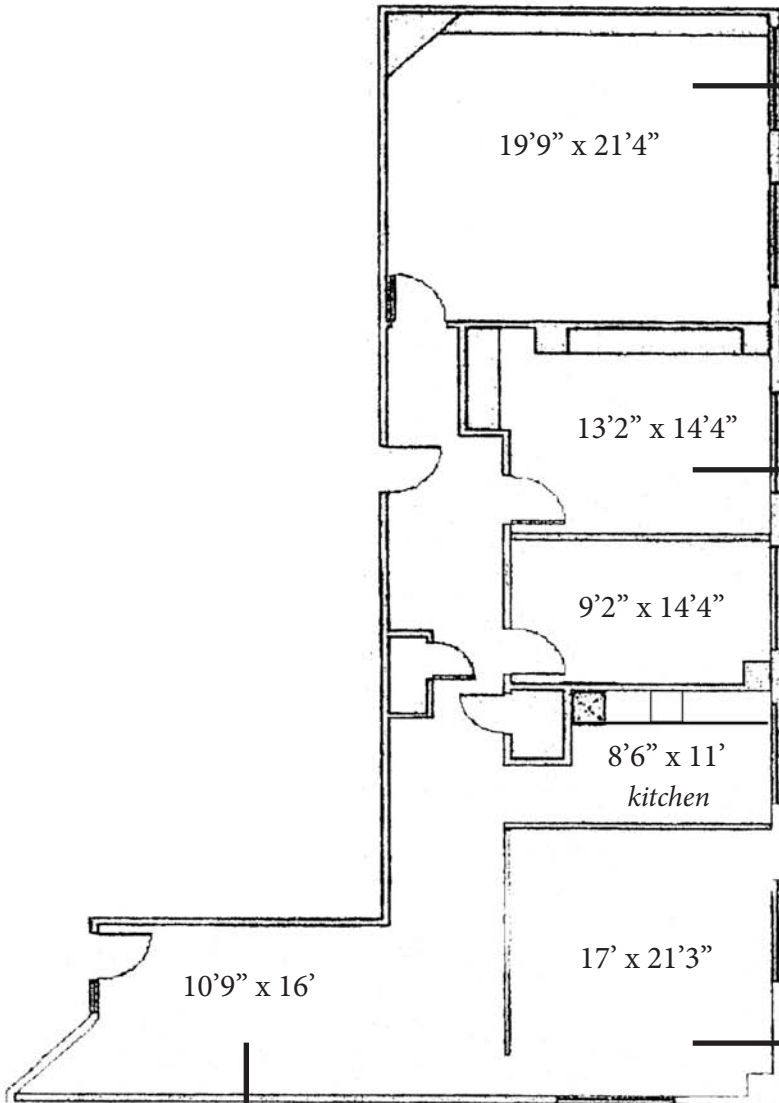
**RAFAEL PADILLA**  
310.395.2663 X102  
RAFAEL@PARCOMMERCIAL.COM

**GREG ECKHARDT**  
310.395.2663 X103  
GECKO@PARCOMMERCIAL.COM

3110 MAIN STREET, SANTA MONICA

# OFFICE SPACE FOR LEASE

3110 MAIN STREET, SANTA MONICA



SUITE 205



**RAFAEL PADILLA**  
310.395.2663 X102  
RAFAEL@PARCOMMERCIAL.COM

**GREG ECKHARDT**  
310.395.2663 X103  
GECKO@PARCOMMERCIAL.COM



# 3110 MAIN STREET, SANTA MONICA

ASHLAND AVENUE		MAIN STREET	
CITY PARKING	Accents Jewelry		Coffee Bean & Tea Leaf
	Bike Attack Electric		Main Street Bagels
	Holy Guacamole		Rick's Tavern
	Groundwork		Bulldog Realtors
	Puzzle Zoo		Library Alehouse
	51st Watch & Jewelry		Deluxe Nail Bar & Spa
	Kinney Street		Tsukut Sushi
	Aura Shop		Hinterland
	Pagliari's Market		Michael Bishay Salon
	Zumani Nails & Spa	Bryn Walker	
	Circle Bar	Love Adorned	
	Muji	Free People	
	Planet Blue	Lazy Bones	
		C.P. Shades	
		Weego Home	
		Main	
		Obrien's Irish Pub	
PIER AVENUE		MAIN STREET	
	M. Hanks Gallery		Sumiko
	Wells Fargo		Via Veneto
		LA Urban Fitness	
MARINE STREET		MAIN STREET	
	T-Mobile		Ciel Espresso
	Natures Grooming		Rudy's Barbershop
	Hollywood Smoke		Green's Up-Salads
	Bulletproof Coffee		Eye's on Main
			Prince of Italy
			Auto Desk
			Mona Moore
			Pamela Barish
			L. Frank
		Offices	
		The Firehouse	
ROSE AVENUE		MAIN STREET	

*For reference only, actual tenant may have changed*



**RAFAEL PADILLA**  
 310.395.2663 X102  
 RAFAEL@PARCOMMERCIAL.COM

**GREG ECKHARDT**  
 310.395.2663 X103  
 GECKO@PARCOMMERCIAL.COM