



1621 WILSHIRE BOULEVARD
SANTA MONICA, CA 90403

RESTAURANT SPACE FOR LEASE



RAFAEL PADILLA
310.395.2663 x102
RAFAEL@PARCOMMERCIAL.COM
LIC#00960188

GREG ECKHARDT
310.395.2663 x103
GECKO@PARCOMMERCIAL.COM
LIC#01255469

ARTHUR PETER
310.395.2663 x101
ARTHUR@PARCOMMERCIAL.COM
LIC#0108613

1621 WILSHIRE BOULEVARD, SANTA MONICA, CA 90403

SIZE: APPROXIMATELY 2,509 SQUARE FEET

RATE: \$5.25 PER SQUARE FOOT PER MONTH, NNN
(NNN ESTIMATED TO BE \$.80 PER SQUARE FOOT PER MONTH)

TERM: 5 - 10 YEARS

PARKING: SHARED ON-SITE PARKING BEHIND BUILDING

AVAILABLE: IMMEDIATELY

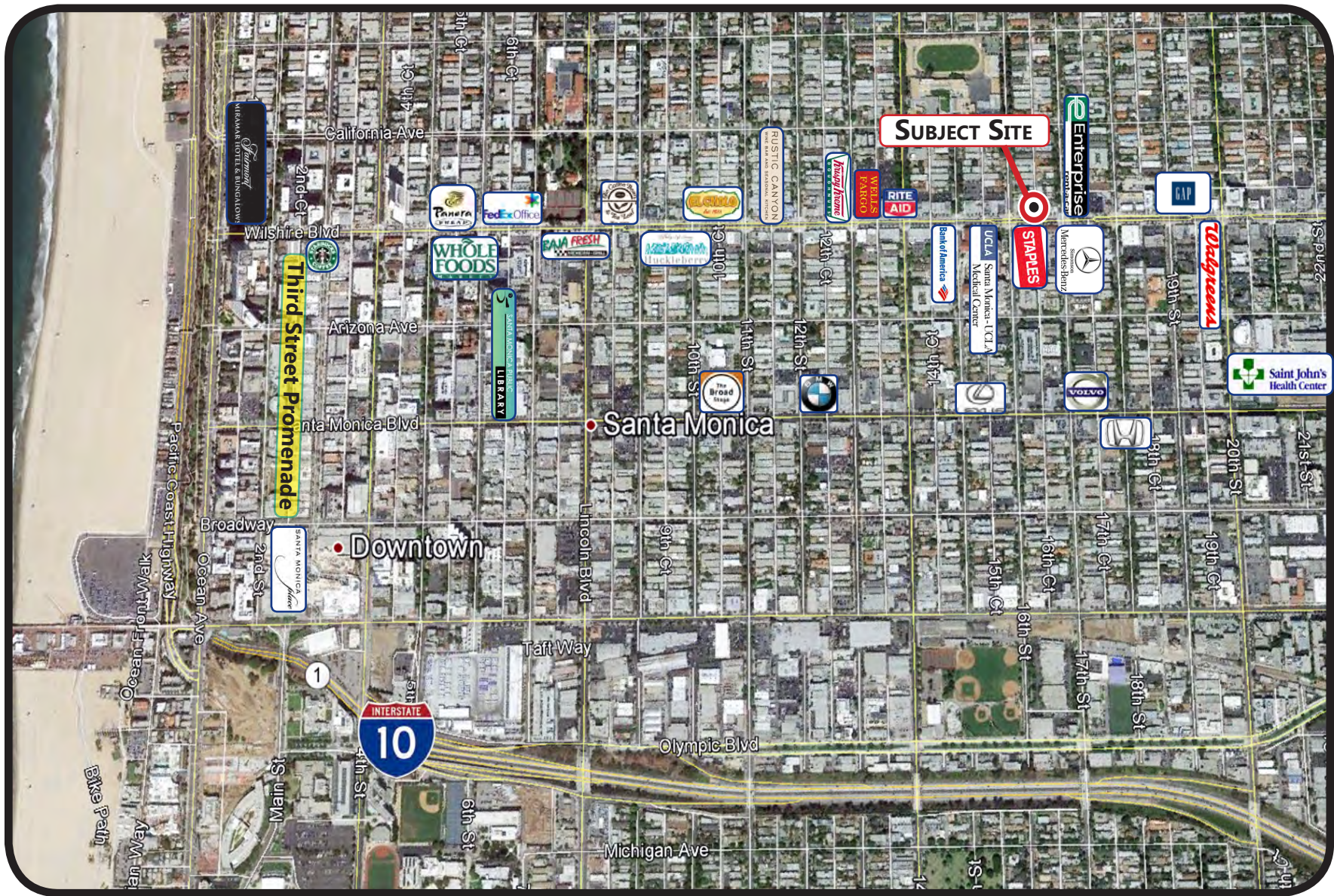
- PRIOR OPERATOR HAD BEER & WINE LICENSE
- HIGHLY AFFLUENT AREA PULLING FROM BOTH SANTA MONICA AND BRENTWOOD
- STRONG DEMOGRAPHICS
- PROMINENT IDENTITY ON MAJOR THOROUGHFARE
- LOCATED ON BUSY WILSHIRE BOULEVARD WITH HIGH TRAFFIC COUNTS IN EXCESS OF 41,000 VEHICLES PER DAY
- NEIGHBORS INCLUDE DUNKIN DONUTS, W.I. SIMONSON MERCEDES, SANTA MONICA HOSPITAL, STAPLES AND BANK OF AMERICA



RAFAEL PADILLA
310.395.2663 x102
RAFAEL@PARCOMMERCIAL.COM
LIC#00960188

GREG ECKHARDT
310.395.2663 x103
GECKO@PARCOMMERCIAL.COM
LIC#01255469

ARTHUR PETER
310.395.2663 x101
ARTHUR@PARCOMMERCIAL.COM
LIC#0108613



RAFAEL PADILLA
 310.395.2663 x102
 RAFAEL@PARCOMMERCIAL.COM
 LIC#00960188

GREG ECKHARDT
 310.395.2663 x103
 GECKO@PARCOMMERCIAL.COM
 LIC#01255469

ARTHUR PETER
 310.395.2663 x101
 ARTHUR@PARCOMMERCIAL.COM
 LIC#0108613

All information furnished is from sources deemed reliable and which we believe to be correct, but no representation or guarantee is given as to its accuracy and is subject to errors and omissions. All measurements are approximate and have not been verified by Broker. You are advised to conduct an independent investigation to verify all information.