



WESTWOOD CREATIVE OFFICE SPACE FOR LEASE



2315 WESTWOOD BOULEVARD, 2ND FLOOR, LOS ANGELES, CA 90064

PREMISES: Approximately 2,325 square feet, plus large balcony

RENT: **NEWLY REDUCED!** ~~\$2.65~~ **\$2.35** per square foot per month, Modified Gross (tenant pays electric and cleaning)

PARKING: 1 tandem space included; extra available parking at \$100 per space per month; customer parking available

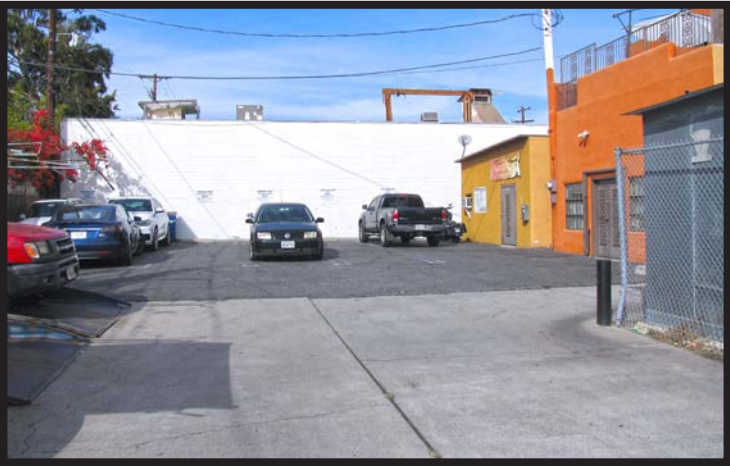
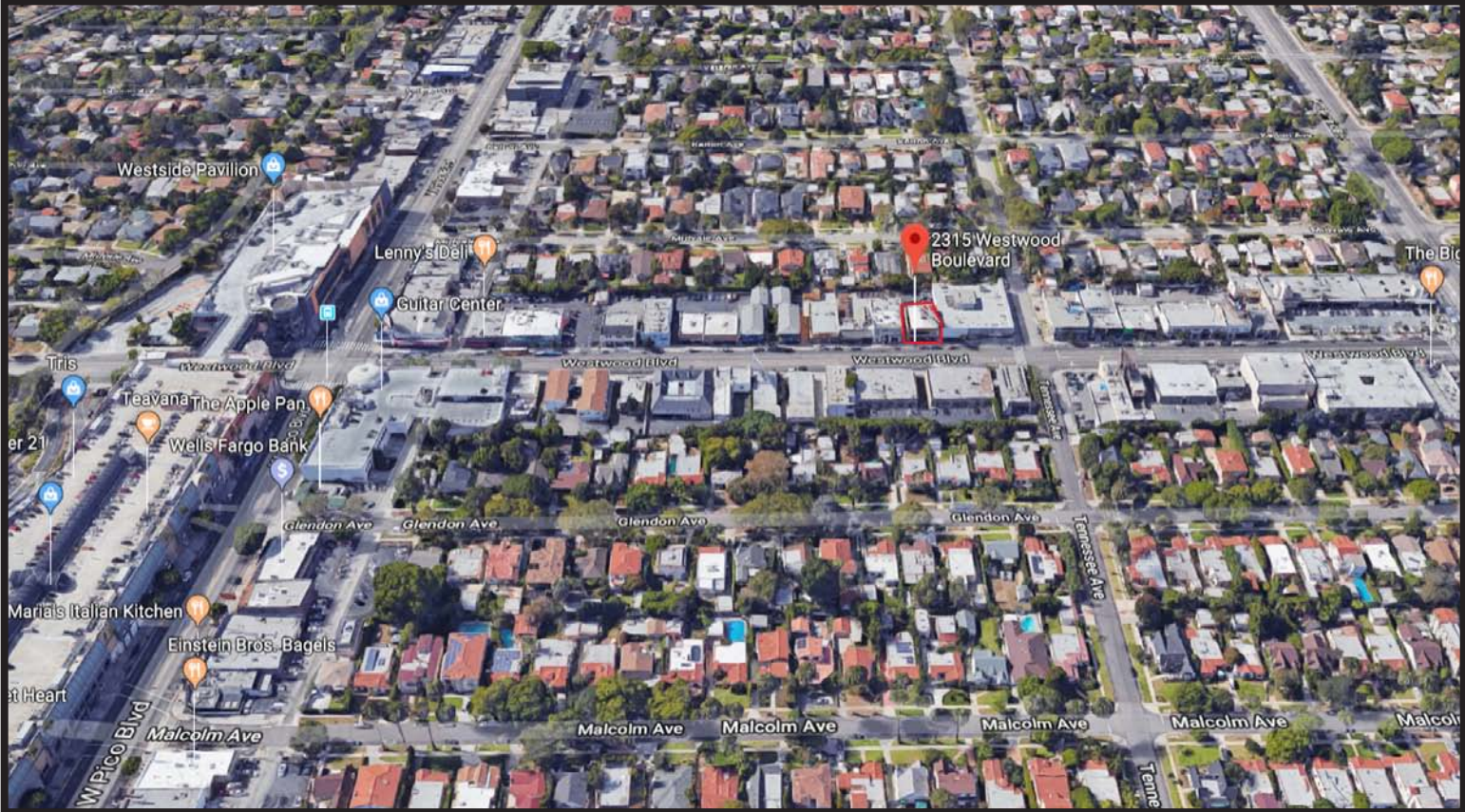
AVAILABLE IMMEDIATELY

RUDY QUINTANAR
310.395.2663 x128
RUDY@PARCOMMERCIAL.COM
Lic# 00912513

1250 6th St., #303, Santa Monica, CA 90401 • 310.395.2663 • www.parcommercial.com

- 9 offices, conference meeting room, reception area, kitchenette, plus storage
- 2nd floor office space in an excellent Westwood location
- Minutes to the Westside Pavillion, Apple Pan, Island's, Lenny's Deli and numerous banks
- Bright and airy with skylights, operable windows and hardwood floors

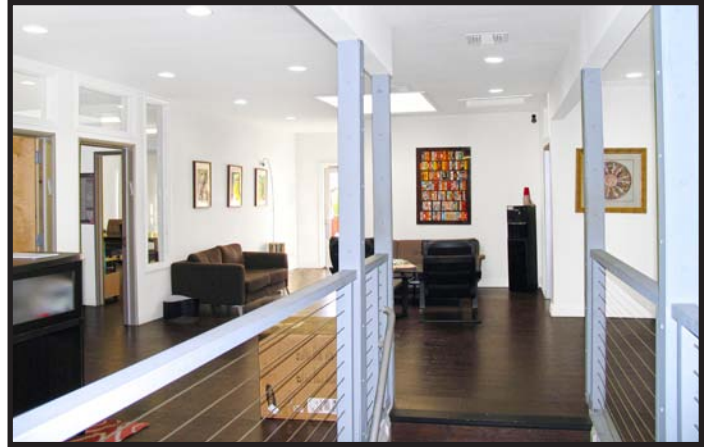
AERIAL MAP



RUDY QUINTANAR
310.395.2663 x128
RUDY@PARCOMMERCIAL.COM
Lic# 00912513



BUILDING PHOTOS



RUDY QUINTANAR
310.395.2663 x128
RUDY@PARCOMMERCIAL.COM
Lic# 00912513

