



IDENTITY WILSHIRE BUILDING

LEASE AS OFFICE/MEDICAL/RETAIL SPACE



2515 WILSHIRE BOULEVARD, SANTA MONICA, CA 90403

SIZE: Approximately 3,800 square feet

RATE: \$15,010 per month, MG
(Tenant pays interior janitorial and utilities)

TERM: 3-5 years

PARKING: Twelve (12) spaces total. Eight (8) single spaces and two (2) rows of tandem.
Parking rate is \$75 per space

AVAILABLE: Immediately

ARTHUR PETER
310.395.2663 x101
ARTHUR@PARCOMMERCIAL.COM
Lic# 01068613

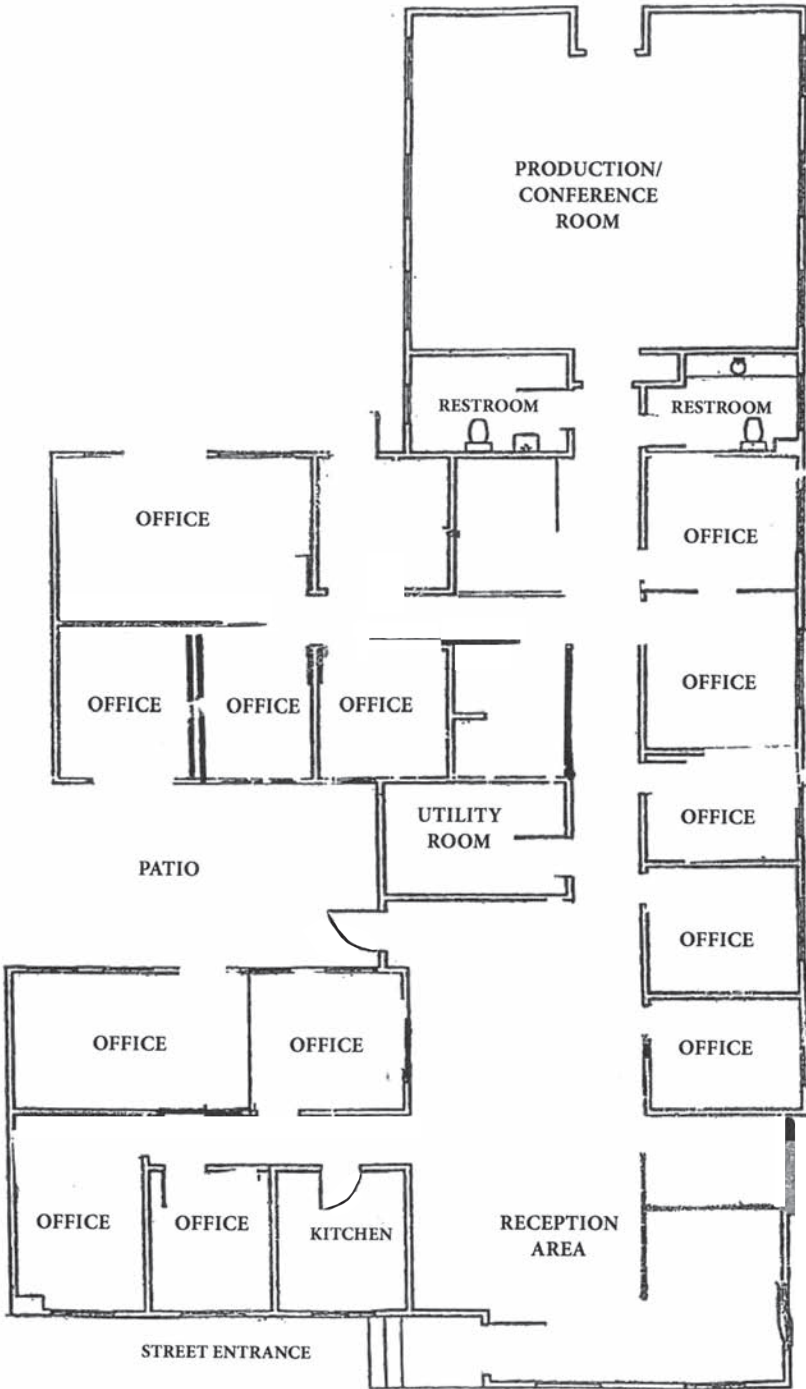
RAFAEL PADILLA
310.395.2663 x102
RAFAEL@PARCOMMERCIAL.COM
Lic# 00960188

- Freestanding building on Wilshire Boulevard
- Thirteen offices including open bullpen areas
- Bright space with operable windows, full kitchen and outdoor patio area
- Two full bathrooms, one with shower
- Close to Douglas Park, many restaurants and amenities
- Neighbors include Starbucks, Relax the Back, Verizon and New Balance

1250 6th St., #303, Santa Monica, CA 90401 • 310.395.2663 • www.parcommercial.com

All information furnished is from sources deemed reliable and which we believe to be correct, but no representation or guarantee is given as to its accuracy and is subject to errors and omissions. All measurements are approximate and have not been verified by Broker. You are advised to conduct an independent investigation to verify all information.

FLOOR PLAN



WILSHIRE BOULEVARD

ARTHUR PETER
310.395.2663 x101
ARTHUR@PARCOMMERCIAL.COM
Lic# 01068613

RAFAEL PADILLA
310.395.2663 x102
RAFAEL@PARCOMMERCIAL.COM
Lic# 00960188



PROPERTY PHOTOS

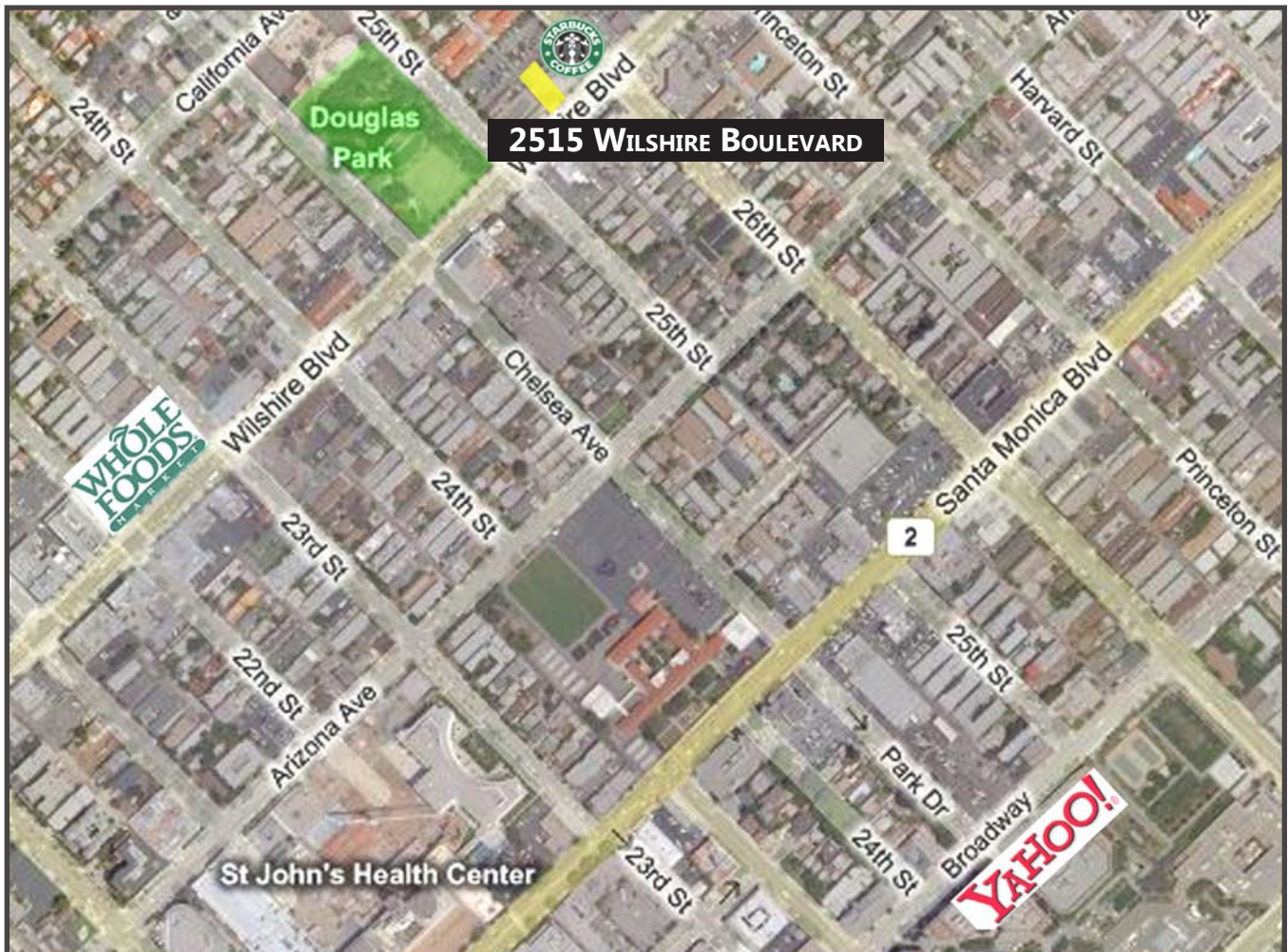


ARTHUR PETER
310.395.2663 x101
ARTHUR@PARCOMMERCIAL.COM
Lic# 01068613

RAFAEL PADILLA
310.395.2663 x102
RAFAEL@PARCOMMERCIAL.COM
Lic# 00960188



AREA MAP



ARTHUR PETER
310.395.2663 x101
ARTHUR@PARCOMMERCIAL.COM
Lic# 01068613

RAFAEL PADILLA
310.395.2663 x102
RAFAEL@PARCOMMERCIAL.COM
Lic# 00960188

