



PRIVATE OFFICE SPACE FOR SUBLEASE IN SANTA MONICA



**2601 OCEAN PARK BOULEVARD, SUITE 316
SANTA MONICA, CA 90405**

SIZE

Approximately 1,893 square feet

RATE

\$7,350 per month, Full-Service

PARKING

Up to 6 spaces at \$110 per space reserved,
\$125 per space covered

TERM

Through July 18, 2019

AVAILABLE: April 1, 2018

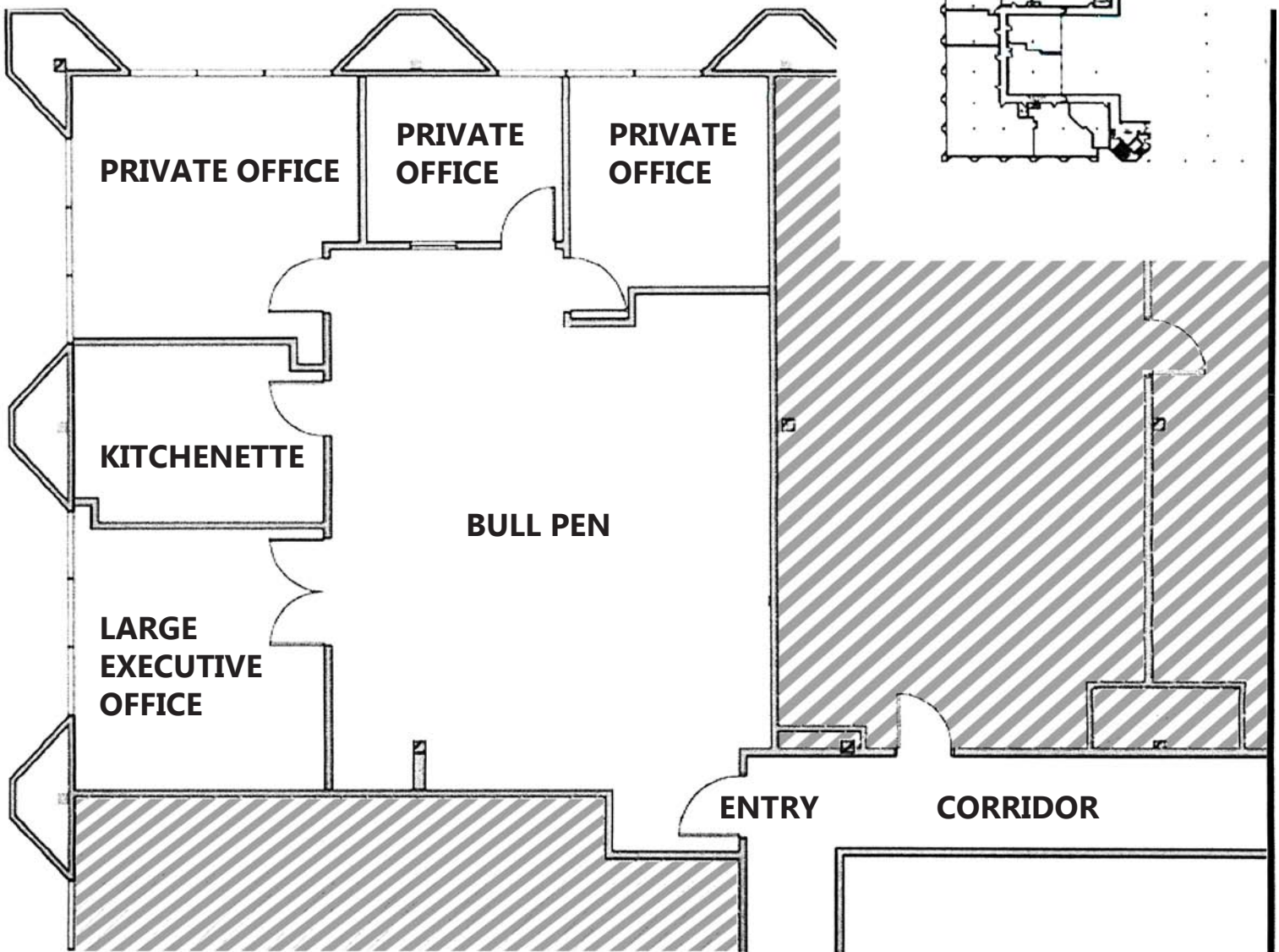
JEFF JAROW
310.395.2663 X105
JEFF@PARCOMMERCIAL.COM
LIC# 00870996

1250 6th St., #303, Santa Monica, CA 90401 • 310.395.2663 • www.parcommercial.com

- High income area with strong demographics
- Walk to Starbucks, Coffee Bean, The Counter, Il Forno and Menchies
- Close to 24 Hour Fitness, The Art Institute, Cloverfield Park and the Santa Monica Airport
- 3 private offices, 1 large executive office, bull pen and kitchenette



SUITE 316 FLOOR PLAN



2601 OCEAN PARK BOULEVARD

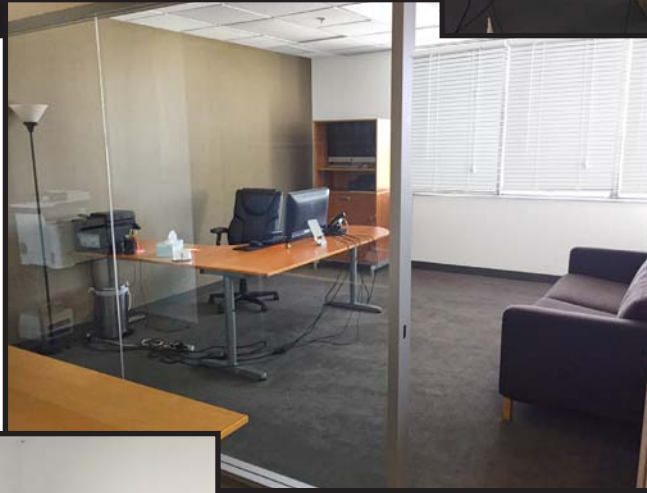
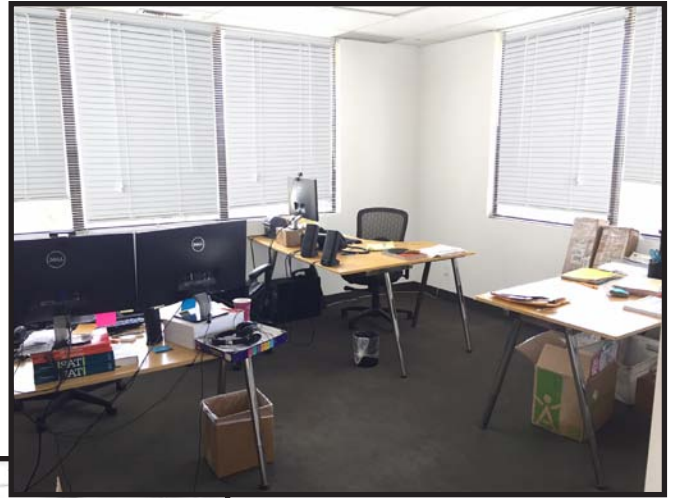
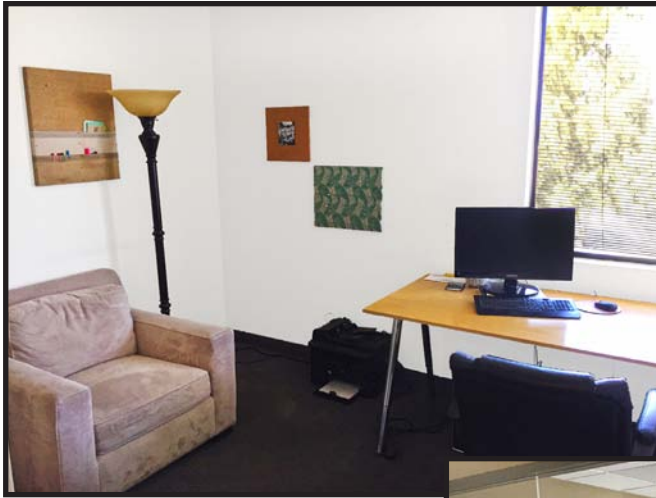
JEFF JAROW
310.395.2663 X105
JEFF@PARCOMMERCIAL.COM
LIC# 00870996

1250 6th St., #303, Santa Monica, CA 90401 • 310.395.2663 • www.parcommercial.com

All information furnished is from sources deemed reliable and which we believe to be correct, but no representation or guarantee is given as to its accuracy and is subject to errors and omissions. All measurements are approximate and have not been verified by Broker. You are advised to conduct an independent investigation to verify all information.



SUITE 316 PHOTOS



JEFF JAROW
310.395.2663 X105
JEFF@PARCOMMERCIAL.COM
LIC# 00870996

1250 6th St., #303, Santa Monica, CA 90401 • 310.395.2663 • www.parcommercial.com

All information furnished is from sources deemed reliable and which we believe to be correct, but no representation or guarantee is given as to its accuracy and is subject to errors and omissions. All measurements are approximate and have not been verified by Broker. You are advised to conduct an independent investigation to verify all information.