



RETAIL SPACE FOR LEASE



4031 SEPULVEDA BOULEVARD, CULVER CITY, CA 90230

SIZE: Approximately 1,433 square feet

RATE: \$2.65 per square foot per month, NNN
(NNN estimated to be \$0.42 per square foot per month)

PARKING: Dedicated parking in rear lot

TERM: 3-5 years

AVAILABLE IMMEDIATELY

RAFAEL PADILLA
310.395.2663 x102
RAFAEL@PARCOMMERCIAL.COM
Lic# 00960188

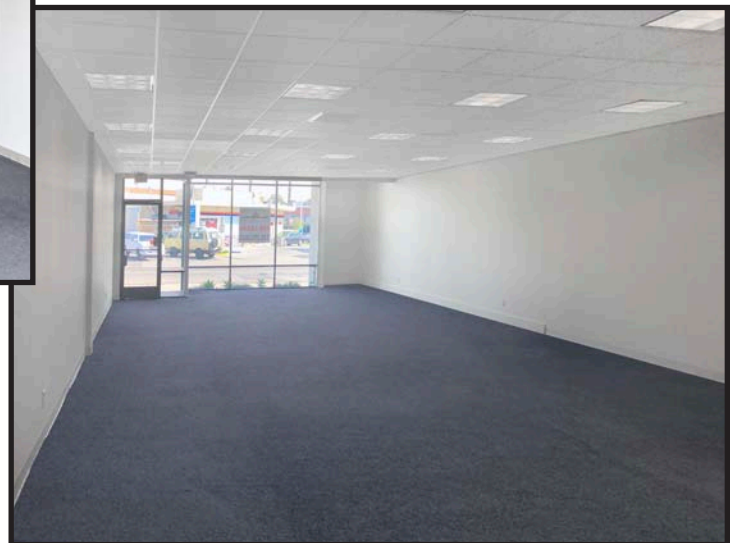
ARTHUR PETER
310.395.2663 x101
ARTHUR@PARCOMMERCIAL.COM
Lic# 01068613

- Great signage
- Approximately 22,000 cars per day pass this site
- Major North/South thoroughfare
- Easily accessed from a variety of major boulevards
- Easy access to 405 freeway
- Air conditioned

1250 6th St., #303, Santa Monica, CA 90401 • 310.395.2663 • www.parcommercial.com

All information furnished is from sources deemed reliable and which we believe to be correct, but no representation or guarantee is given as to its accuracy and is subject to errors and omissions. All measurements are approximate and have not been verified by Broker. You are advised to conduct an independent investigation to verify all information.

PROPERTY PHOTOS



RAFAEL PADILLA
310.395.2663 x102
RAFAEL@PARCOMMERCIAL.COM
Lic# 00960188

ARTHUR PETER
310.395.2663 x101
ARTHUR@PARCOMMERCIAL.COM
Lic# 01068613



NEIGHBORHOOD HIGHLIGHTS



Johnnie's Pastrami



Tito's Tacos



F45



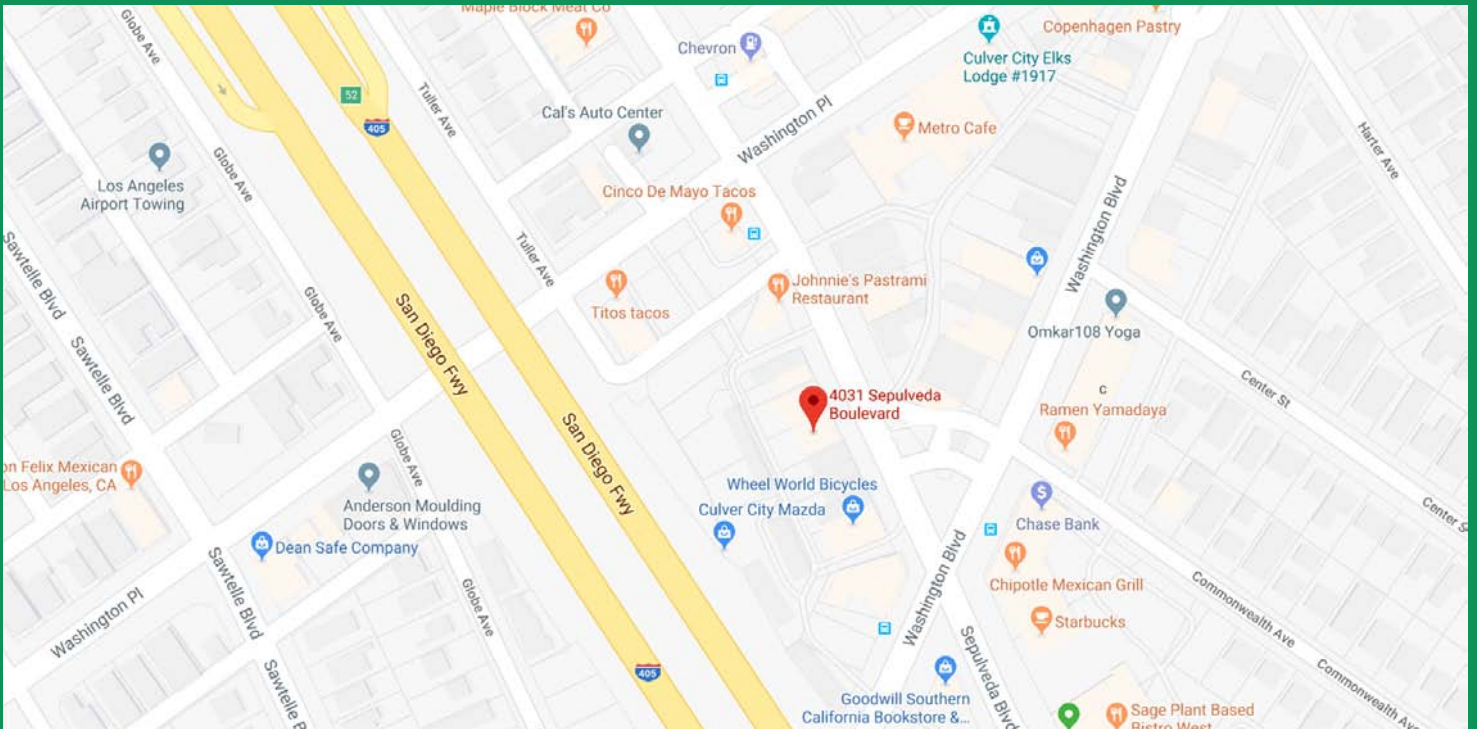
Starbucks



Travelodge



Chase Bank



RAFAEL PADILLA
310.395.2663 x102
RAFAEL@PARCOMMERCIAL.COM
Lic# 00960188

ARTHUR PETER
310.395.2663 x101
ARTHUR@PARCOMMERCIAL.COM
Lic# 01068613

