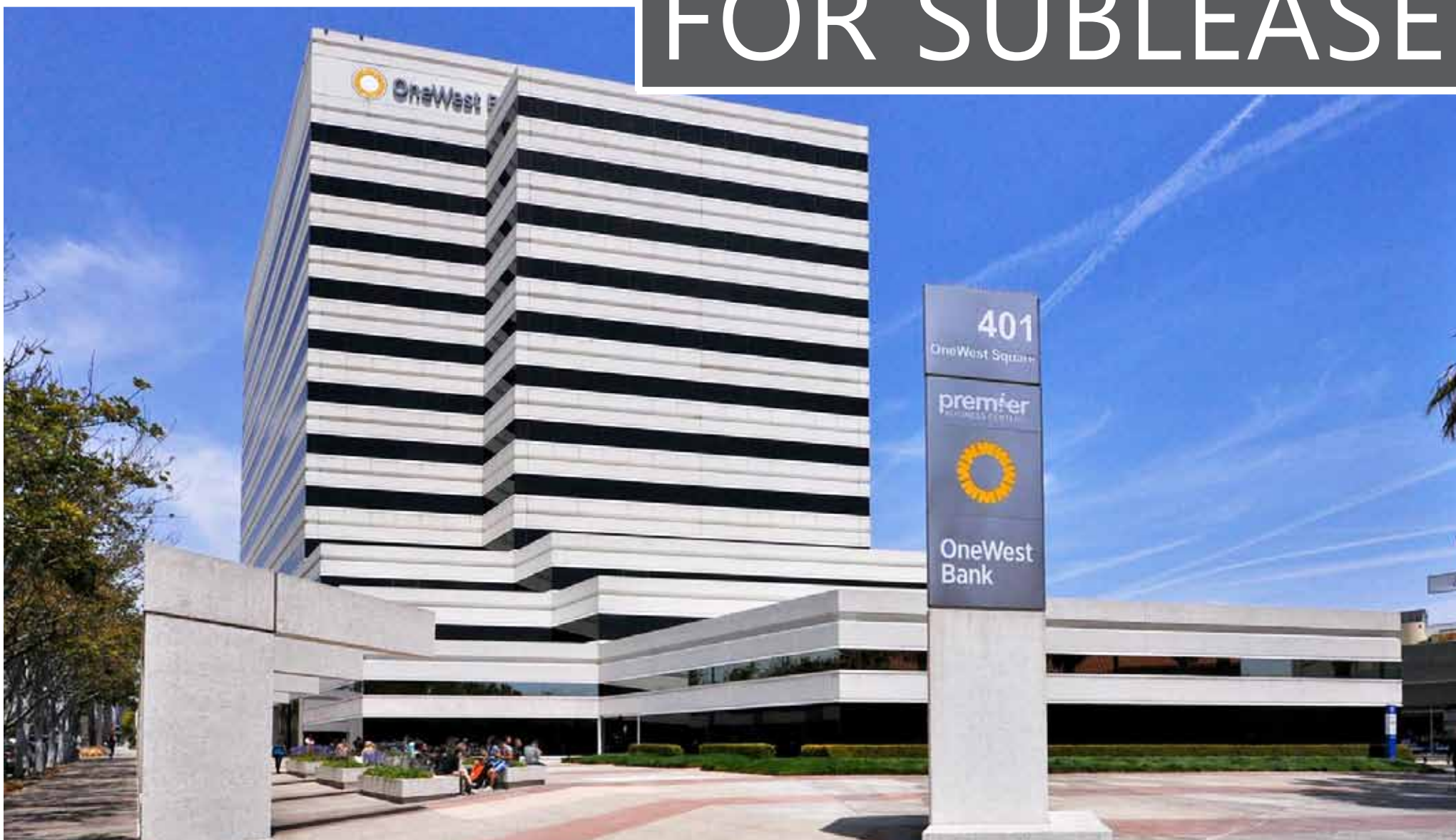


**401 Wilshire Boulevard, #1045
Santa Monica, CA 90401**

DOWNTOWN SANTA MONICA OFFICE SPACE

FOR SUBLEASE



RUDY QUINTANAR
310.395.2663 x128
RUDY@PARCOMMERCIAL.COM
Lic# 00912513

401 Wilshire Boulevard, #1045, Santa Monica, CA 90401

SIZE: Approximately 1,069 rentable square feet

RENT: \$7,250 per month, Full Service Gross

SUBLEASE TERM: Through November 30, 2020

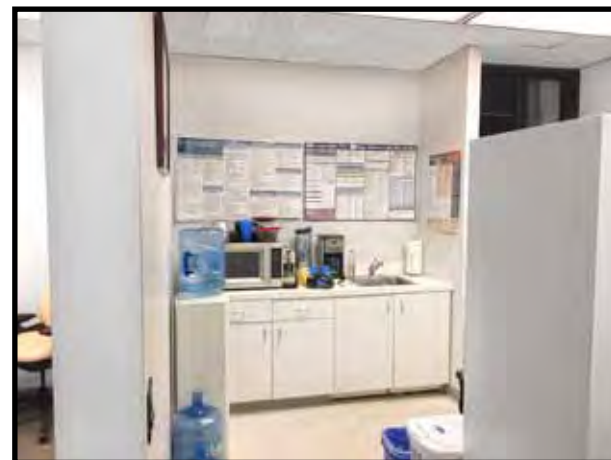
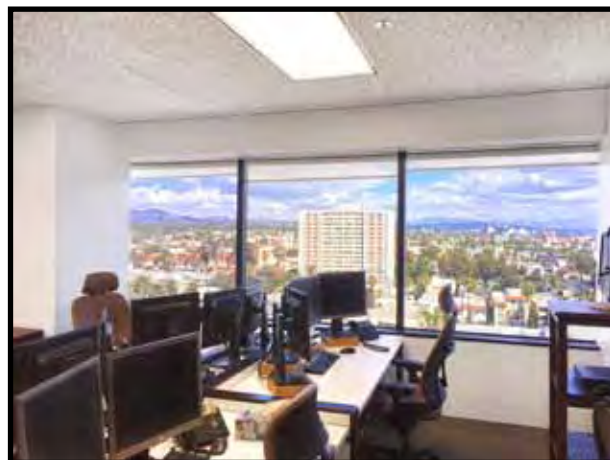
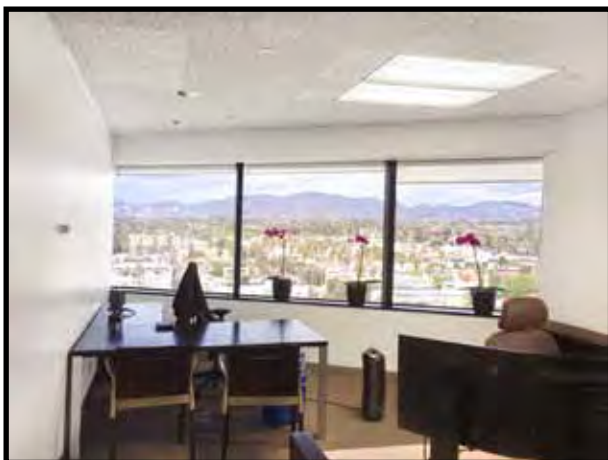
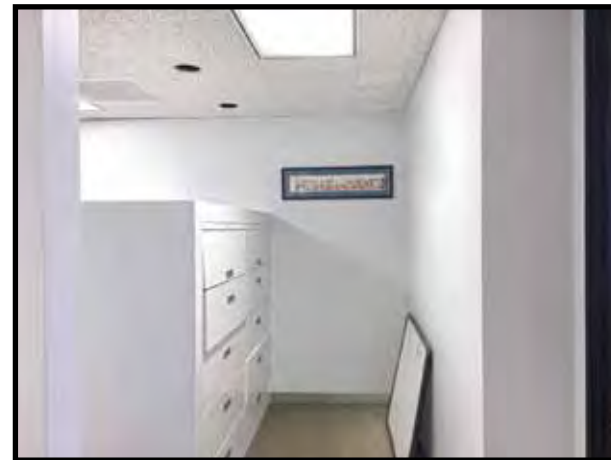
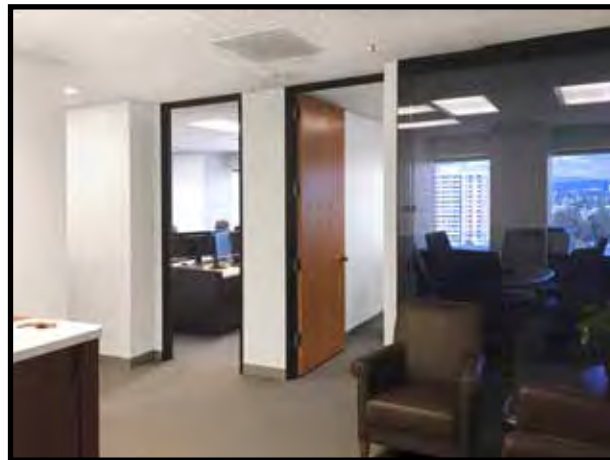
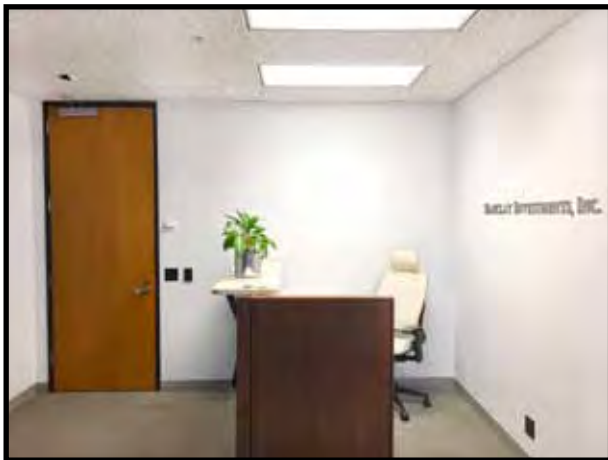
PARKING: 3 unreserved permitted spaces

AVAILABLE: Immediately

- Centrally located in the heart of downtown Santa Monica
- Close proximity to 3rd Street Promenade
- 1 private office, bullpen, kitchenette and server/storage room
- Class A building with spectacular views
- Longer term available through the landlord
- Fios Internet 75m/35m
- Close proximity to Metro Expo Line's terminus at 4th Street and Colorado



PROPERTY PHOTOS

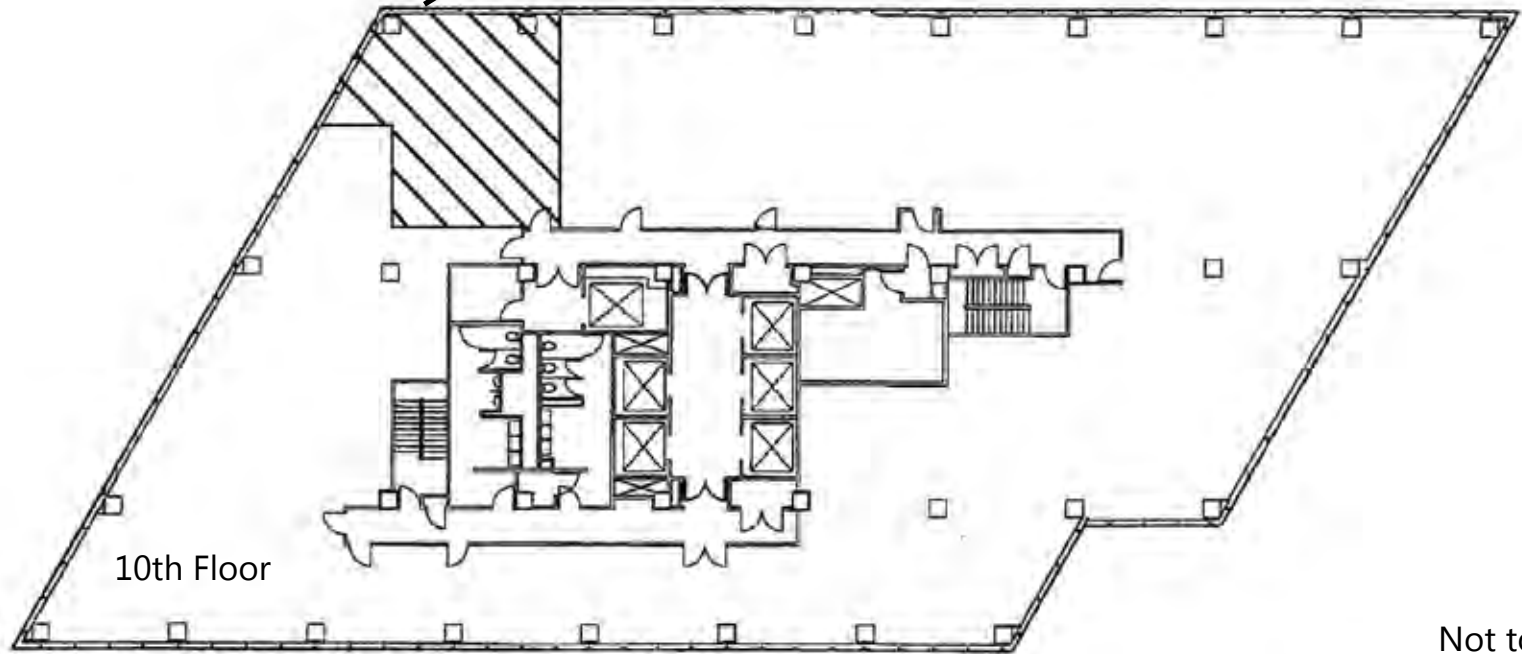
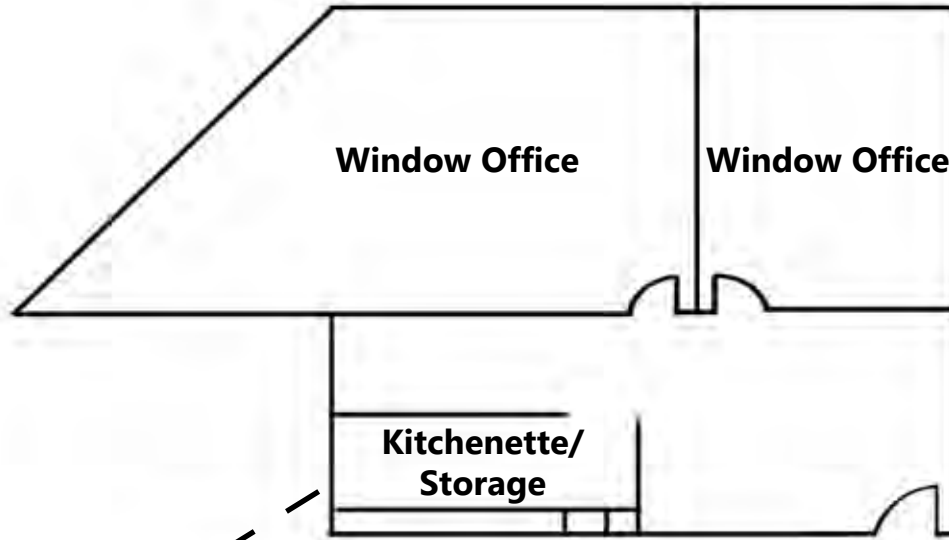


www.parcommercial.com

RUDY QUINTANAR
310.395.2663 x128
RUDY@PARCOMMERCIAL.COM
Lic# 00912513

All information furnished is from sources deemed reliable and which we believe to be correct, but no representation or guarantee is given as to its accuracy and is subject to errors and omissions. All measurements are approximate and have not been verified by Broker. You are advised to conduct an independent investigation to verify all information.

Suite 1045



Not to Scale



RUDY QUINTANAR
310.395.2663 x128
RUDY@PARCOMMERCIAL.COM
Lic# 00912513

All information furnished is from sources deemed reliable and which we believe to be correct, but no representation or guarantee is given as to its accuracy and is subject to errors and omissions. All measurements are approximate and have not been verified by Broker. You are advised to conduct an independent investigation to verify all information.

LOCAL HIGHLIGHTS



Third Street Promenade



Lowes Hotel Santa Monica



Santa Monica Place



Palisades Park



Santa Monica Pier



Hillstone Restaurant



www.parcommercial.com

RUDY QUINTANAR

310.395.2663 x128

RUDY@PARCOMMERCIAL.COM

Lic# 00912513

All information furnished is from sources deemed reliable and which we believe to be correct, but no representation or guarantee is given as to its accuracy and is subject to errors and omissions. All measurements are approximate and have not been verified by Broker. You are advised to conduct an independent investigation to verify all information.

SANTA MONICA

Downtown Santa Monica is a world-class shopping, dining and entertainment destination just a stone's throw from the Pacific Ocean. Over 6.5 million visitors a year come from around the globe to visit Santa Monica, named one of National Geographic's top ten beach cities in the world.



www.parcommercial.com

RUDY QUINTANAR
310.395.2663 x128
RUDY@PARCOMMERCIAL.COM
Lic# 00912513

All information furnished is from sources deemed reliable and which we believe to be correct, but no representation or guarantee is given as to its accuracy and is subject to errors and omissions. All measurements are approximate and have not been verified by Broker. You are advised to conduct an independent investigation to verify all information.