

1250 6TH STREET, #101
Santa Monica, CA 90401

Space for Office/Personal Trainer
FOR SUBLEASE

**A HEALTHY ALTERNATIVE TO
TRADITIONAL OFFICE BUILDINGS**

- No contact office access
- Open lobby, hallways and main stairwell provide fresh air flow



- Each suite has its own HVAC airflow system separated from the HVAC airflow of other office suites



RAFAEL PADILLA

310.395.2663 X102

RAFAEL@PARCOMMERCIAL.COM

LIC# 00960188

GREG ECKHARDT

310.395.2663 X103

GECKO@PARCOMMERCIAL.COM

LIC#01255469

1250 6TH Street, #101, Santa Monica, CA 90401

FOR LEASE: Ground Floor Office Space

SIZE: Approximately 397 total square feet

RATE: \$2,000 per month
Full Service Gross

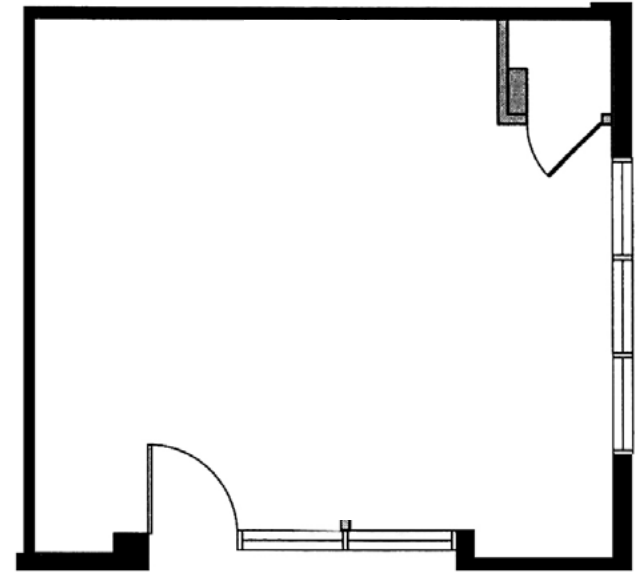
LEASE TERM: Through July 14, 2026. Longer term possible.

PARKING: 1 unreserved parking space available at building rates

AVAILABLE: Immediately

- On-site owner/manager
- Private ground floor entrance
- Open floor plan with great natural light
- Mediterranean style building combines old-world charm with modern design and technology
- Easy access to building parking
- A short walk to Third Street Promenade and Palisades Park

FLOOR PLAN



www.parcommercial.com

RAFAEL PADILLA

310.395.2663 X102

RAFAEL@PARCOMMERCIAL.COM

LIC# 00960188

GREG ECKHARDT

310.395.2663 X103

GECKO@PARCOMMERCIAL.COM

LIC#01255469



www.parcommercial.com

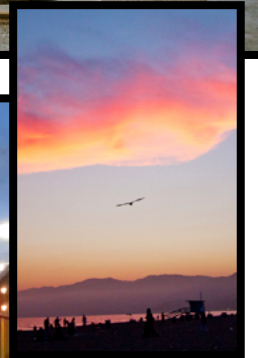
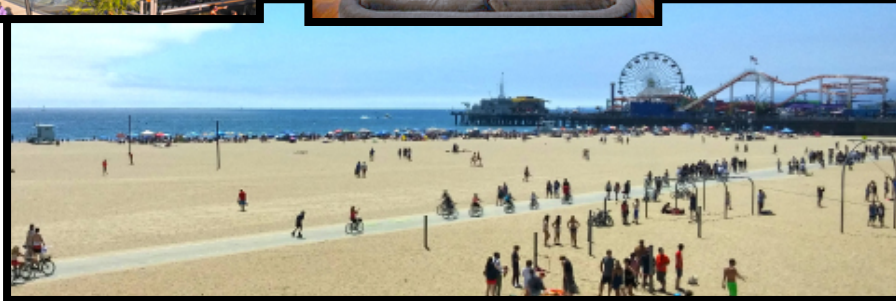
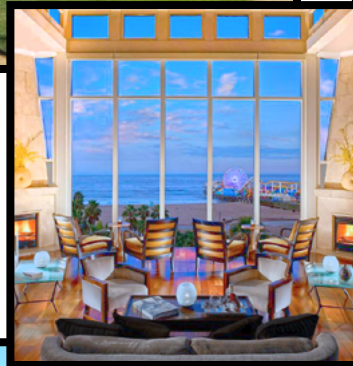
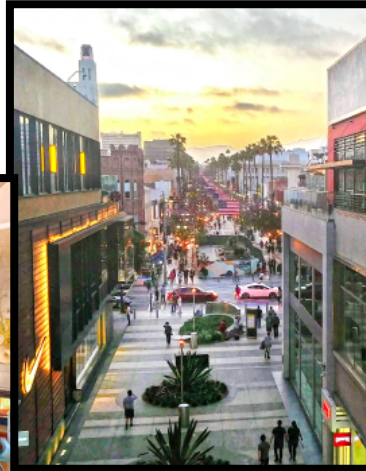
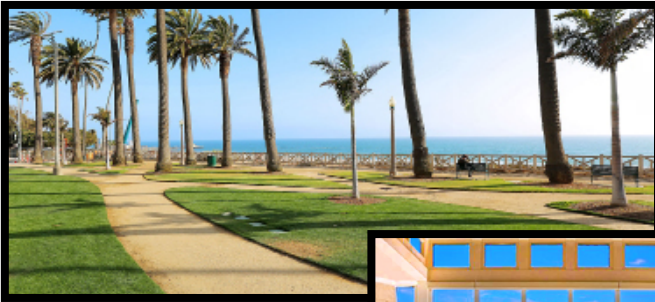
RAFAEL PADILLA
 310.395.2663 X102
RAFAEL@PARCOMMERCIAL.COM
 LIC# 00960188

GREG ECKHARDT
 310.395.2663 X103
GECKO@PARCOMMERCIAL.COM
 LIC#01255469

S
A
N
T
A

M
O
N
I
C
A

Santa Monica is a world-class shopping, dining and entertainment destination just a stone's throw from the Pacific Ocean. Over 6.5 million visitors a year come from around the globe to visit Santa Monica, named one of National Geographic's top ten beach cities in the world.



RAFAEL PADILLA

310.395.2663 X102

RAFAEL@PARCOMMERCIAL.COM

LIC# 00960188

GREG ECKHARDT

310.395.2663 X103

GECKO@PARCOMMERCIAL.COM

LIC#01255469