

GYM/RETAIL/RESTAURANT SPACE FOR LEASE



1007 WILSHIRE BOULEVARD, SANTA MONICA, CA 90401

SIZE:

Approximately 700 square feet

RATE:

\$5.35 per square foot per month, NNN
(NNN estimated to be \$0.30 per square foot per month)

PARKING:

Two (2) reserved parking spaces included

TERM:

3-5 Years

AVAILABLE WITH 30 DAY NOTICE

- Excellent window-line along Wilshire Boulevard
- Heavy traffic counts in high income area
- Neighbors include the Starbucks, El Cholo, Rustic Canyon, Santa Monica Seafood and Huckleberry Cafe
- Located near Downtown Santa Monica
- Occupied by a pilates studio

*** OUTDOOR AREA AVAILABLE**

ARTHUR PETER
310.395.2663 X101
ARTHUR@PARCOMMERCIAL.COM
Lic# 010686613

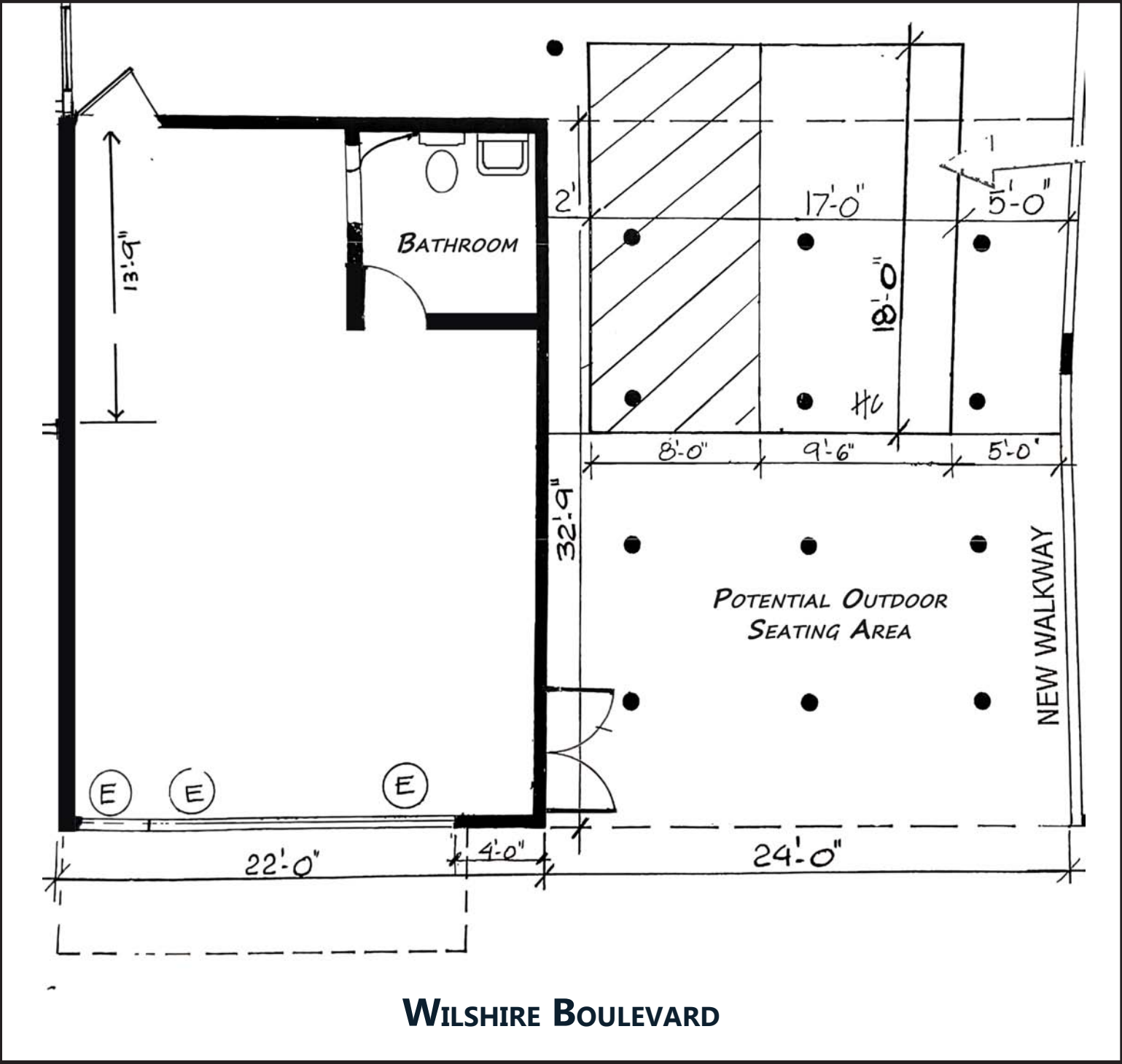
RAFAEL PADILLA
310.395.2663 x102
RAFAEL@PARCOMMERCIAL.COM
Lic# 00960188



1250 6th St., #303, Santa Monica, CA 90401 • 310.395.2663 • www.parcommercial.com

All information furnished is from sources deemed reliable and which we believe to be correct, but no representation or guarantee is given as to its accuracy and is subject to errors and omissions. All measurements are approximate and have not been verified by Broker. You are advised to conduct an independent investigation to verify all information.

FLOOR PLAN



ARTHUR PETER
 310.395.2663 X101
 ARTHUR@PARCOMMERCIAL.COM
 Lic# 010686613

RAFAEL PADILLA
 310.395.2663 x102
 RAFAEL@PARCOMMERCIAL.COM
 Lic# 00960188



NEIGHBORHOOD HIGHLIGHTS

Santa Monica is a world-class shopping, dining and entertainment destination just a stone's throw from the Pacific Ocean. Over 6.5 million visitors a year come from around the globe to visit Santa Monica, named one of National Geographic's top ten beach cities in the world.



ARTHUR PETER
310.395.2663 X101
ARTHUR@PARCOMMERCIAL.COM
Lic# 010686613

RAFAEL PADILLA
310.395.2663 x102
RAFAEL@PARCOMMERCIAL.COM
Lic# 00960188

