

**723 BROADWAY**  
Santa Monica, CA 90401

**MASSAGE/SPA/MEDICAL SPACE LOCATED  
IN DOWNTOWN SANTA MONICA**



**FOR LEASE**



**RAFAEL PADILLA**  
310.395.2663 X102  
RAFAEL@PARCOMMERCIAL.COM  
LIC# 00960188

**ARTHUR PETER**  
310.395.2663 X101  
ARTHUR@PARCOMMERCIAL.COM  
LIC# 00960188

# 723 Broadway, Santa Monica, CA 90401

**SIZE:** Approximately 1,000 square feet

**RATE:** \$3,000 per month, NNN (NNN estimated to be \$1,350 per month)

**AVAILABLE:** Immediately

**PARKING:** Street parking

**TERM:** 3 - 5 years (negotiable)

- Ideal for massage, day spa, urgent care, chiropractor, general retail, etc.
- Buildout is 4 treatment rooms, 1 office, restroom & receptionist lobby
- High income area with foot traffic and strong demographics
- Walking distance to the world famous Third Street Promenade, Santa Monica Place and one block from the metro expo line's terminus at 4th Street & Colorado
- Located on the NW corner of Lincoln and Broadway in the heart of Santa Monica, close to great restaurants, shopping and a new Target opening in 2020
- High ceiling, air conditioned, ADA bathroom



**RAFAEL PADILLA**

310.395.2663 X102

RAFAEL@PARCOMMERCIAL.COM

LIC# 00960188

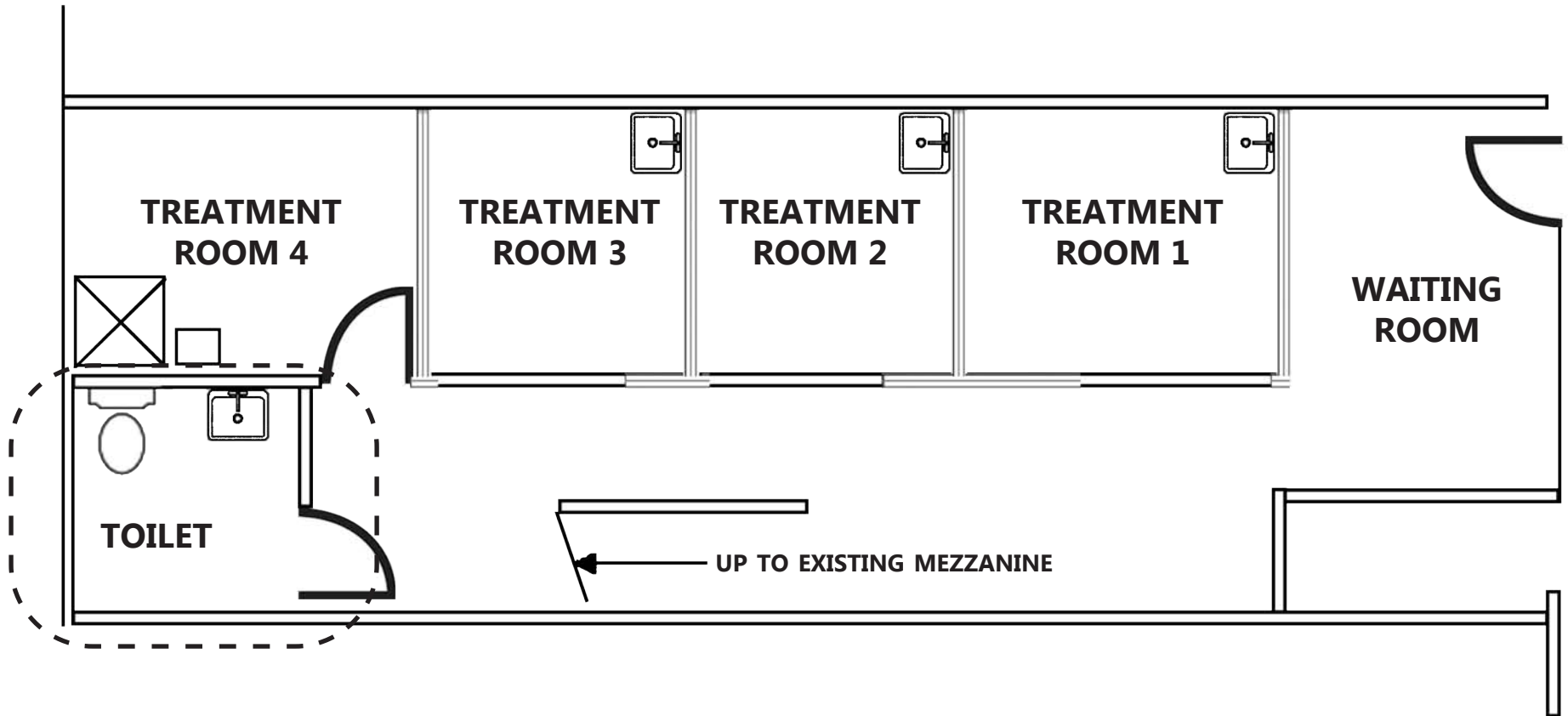
**ARTHUR PETER**

310.395.2663 X101

ARTHUR@PARCOMMERCIAL.COM

LIC# 00960188

**F  
L  
O  
O  
R  
P  
L  
A  
N**



[www.parcommercial.com](http://www.parcommercial.com)

**RAFAEL PADILLA**

**310.395.2663 X102**

**RAFAEL@PARCOMMERCIAL.COM**

**LIC# 00960188**

**ARTHUR PETER**

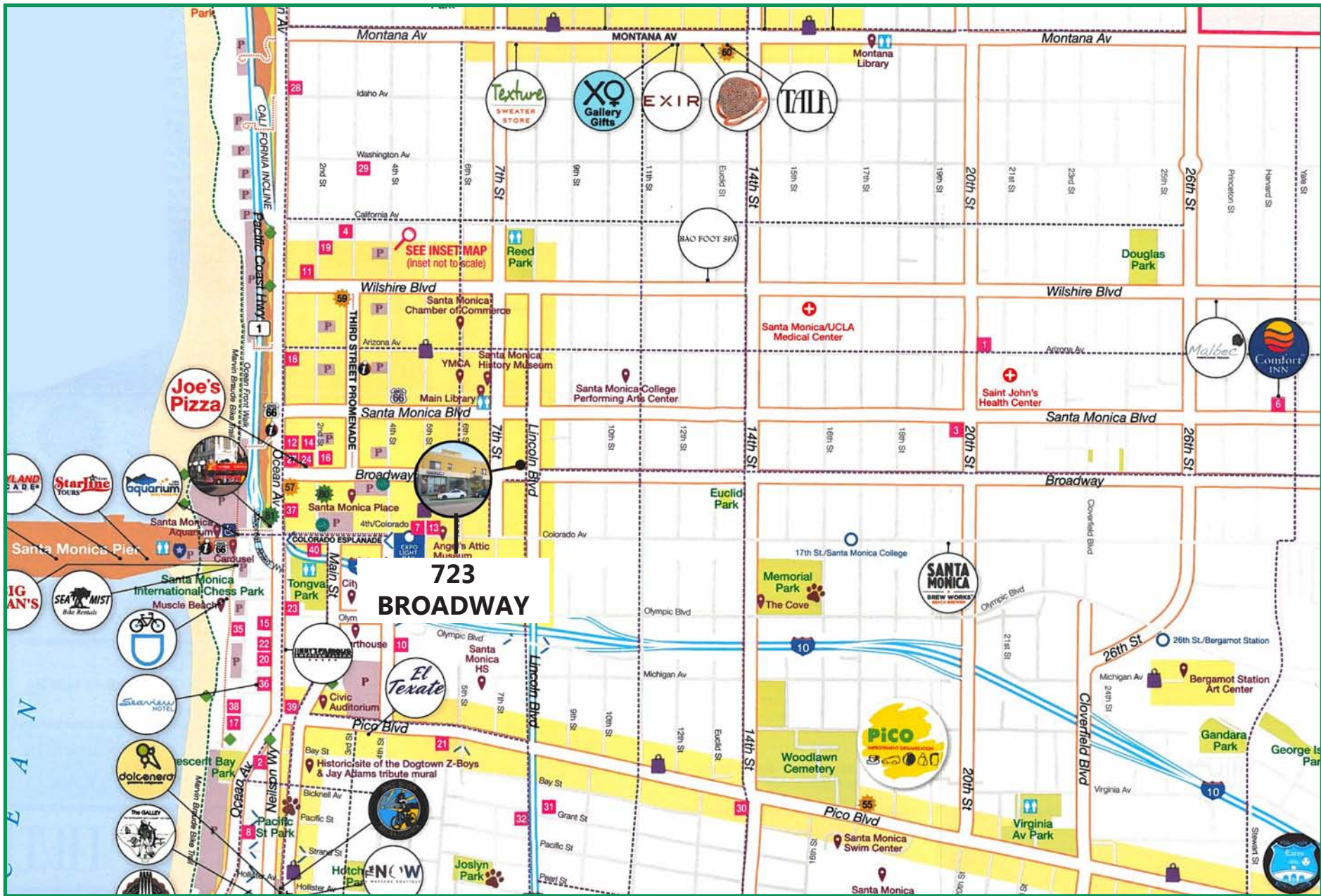
**310.395.2663 X101**

**ARTHUR@PARCOMMERCIAL.COM**

**LIC# 00960188**

All information furnished is from sources deemed reliable and which we believe to be correct, but no representation or guarantee is given as to its accuracy and is subject to errors and omissions. All measurements are approximate and have not been verified by Broker. You are advised to conduct an independent investigation to verify all information.

AREA  
MAP



www.parcommercial.com

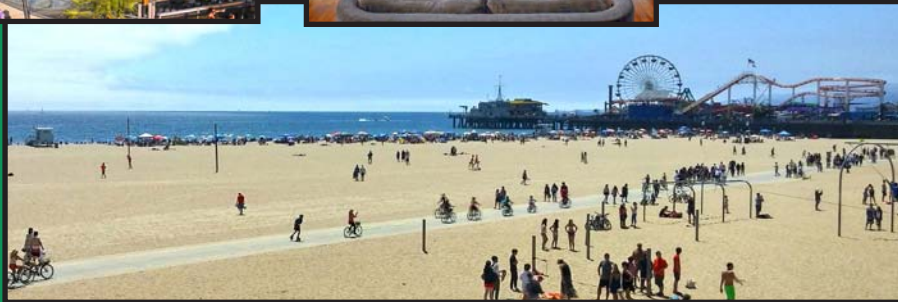
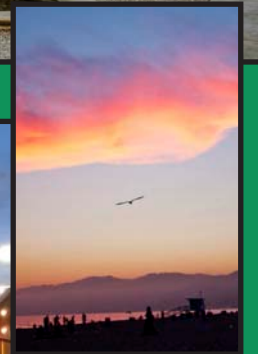
**RAFAEL PADILLA**  
 310.395.2663 X102  
 RAFAEL@PARCOMMERCIAL.COM  
 LIC# 00960188

**ARTHUR PETER**  
 310.395.2663 X101  
 ARTHUR@PARCOMMERCIAL.COM  
 LIC# 00960188

All information furnished is from sources deemed reliable and which we believe to be correct, but no representation or guarantee is given as to its accuracy and is subject to errors and omissions. All measurements are approximate and have not been verified by Broker. You are advised to conduct an independent investigation to verify all information.

LOCAL HIGHLIGHTS

Santa Monica is a world-class shopping, dining and entertainment destination just a stone's throw from the Pacific Ocean. Over 6.5 million visitors a year come from around the globe to visit Santa Monica, named one of National Geographic's top ten beach cities in the world.



www.parcommercial.com

**RAFAEL PADILLA**

310.395.2663 X102

RAFAEL@PARCOMMERCIAL.COM

LIC# 00960188

**ARTHUR PETER**

310.395.2663 X101

ARTHUR@PARCOMMERCIAL.COM

LIC# 00960188

All information furnished is from sources deemed reliable and which we believe to be correct, but no representation or guarantee is given as to its accuracy and is subject to errors and omissions. All measurements are approximate and have not been verified by Broker. You are advised to conduct an independent investigation to verify all information.