



CREATIVE OFFICE SPACE FOR LEASE



3402 MOTOR AVENUE, SUITE B, LOS ANGELES, CA 90034

SIZE: Approximately 2,150 square feet

RATE: \$2.50 per square foot per month, MG
(Net of electrical & janitorial)

PARKING: 4 parking spaces at \$85 per space per month (additional spaces available in neighboring lot)

TERM: Negotiable

AVAILABLE: February 2021

- Three private offices and a large conference room
- High ceilings with clearstory skylights
- Private restroom, kitchenette and HVAC
- CAT 5 wired + free security alarm included
- Adjacent to newly re-developed Woodbine Park
- Numerous amenities within walking distance
- Near I-10 & 405 freeways

ARTHUR PETER

310.395.2663 x101

ARTHUR@PARCOMMERCIAL.COM

Lic# 01068613

RAFAEL PADILLA

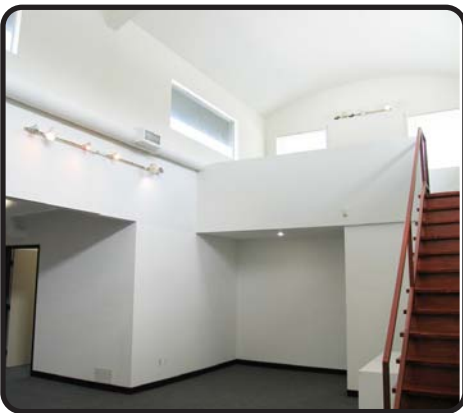
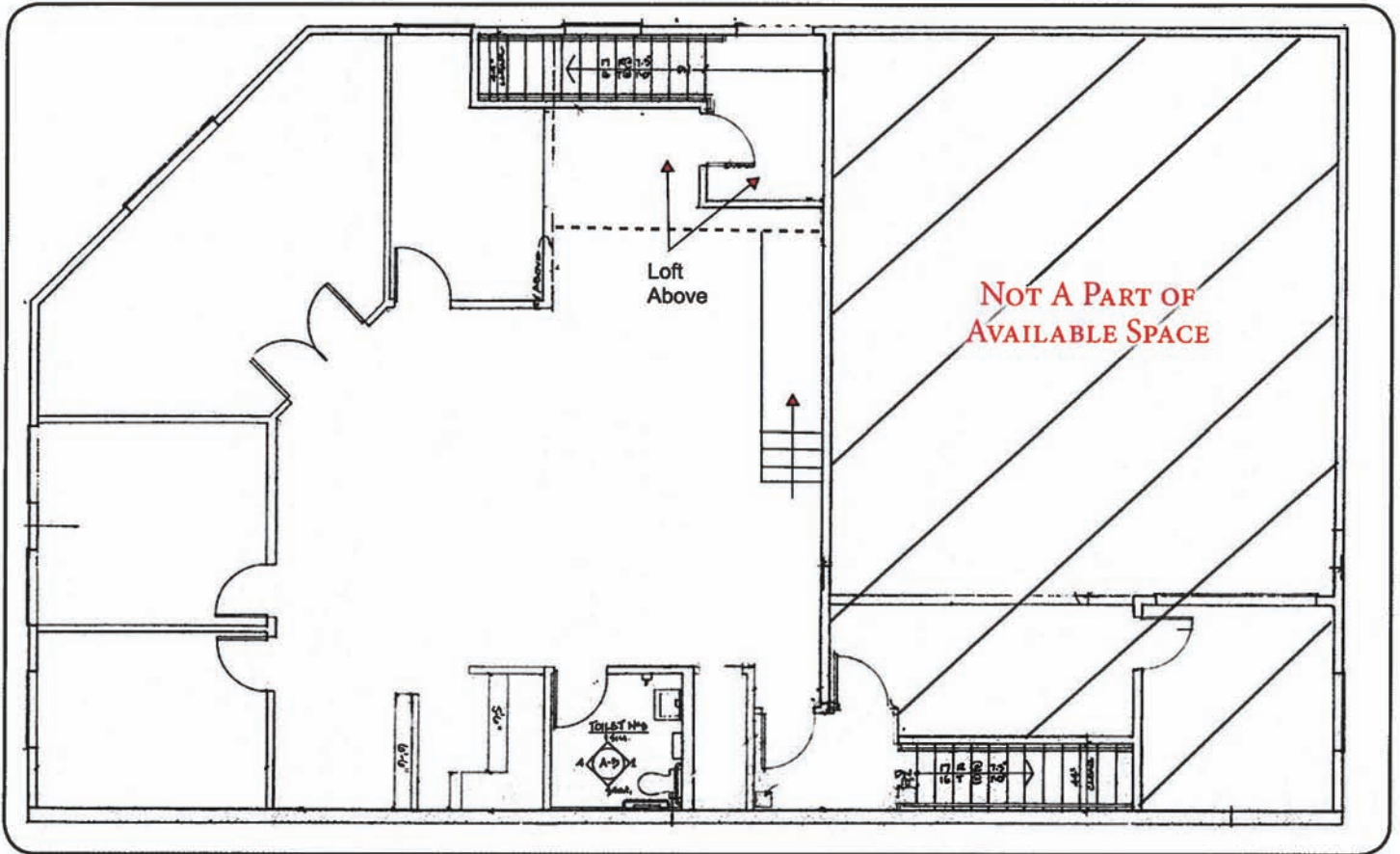
310.395.2663 x102

RAFAEL@PARCOMMERCIAL.COM

Lic# 00960188

1250 6th St., #303, Santa Monica, CA 90401 • 310.395.2663 • www.parcommercial.com

FLOOR PLAN & PHOTOS



ARTHUR PETER
310.395.2663 x101
ARTHUR@PARCOMMERCIAL.COM
Lic# 01068613

RAFAEL PADILLA
310.395.2663 x102
RAFAEL@PARCOMMERCIAL.COM
Lic# 00960188

