

11674 GATEWAY BOULEVARD • Los Angeles, CA 90064

BARRINGTON GATEWAY CENTER



**SECOND FLOOR OFFICE SPACE
FOR LEASE**



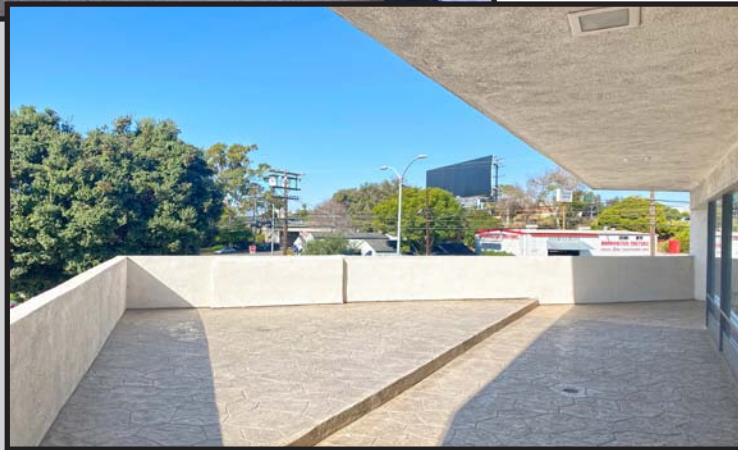
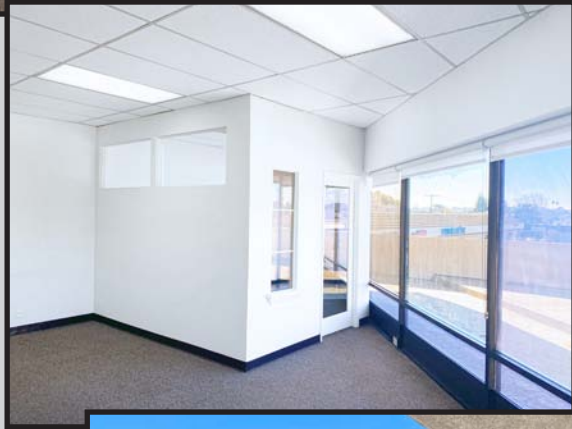
RAFAEL PADILLA
310.395.2663 X102

RAFAEL@PARCOMMERCIAL.COM
LIC# 00960188

ARTHUR PETER
310.395.2663 X101

ARTHUR@PARCOMMERCIAL.COM
LIC# 01068613

PROPERTY CHARACTERISTICS



11674 GATEWAY BOULEVARD LOS ANGELES, CA 90064

SIZE: Approximately 793 square feet

RATE: \$2.95 per square foot per month, Modified Gross
(Net of electric and janitorial)

TERM: 3 - 5 years

PARKING: Surface parking for clients & street parking for employees

AVAILABLE: Immediately

- 2 offices, storage and open work area
- Many onsite restaurants and services
- Open air stairwell and hallway
- Excellent location with great access
- Individually air conditioned
- Located on the southeast corner of Barrington Avenue and Gateway Boulevard blocks from the 405 and 10 fwy in West Los Angeles



www.parcommercial.com

RAFAEL PADILLA
310.395.2663 X102

RAFAEL@PARCOMMERCIAL.COM
LIC# 00960188

ARTHUR PETER
310.395.2663 X101

ARTHUR@PARCOMMERCIAL.COM
LIC# 01068613

All information furnished is from sources deemed reliable and which we believe to be correct, but no representation or guarantee is given as to its accuracy and is subject to errors and omissions. All measurements are approximate and have not been verified by Broker. You are advised to conduct an independent investigation to verify all information.

AERIAL PHOTO



www.parcommercial.com

RAFAEL PADILLA

310.395.2663 X102

RAFAEL@PARCOMMERCIAL.COM

LIC# 00960188

ARTHUR PETER

310.395.2663 X101

ARTHUR@PARCOMMERCIAL.COM

LIC# 01068613

All information furnished is from sources deemed reliable and which we believe to be correct, but no representation or guarantee is given as to its accuracy and is subject to errors and omissions. All measurements are approximate and have not been verified by Broker. You are advised to conduct an independent investigation to verify all information.