

2nd Generation Restaurant Space

FOR LEASE



418 WILSHIRE BOULEVARD • Santa Monica, CA 90401



ARTHUR PETER
310.395.2663 X101

ARTHUR@PARCOMMERCIAL.COM
LIC# 010686613

RAFAEL PADILLA
310.395.2663 X102

RAFAEL@PARCOMMERCIAL.COM
LIC# 00960188

JOHN MOUDAKIS
310.395.2663 x116

JOHNM@PARCOMMERCIAL.COM
LIC# 01833441

SIZE: Approximately 2,700 rentable square feet

RATE: \$6.25 per square foot per month, NNN (NNN estimated to be \$0.75 per square foot per month)

PARKING: Steps away from two public parking structures

AVAILABLE: Immediately

PLEASE DO NOT DISTURB EXISTING TENANT

- **Outdoor covered patio area**
- **2nd generation restaurant space**
- **Furniture and equipment available**
- **CUP in place for beer and wine license**
- **Steps from Third Street Promenade and the beach**
- **Dense trade area with significant retail, office and mixed-use developments nearby**
- **Ceiling height is 16 feet and up to 20 feet including the space above the currently exposed rafters**



PAR
COMMERCIAL BROKERAGE

www.parcommercial.com

ARTHUR PETER
310.395.2663 X101

ARTHUR@PARCOMMERCIAL.COM
LIC# 010686613

RAFAEL PADILLA
310.395.2663 X102

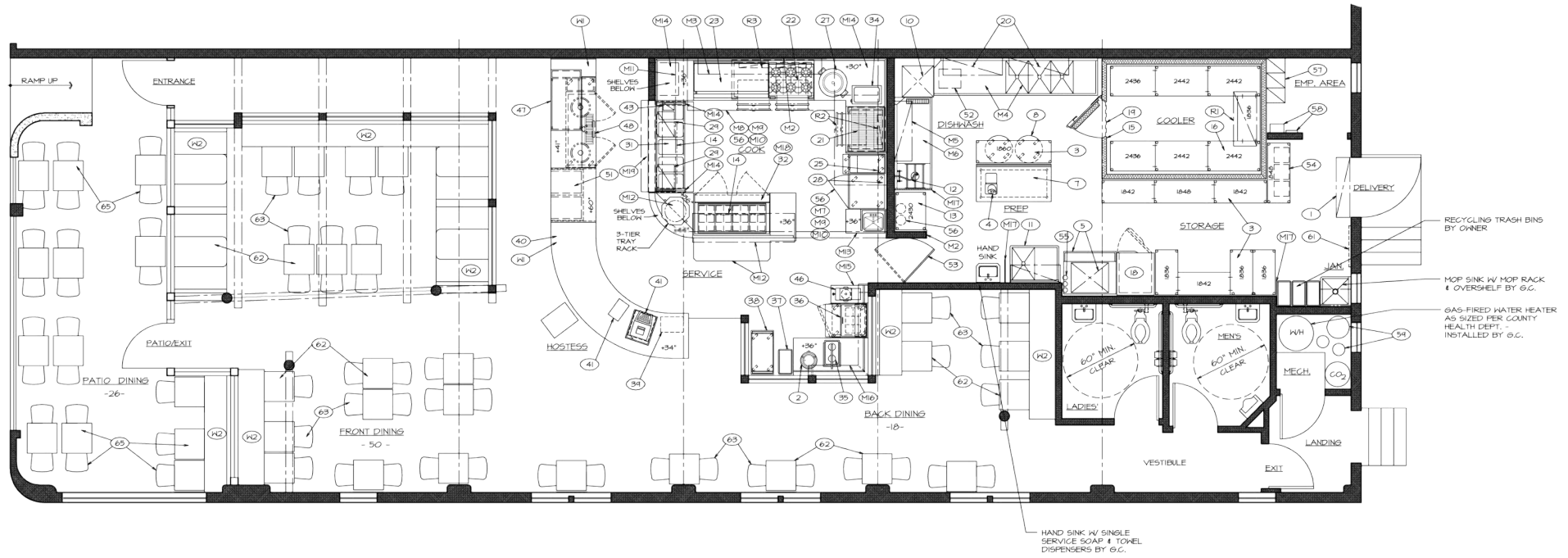
RAFAEL@PARCOMMERCIAL.COM
LIC# 00960188

JOHN MOUDAKIS
310.395.2663 x116

JOHNM@PARCOMMERCIAL.COM
LIC# 01833441

All information furnished is from sources deemed reliable and which we believe to be correct, but no representation or guarantee is given as to its accuracy and is subject to errors and omissions. All measurements are approximate and have not been verified by Broker. You are advised to conduct an independent investigation to verify all information.

Wilshire Blvd.



G.C. TO POST THE FOLLOWING SIGN IN CONSPICUOUS LOCATION:

4th Ct.



PAR
COMMERCIAL BROKERAGE

www.parcommercial.com

ARTHUR PETER
310.395.2663 X101

ARTHUR@PARCOMMERCIAL.COM
LIC# 010686613

RAFAEL PADILLA
310.395.2663 X102

RAFAEL@PARCOMMERCIAL.COM
LIC# 00960188

JOHN MOUDAKIS
310.395.2663 x116

JOHNM@PARCOMMERCIAL.COM
LIC# 01833441

All information furnished is from sources deemed reliable and which we believe to be correct, but no representation or guarantee is given as to its accuracy and is subject to errors and omissions. All measurements are approximate and have not been verified by Broker. You are advised to conduct an independent investigation to verify all information.



PAR
COMMERCIAL BROKERAGE

www.parcommercial.com

ARTHUR PETER
310.395.2663 X101

ARTHUR@PARCOMMERCIAL.COM
LIC# 010686613

RAFAEL PADILLA
310.395.2663 X102

RAFAEL@PARCOMMERCIAL.COM
LIC# 00960188

JOHN MOUDAKIS
310.395.2663 x116

JOHNM@PARCOMMERCIAL.COM
LIC# 01833441

All information furnished is from sources deemed reliable and which we believe to be correct, but no representation or guarantee is given as to its accuracy and is subject to errors and omissions. All measurements are approximate and have not been verified by Broker. You are advised to conduct an independent investigation to verify all information.



CAFES/RESTAURANTS

- 1 Fig
- 2 800 Degrees
- 3 Hillstone
- 4 Wally's Wine
- 5 California Pizza Kitchen

- 6 Panini Kabob Grill
- 7 1212 Santa Monica
- 8 Lemonade
- 9 Locanda Del Lago
- 10 Tender Greens
- 11 Uovo

- 12 HiHo Burger
- 13 Cava
- 14 Sugarfish
- 15 The Misfit
- 16 Barney's Beanery
- 17 BOA Steakhouse

- 18 Water Grill
- 19 The Veranda
- 20 Thai Dishes
- 21 KazuNori
- 22 Meat on Ocean
- 23 Del Frisco's

- 24 True Food
- 25 Bruxie
- 26 BIBIBOP

SHOPPING

- 27 Banana Republic
- 28 J. Crew
- 29 Old Navy
- 30 Sephora
- 31 Max Studio
- 32 Flight 23
- 33 Victoria Secret
- 34 Sunglass Hut
- 35 Zara
- 36 Madewell
- 37 The Body Shop
- 38 Lululemon
- 39 Anthropologie
- 40 LUSH
- 41 Papyrus
- 42 Nordstrom
- 43 Santa Monica Place

ARTS & ENTERTAINMENT

- 44 Arclight Cinemas
- 45 AMC Broadway 4
- 46 AMC Santa Monica 7

HOTELS

- 47 Fairmont Miramar
- 48 The Huntly
- 49 Shore Hotel
- 50 Wyndham
- 51 Ocean View Hotel
- 52 Georgian Hotel
- 53 Hotel Carmel
- 54 Shangri-La
- 55 Loews

SPAS/BEAUTY

- 56 Exhale LA
- 57 Massage Co
- 58 Ocean Oasis
- 59 Skin Med Spa
- 60 Burke Williams
- 61 Tikkun Holistic
- 62 Lloyd's Barbershop
- 63 Glam&Go
- 64 Salon Republic
- 65 Saulino Smith
- 66 Drybar
- 67 Brambila Salon
- 68 Carlton Hair

BANKS

- 69 Bank of America
- 70 OneWest Bank
- 71 Chase Bank
- 72 Wells Fargo
- 73 U.S. Bank
- 74 Citibank
- 75 Union Bank

FITNESS

- 76 Burn Fitness
- 77 SoulCycle
- 78 Pure Barre
- 79 Pilates Platinum
- 80 Equinox
- 81 Yogaco
- 82 24 Hour Fitness
- 83 Orangetheory
- 84 Hot 8 Yoga
- 85 Cycle House



PAR
COMMERCIAL BROKERAGE

www.parcommercial.com

ARTHUR PETER

310.395.2663 X101

ARTHUR@PARCOMMERCIAL.COM

LIC# 010686613

RAFAEL PADILLA

310.395.2663 X102

RAFAEL@PARCOMMERCIAL.COM

LIC# 00960188

JOHN MOUDAKIS

310.395.2663 x116

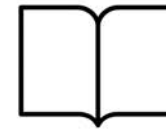
JOHNM@PARCOMMERCIAL.COM

LIC# 01833441

All information furnished is from sources deemed reliable and which we believe to be correct, but no representation or guarantee is given as to its accuracy and is subject to errors and omissions. All measurements are approximate and have not been verified by Broker. You are advised to conduct an independent investigation to verify all information.



Housing Units
21,605
20.21% owner occupied



Educational Attainment
65%
with college or higher degree



Estimated Population
42,069
6.62% growth 2010-2019
1.75% growth 2019-2024



Average Household Income
\$110,509
44% earn more than \$100k



Median Home Value
\$977,836



Apparel, Food/Entertainment & Services
\$586,816
2019 yearly consumer spending

POPULATION

	1-MILE RADIUS	3-MILE RADIUS	5-MILE RADIUS
2024 Projected Population	42,805	238,586	491,003
2019 Estimated Population	42,069	233,277	481,566
2010 Census Population	39,456	212,274	445,885
Growth 2019-2024	1.75%	2.28%	1.96%
Growth 2010-2019	6.62%	9.89%	8.00%

2019 ESTIMATED HOUSEHOLD INCOME \$50,000 +

\$50,000-\$74,999	2.59%	12.63%	13.21%
\$75,000-\$99,000	11.94%	11.19%	11.44%
\$100,000 +	43.23%	47.06%	45.65%

TOTAL	57.76%	70.88%	70.30%
2019 Estimated Average HH Income	\$110,509	\$124,995	\$122,775
2019 Estimated Households	21,605	115,016	225,092



PAR
COMMERCIAL BROKERAGE

www.parcommercial.com

ARTHUR PETER
310.395.2663 X101

ARTHUR@PARCOMMERCIAL.COM
LIC# 010686613

RAFAEL PADILLA
310.395.2663 X102

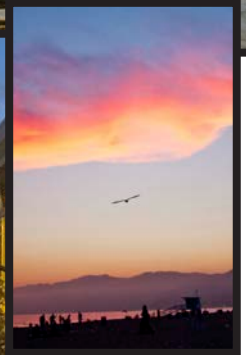
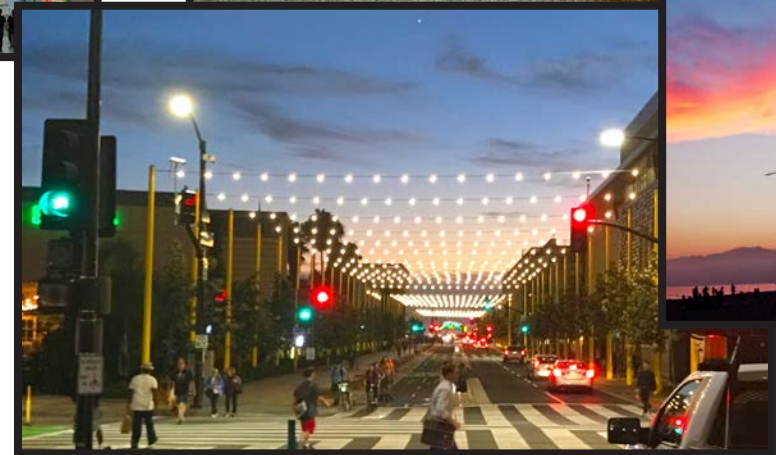
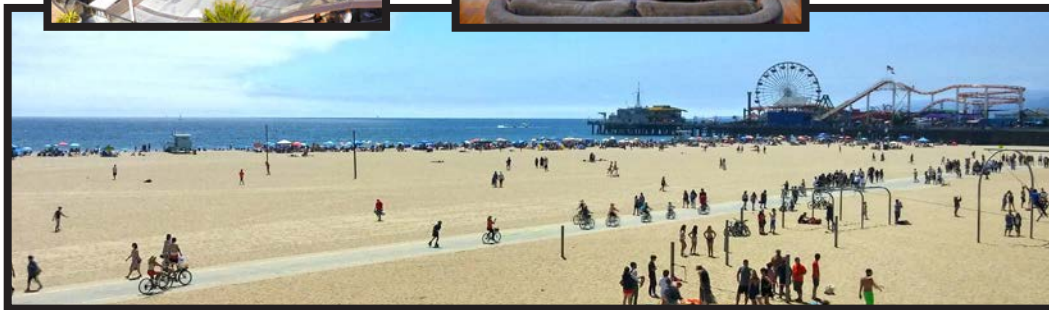
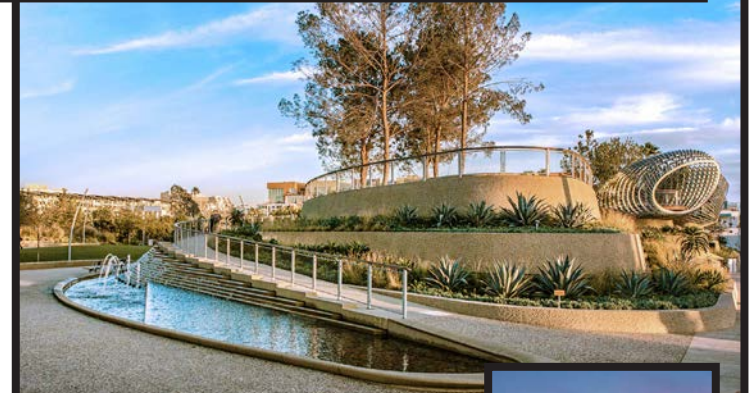
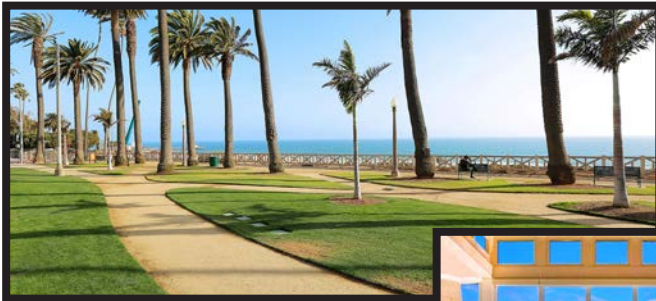
RAFAEL@PARCOMMERCIAL.COM
LIC# 00960188

JOHN MOUDAKIS
310.395.2663 x116

JOHNM@PARCOMMERCIAL.COM
LIC# 01833441

All information furnished is from sources deemed reliable and which we believe to be correct, but no representation or guarantee is given as to its accuracy and is subject to errors and omissions. All measurements are approximate and have not been verified by Broker. You are advised to conduct an independent investigation to verify all information.

Santa Monica is a world-class shopping, dining and entertainment destination just a stone's throw from the Pacific Ocean. Over 6.5 million visitors a year come from around the globe to visit Santa Monica, named one of National Geographic's top ten beach cities in the world.



PAR
COMMERCIAL BROKERAGE

www.parcommercial.com

ARTHUR PETER
310.395.2663 X101

ARTHUR@PARCOMMERCIAL.COM
LIC# 010686613

RAFAEL PADILLA
310.395.2663 X102

RAFAEL@PARCOMMERCIAL.COM
LIC# 00960188

JOHN MOUDAKIS
310.395.2663 x116

JOHNM@PARCOMMERCIAL.COM
LIC# 01833441

All information furnished is from sources deemed reliable and which we believe to be correct, but no representation or guarantee is given as to its accuracy and is subject to errors and omissions. All measurements are approximate and have not been verified by Broker. You are advised to conduct an independent investigation to verify all information.