

135 S. BARRINGTON PLACE, LOS ANGELES, CA 90049

FOR  
SUB  
LEASE



**AVAILABLE:** 12 chairs; one or more chairs may be rented

**RENT:** \$400 per chair per week

**PARKING:** Ample metered street and public parking 1 block away

- Bright and cheery space
- Upscale Brentwood neighborhood
- High ceilings with floor to ceiling storefront
- High traffic count and visibility
- Completely set up and ready for operating
- Close proximity to the 405 via Sunset Blvd
- Near many fine restaurants, shopping & banks



**PAR**  
COMMERCIAL BROKERAGE

**RUDY QUINTANAR**

**310.395.2663 x128 • RUDY@PARCOMMERCIAL.COM**

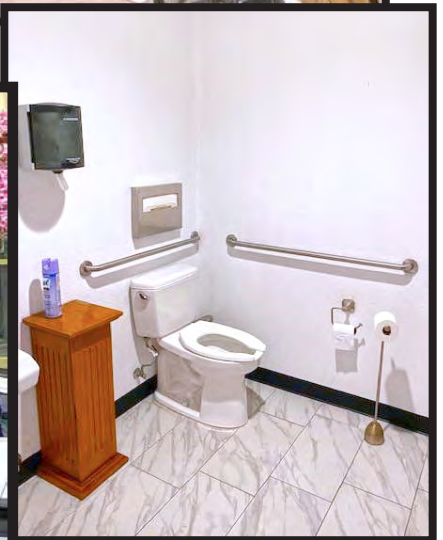
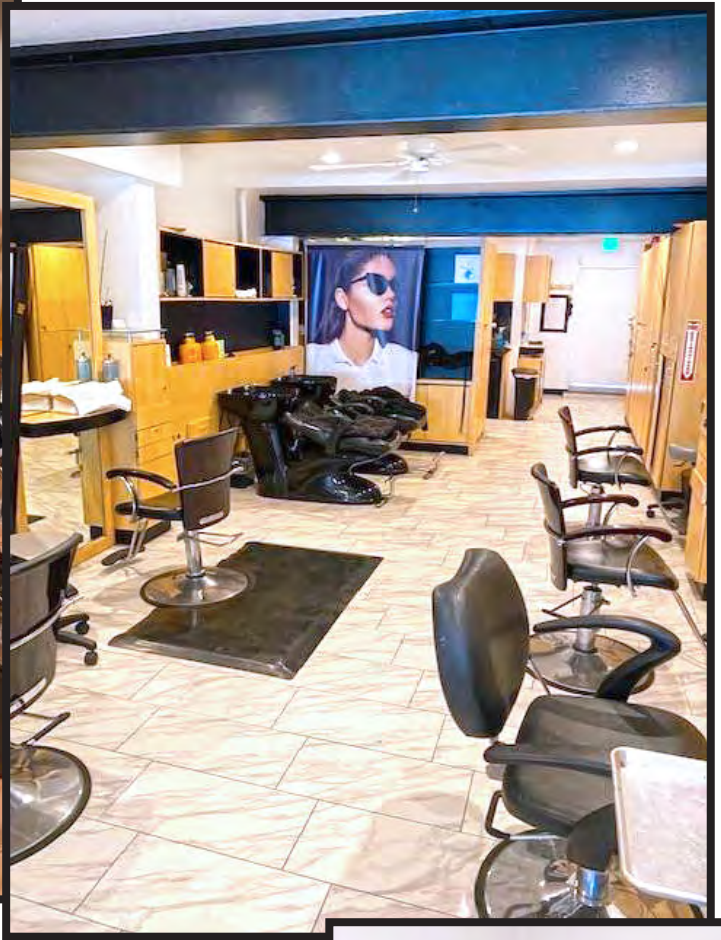
**Lic# 0091251**

1250 6th St., #303, Santa Monica, CA 90401 • 310.395.2663 • [www.parcommercial.com](http://www.parcommercial.com)

All information furnished is from sources deemed reliable and which we believe to be correct, but no representation or guarantee is given as to its accuracy and is subject to errors and omissions. All measurements are approximate and have not been verified by Broker. You are advised to conduct an independent investigation to verify all information.

# PROPERTY PHOTOS

135 S. BARRINGTON PLACE  
LOS ANGELES, CA 90049



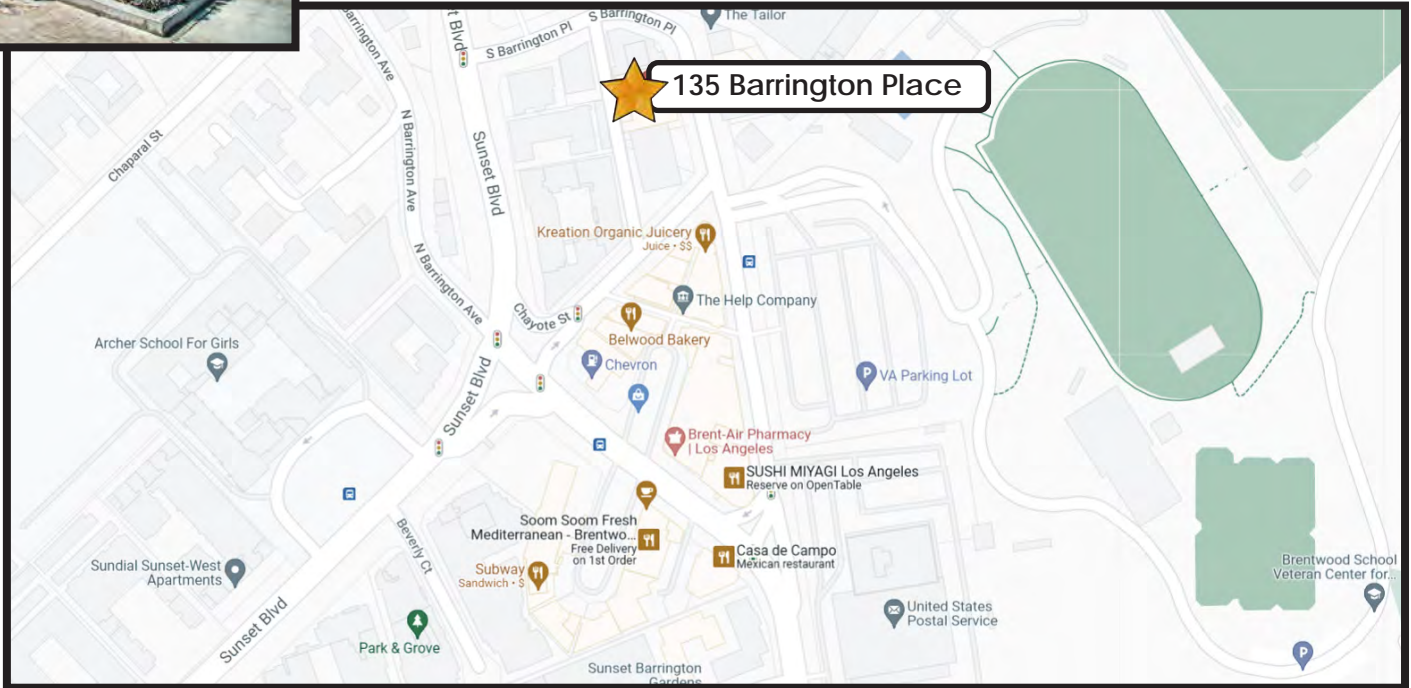
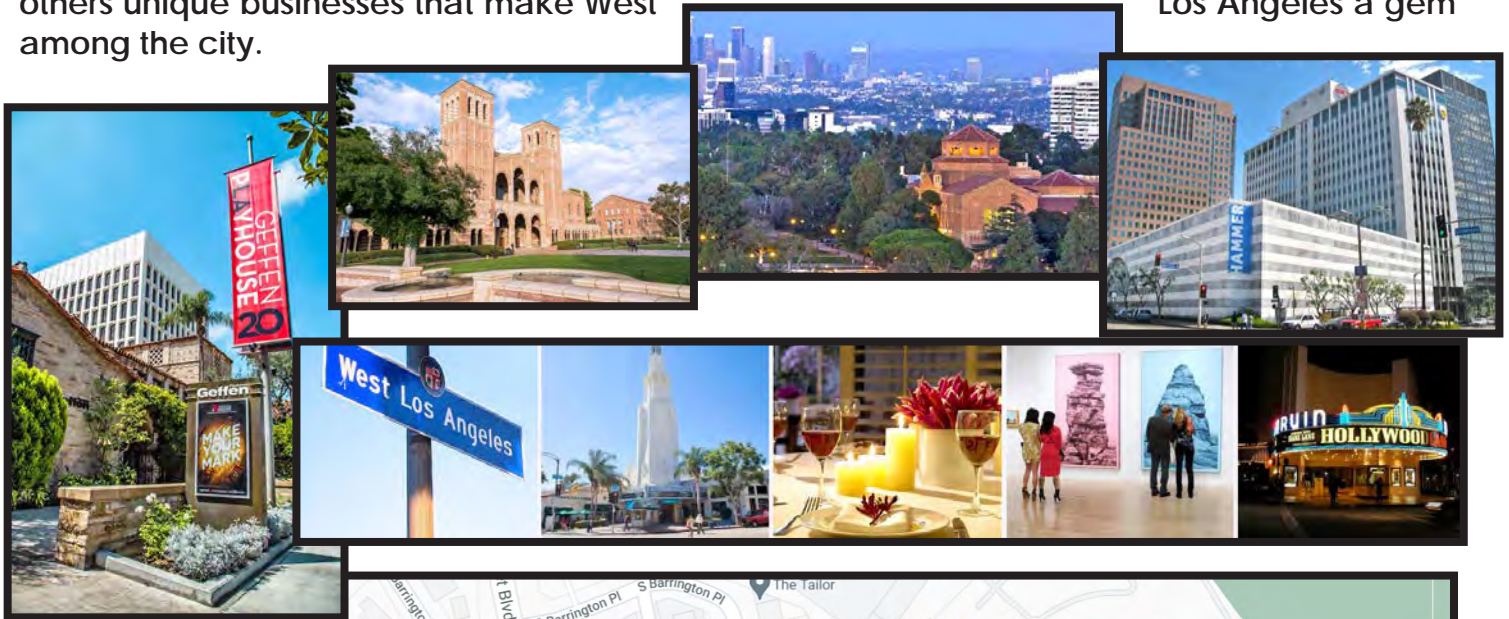
RUDY QUINTANAR  
310.395.2663 x128  
RUDY@PARCOMMERCIAL.COM  
Lic# 00912513



# NEIGHBORHOOD HIGHLIGHTS

West Los Angeles is a vivacious, unpretentious neighborhood made up of single-family residences, multi-story complexes and is surrounded by bustling city streets. Its urban borders

stretch from the beautiful sea-side sights of Santa Monica to the wonderfully storied streets of upscale Westwood, Brentwood and Beverly Hills neighborhoods. The West Los Angeles neighborhood fits perfectly into the mix, as the streets of Santa Monica, Sepulveda and Pico Boulevard all gleam with their own eclectic mix of retailers, which include vintage diners, low-key coffee shops, indie theatres, sprawling office campuses, favorite strip malls and many others unique businesses that make West Los Angeles a gem among the city.



RUDY QUINTANAR  
310.395.2663 x128  
RUDY@PARCOMMERCIAL.COM  
Lic# 00912513

