



SANTA MONICA OFFICE SPACE FOR LEASE



**1323
LINCOLN
BOULEVARD**
SANTA MONICA, CA
90401

SUITE 230: Approximately 900 square feet at \$2,700 per month, MG (janitorial)

SUITE 240: Approximately 850 square feet at \$2,550 per month, MG (janitorial)
Unit has kitchenette, bath with shower and double patios. Bright and cheery.

PARKING: 2/1000 parking ratio @ \$165 per space per month

TERM: 3 - 5 years

AVAILABLE: Immediately

- Quaint and charming offices with patios
- Hard to find, office space in downtown Santa Monica
- Retail space is currently built out as a salon
- Close to the I-10 freeway
- Numerous restaurants, shops and banks nearby including Third Street Promenade and Santa Monica Place

GREG ECKHARDT
310.395.2663 x103
GECKO@PARCOMMERCIAL.COM
Lic# 01255469

RUDY QUINTANAR
310.395.2663 x128
RUDY@PARCOMMERCIAL.COM
Lic# 00912513

1250 6th St., #303, Santa Monica, CA 90401 • 310.395.2663 • www.parcommercial.com

SUITE 230 PHOTOS

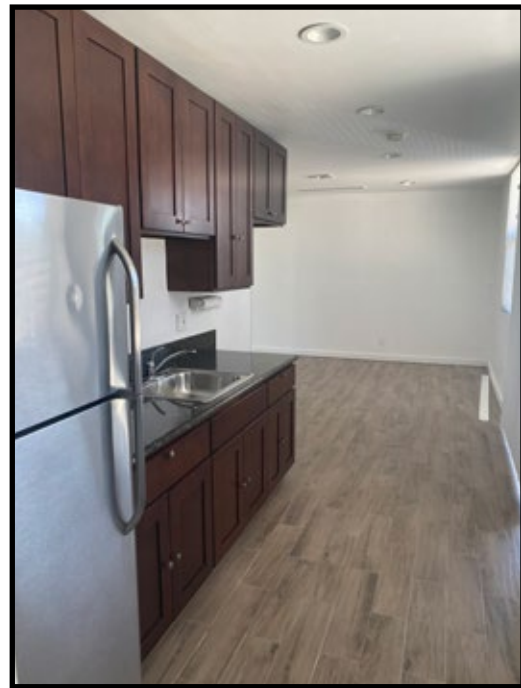
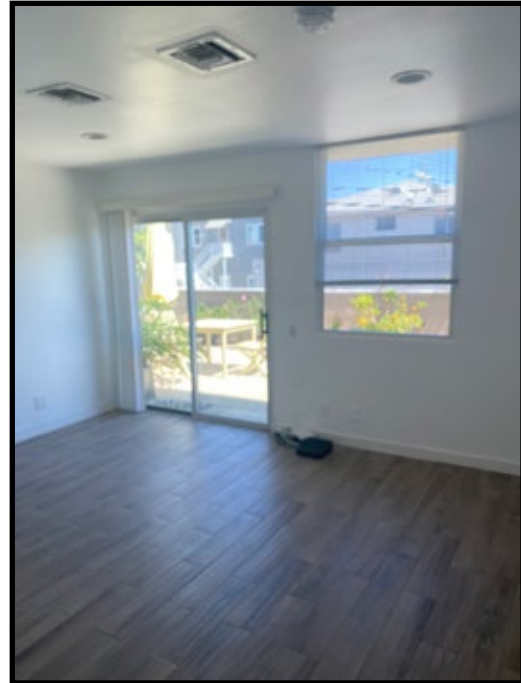


GREG ECKHARDT
310.395.2663 x103
GECKO@PARCOMMERCIAL.COM
Lic# 01255469

RUDY QUINTANAR
310.395.2663 x128
RUDY@PARCOMMERCIAL.COM
Lic# 00912513



SUITE 240 PHOTOS

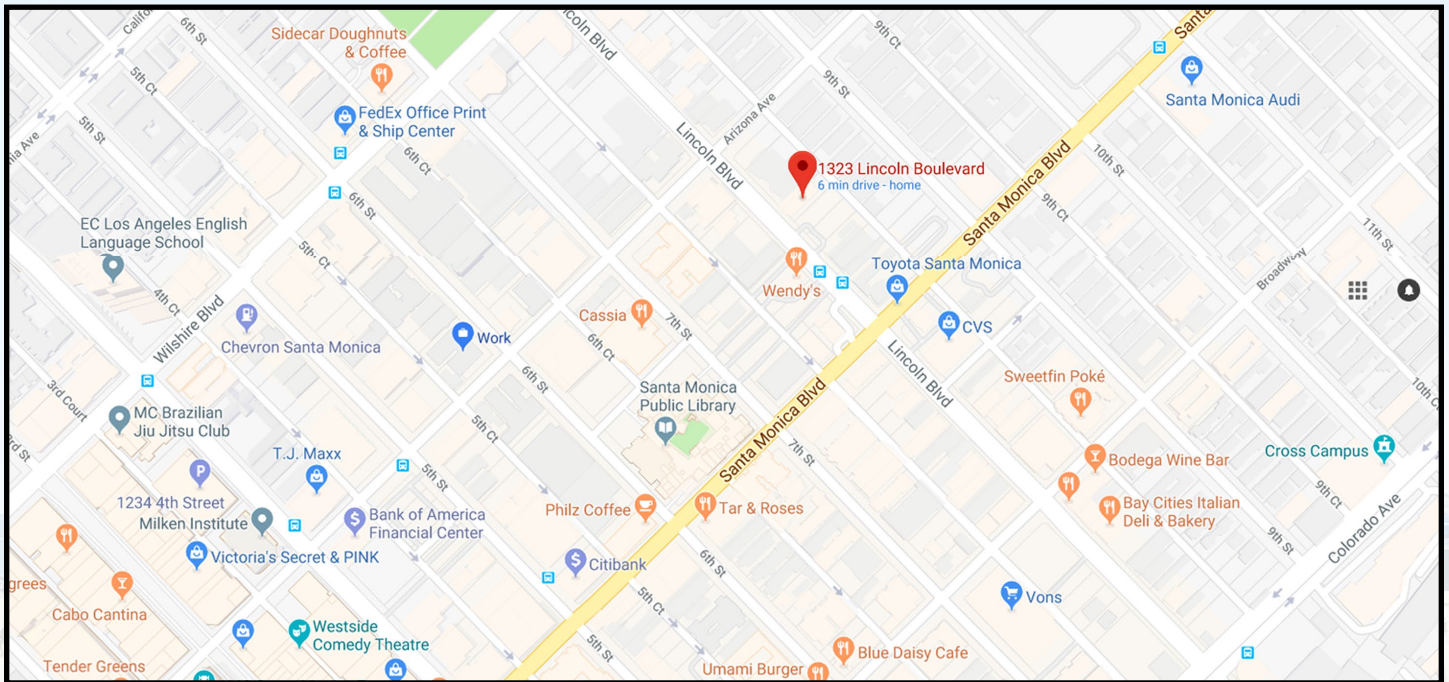


GREG ECKHARDT
310.395.2663 x103
GECKO@PARCOMMERCIAL.COM
Lic# 01255469

RUDY QUINTANAR
310.395.2663 x128
RUDY@PARCOMMERCIAL.COM
Lic# 00912513



NEIGHBORHOOD HIGHLIGHTS



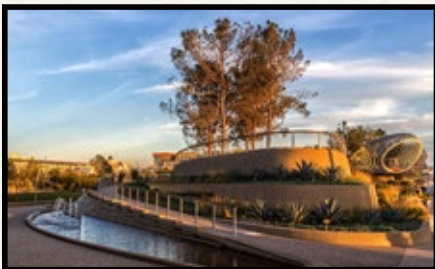
Third Street Promenade



Le Meridien Delfina Santa Monica



Santa Monica Place



Tongva Park



**The Bungalow at the Fairmont
Santa Monica**



Santa Monica Pier

GREG ECKHARDT
310.395.2663 x103
GECKO@PARCOMMERCIAL.COM
Lic# 01255469

RUDY QUINTANAR
310.395.2663 x128
RUDY@PARCOMMERCIAL.COM
Lic# 00912513

