



# CREATIVE OFFICE SPACE FOR LEASE



**3402 MOTOR AVENUE, SUITE B, LOS ANGELES, CA 90034**

**SIZE:** Approximately 2,150 square feet

**RATE:** \$5,590 per month, MG  
(Net of electrical & janitorial)

**PARKING:** 4 parking spaces at \$85 per space per month (additional spaces available in neighboring lot)

**TERM:** Negotiable

**AVAILABLE:** Immediately

- Three private offices and a large conference room
- High ceilings with clearstory skylights
- Private restroom, kitchenette and HVAC
- CAT 5 wired + free security alarm included
- Adjacent to newly re-developed Woodbine Park
- Walking distance to metro line and numerous amenities
- Near I-10 & 405 freeways

**ARTHUR PETER**

**310.395.2663 x101**

**ARTHUR@PARCOMMERCIAL.COM**

**Lic# 01068613**

**RAFAEL PADILLA**

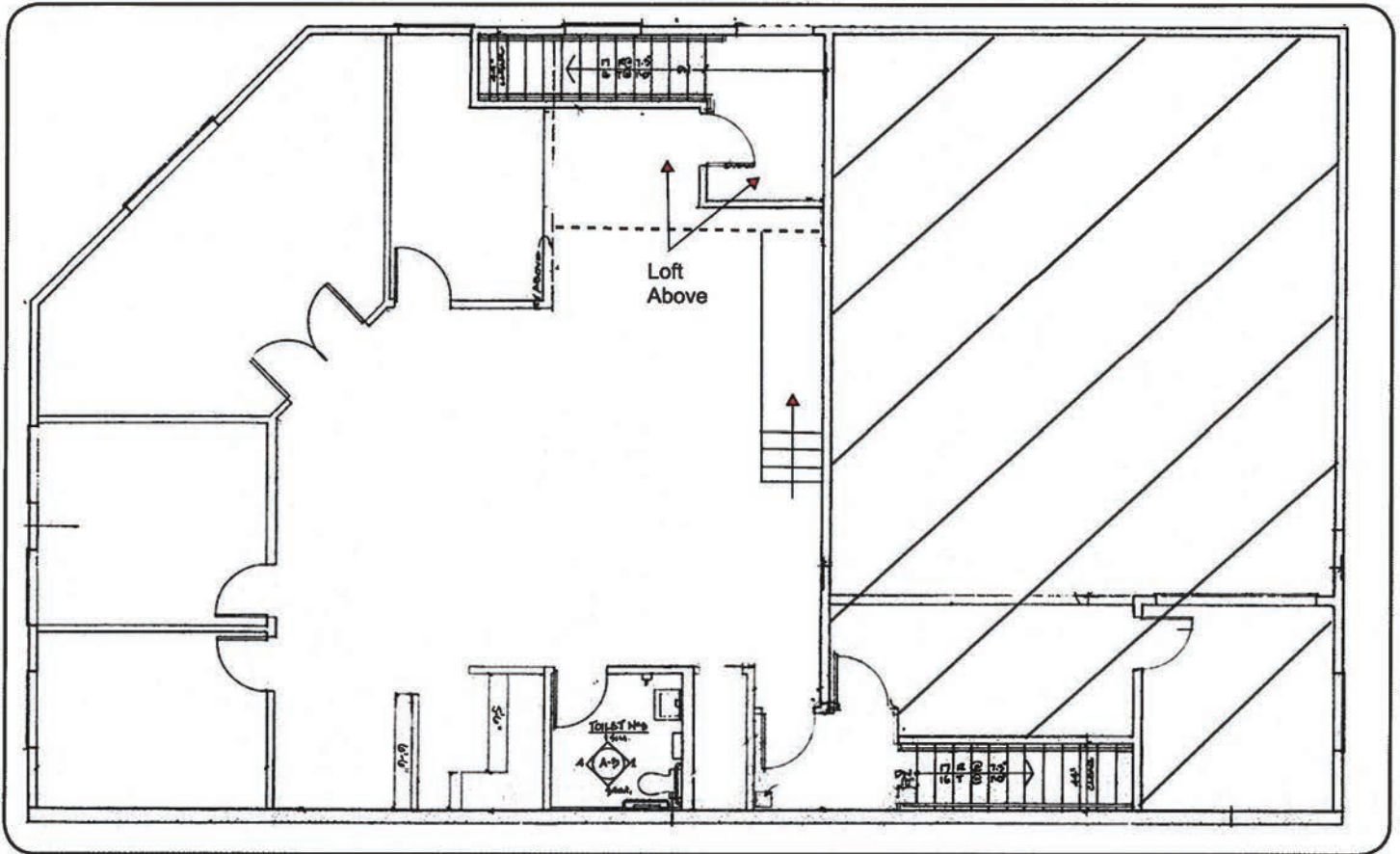
**310.395.2663 x102**

**RAFAEL@PARCOMMERCIAL.COM**

**Lic# 00960188**

1250 6th St., #303, Santa Monica, CA 90401 • 310.395.2663 • [www.parcommercial.com](http://www.parcommercial.com)

# FLOOR PLAN & PHOTOS



**ARTHUR PETER**  
310.395.2663 x101  
ARTHUR@PARCOMMERCIAL.COM  
Lic# 01068613

**RAFAEL PADILLA**  
310.395.2663 x102  
RAFAEL@PARCOMMERCIAL.COM  
Lic# 00960188

