



1ST FLOOR CREATIVE OFFICE SPACE



FOR LEASE

3402 MOTOR AVENUE, SUITE A, LOS ANGELES, CA 90034

SIZE: Approximately 1,450 square feet

RATE: \$3,770 per month, MG
(Net of electrical & janitorial)

PARKING: 3 parking spaces at \$85 per space per month (additional spaces available in neighboring lot)

TERM: Negotiable

AVAILABLE: Immediately

- 1st floor lobby entrance
- Large display window
- Private restroom, kitchenette and HVAC
- CAT 5 wired + free security alarm included
- Window darkening system
- Adjacent to newly re-developed Woodbine Park
- Walking distance to metro line and numerous amenities
- Near I-10 & 405 freeways

ARTHUR PETER

310.395.2663 x101

ARTHUR@PARCOMMERCIAL.COM

Lic# 01068613

RAFAEL PADILLA

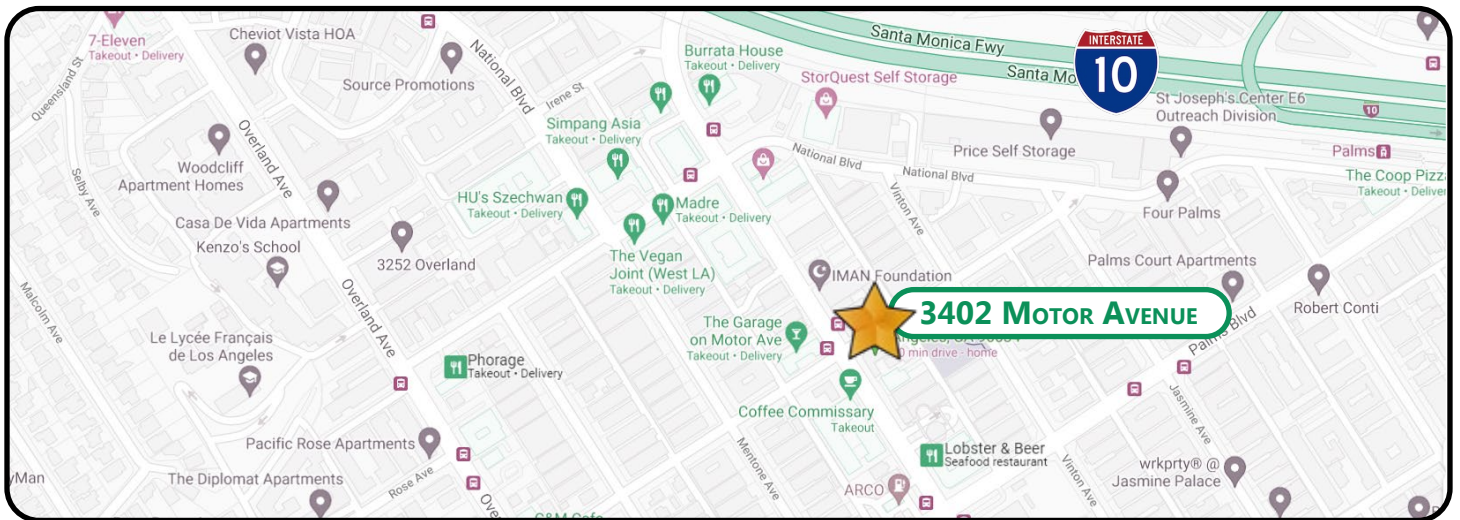
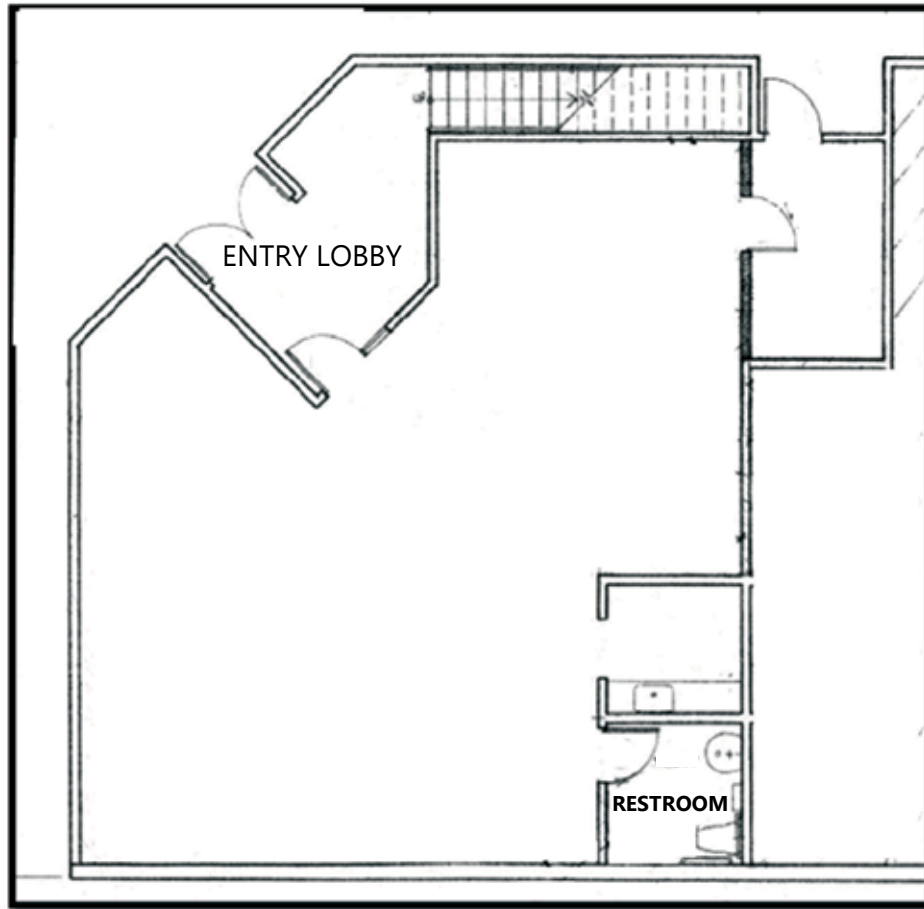
310.395.2663 x102

RAFAEL@PARCOMMERCIAL.COM

Lic# 00960188

1250 6th St., #303, Santa Monica, CA 90401 • 310.395.2663 • www.parcommercial.com

FLOOR PLAN & MAP

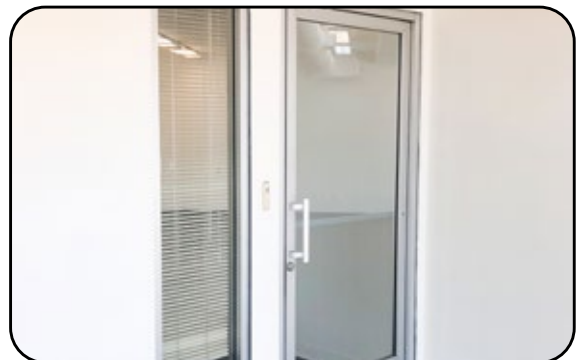
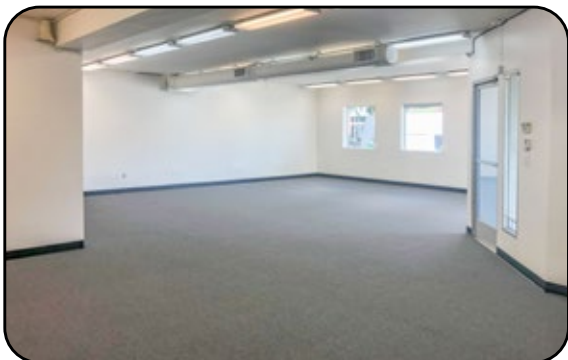
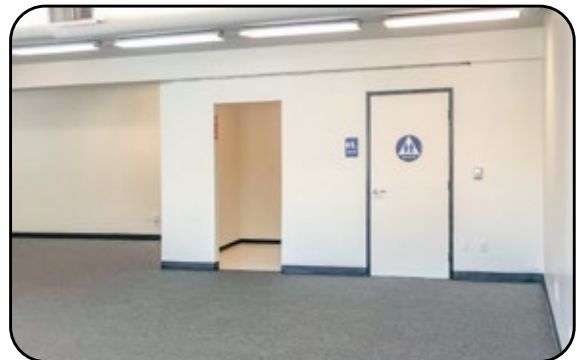
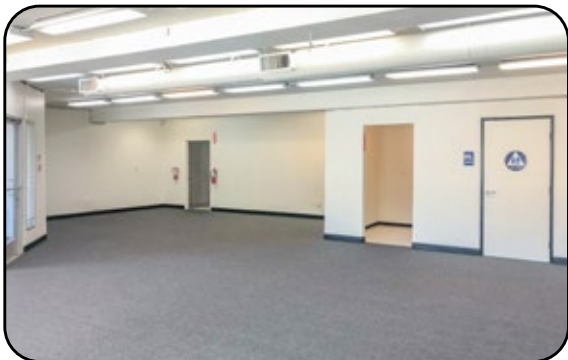


ARTHUR PETER
310.395.2663 x101
ARTHUR@PARCOMMERCIAL.COM
Lic# 01068613

RAFAEL PADILLA
310.395.2663 x102
RAFAEL@PARCOMMERCIAL.COM
Lic# 00960188



PROPERTY PHOTOS



ARTHUR PETER
310.395.2663 x101
ARTHUR@PARCOMMERCIAL.COM
Lic# 01068613

RAFAEL PADILLA
310.395.2663 x102
RAFAEL@PARCOMMERCIAL.COM
Lic# 00960188

