

COLONIAL CORNERS

OFFICE SPACE FOR LEASE



11685 NATIONAL BOULEVARD, LOS ANGELES, CA 90064

SIZE: APPROXIMATELY 2,316 SQUARE FEET

RATE: \$2.75 PER SQUARE FOOT PER MONTH, MG

TERM: 1-5 YEARS

PARKING: SHARED CUSTOMER PARKING LOT IN REAR OF BUILDING

AVAILABLE: IMMEDIATELY

■ GREAT GROUND FLOOR OFFICE SPACE IN CHARMING BUILDING ACROSS THE STREET FROM WHOLE FOODS AND STARBUCKS

■ LARGE OPEN FLOOR PLAN WITH ONE BATHROOM AND SIZEABLE KITCHEN/STORAGE ROOM

■ EASY ACCESS TO 405 FREEWAY AND I-10 FREEWAY



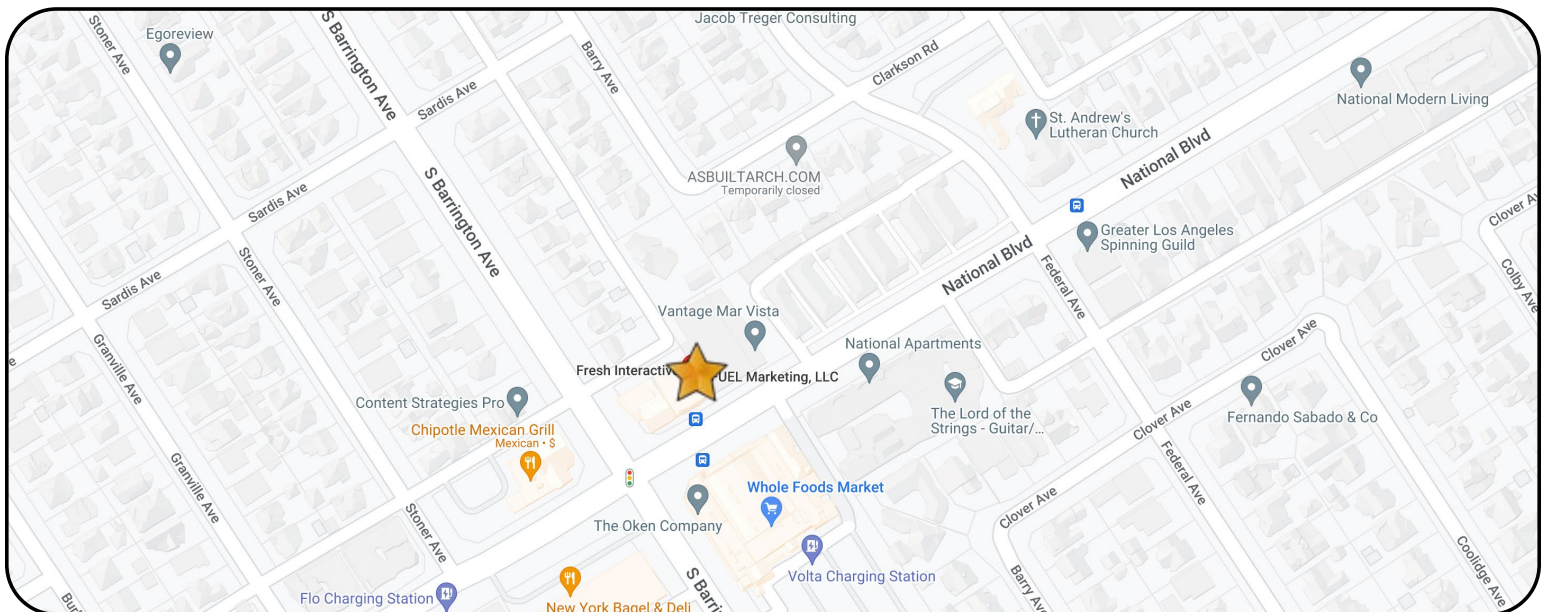
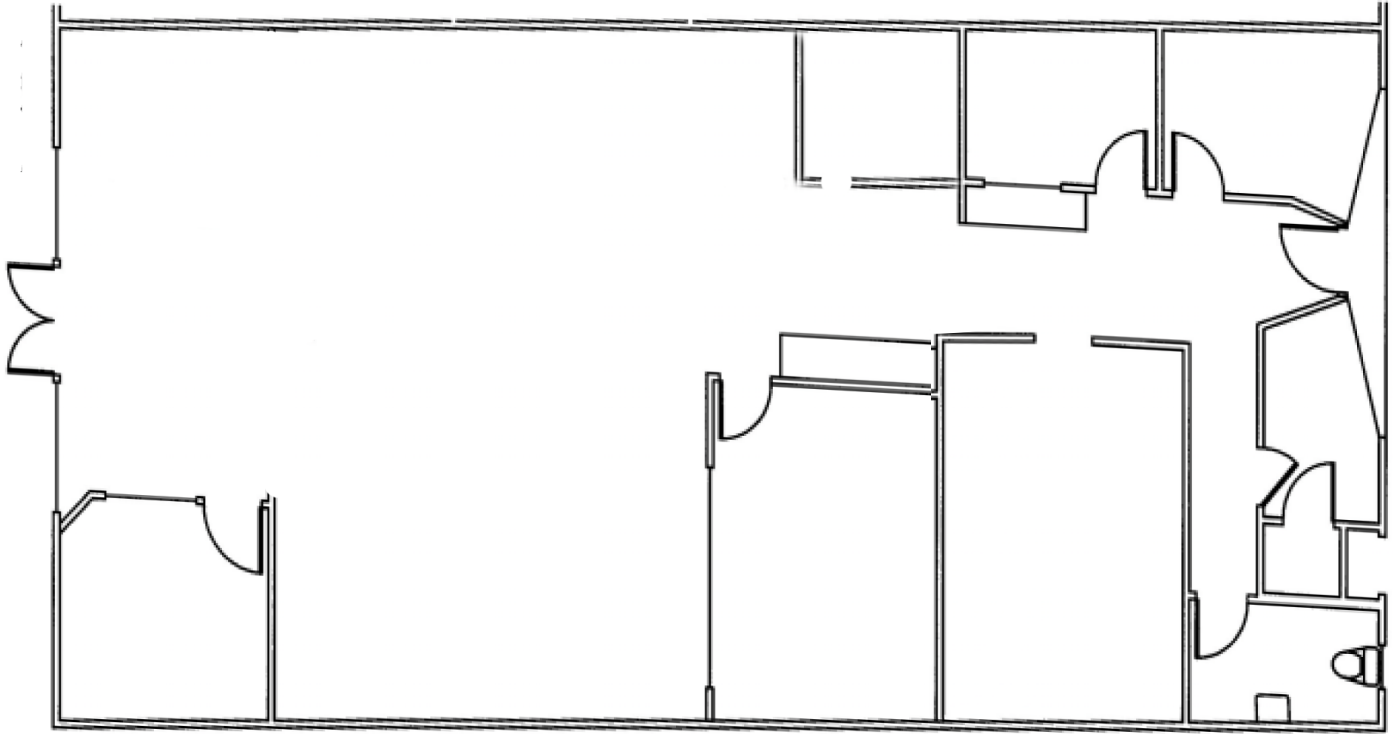
RAFAEL PADILLA
310.395.2663 X102
RAFAEL@PARCOMMERCIAL.COM
LIC# 00960188

ARTHUR PETER
310.395.2663 X103
ARTHUR@PARCOMMERCIAL.COM
LIC# 01068613

All information furnished is from sources deemed reliable and which we believe to be correct, but no representation or guarantee is given as to its accuracy and is subject to errors and omissions. All measurements are approximate and have not been verified by Broker. You are advised to conduct an independent investigation to verify all information.

COLONIAL CORNERS

OFFICE SPACE FOR LEASE



RAFAEL PADILLA
 310.395.2663 X102
 RAFAEL@PARCOMMERCIAL.COM
 LIC# 00960188

ARTHUR PETER
 310.395.2663 X103
 ARTHUR@PARCOMMERCIAL.COM
 LIC# 01068613

All information furnished is from sources deemed reliable and which we believe to be correct, but no representation or guarantee is given as to its accuracy and is subject to errors and omissions. All measurements are approximate and have not been verified by Broker. You are advised to conduct an independent investigation to verify all information.