



MAIN STREET RETAIL SPACE FOR LEASE



2708 MAIN STREET, SANTA MONICA, CA 90405

SIZE: Approximately 2,362 square feet
divisible to 1,181 square feet

RATE: \$5.00 per square foot per month, NNN
(NNN estimated to be \$1.20 per square
foot per month)

PARKING: Public lots behind building

TERM: 5 - 10 Years

AVAILABLE: Immediately

- **Great visibility with Main Street frontage and tremendous daily pedestrian and automobile traffic**
- **Neighbors include Jameson's Irish Pub, Lula Cocina Mexicana, Starbucks and more**
- **Close proximity to the beach and Downtown Santa Monica**
- **High income area with strong demographics and eclectic mix of retailers**

GREG ECKHARDT
310.395.2663 x103
GECKO@PARCOMMERCIAL.COM
Lic# 01255469

1250 6th St., #303, Santa Monica, CA 90401 • 310.395.2663 • www.parcommercial.com



PROPERTY PHOTOS



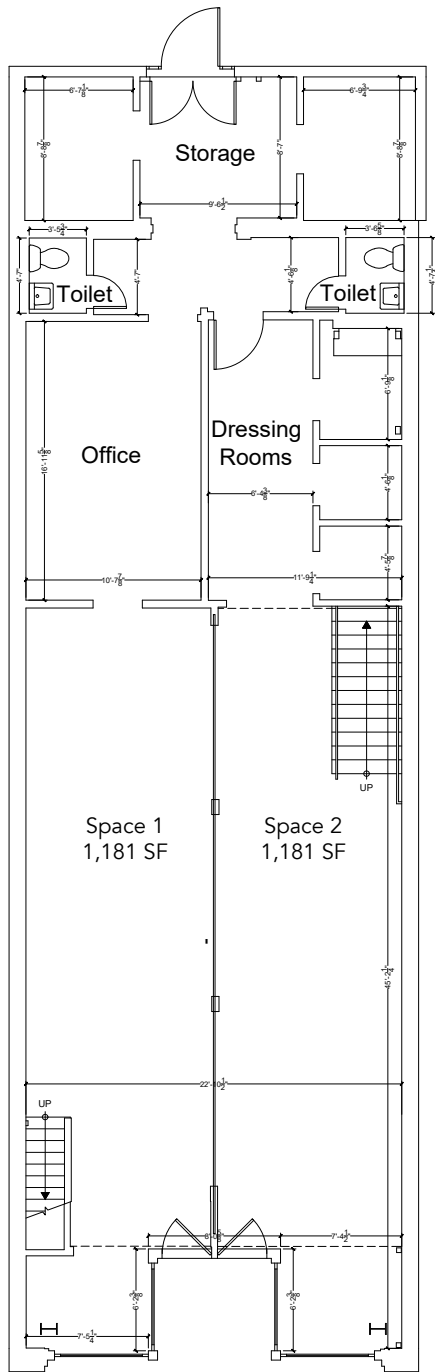
GREG ECKHARDT
310.395.2663 x103
GECKO@PARCOMMERCIAL.COM
Lic# 01255469

1250 6th St., #303, Santa Monica, CA 90401 • 310.395.2663 • www.parcommercial.com

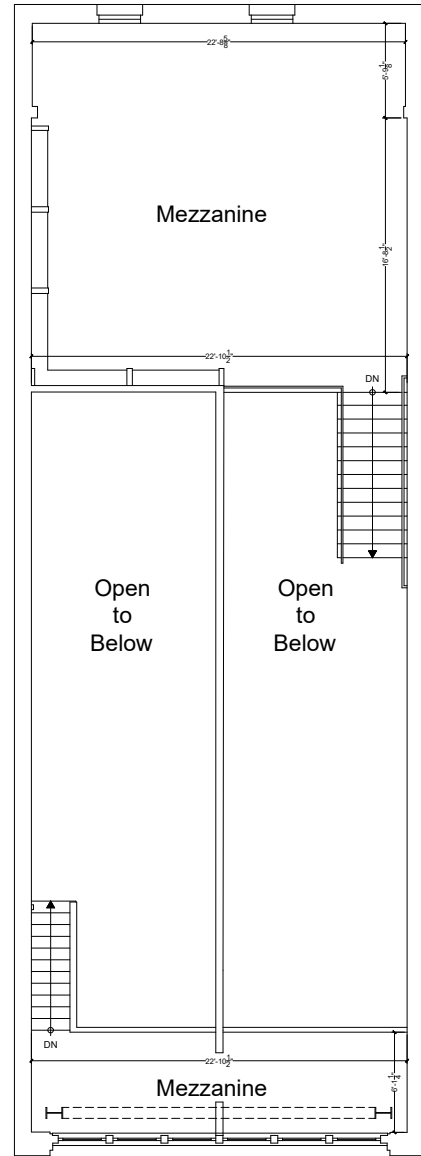
All information furnished is from sources deemed reliable and which we believe to be correct, but no representation or guarantee is given as to its accuracy and is subject to errors and omissions. All measurements are approximate and have not been verified by Broker. You are advised to conduct an independent investigation to verify all information.



FLOOR PLAN



First Floor (Divisible)



Mezzanine

GREG ECKHARDT
310.395.2663 x103
GECKO@PARCOMMERCIAL.COM
Lic# 01255469

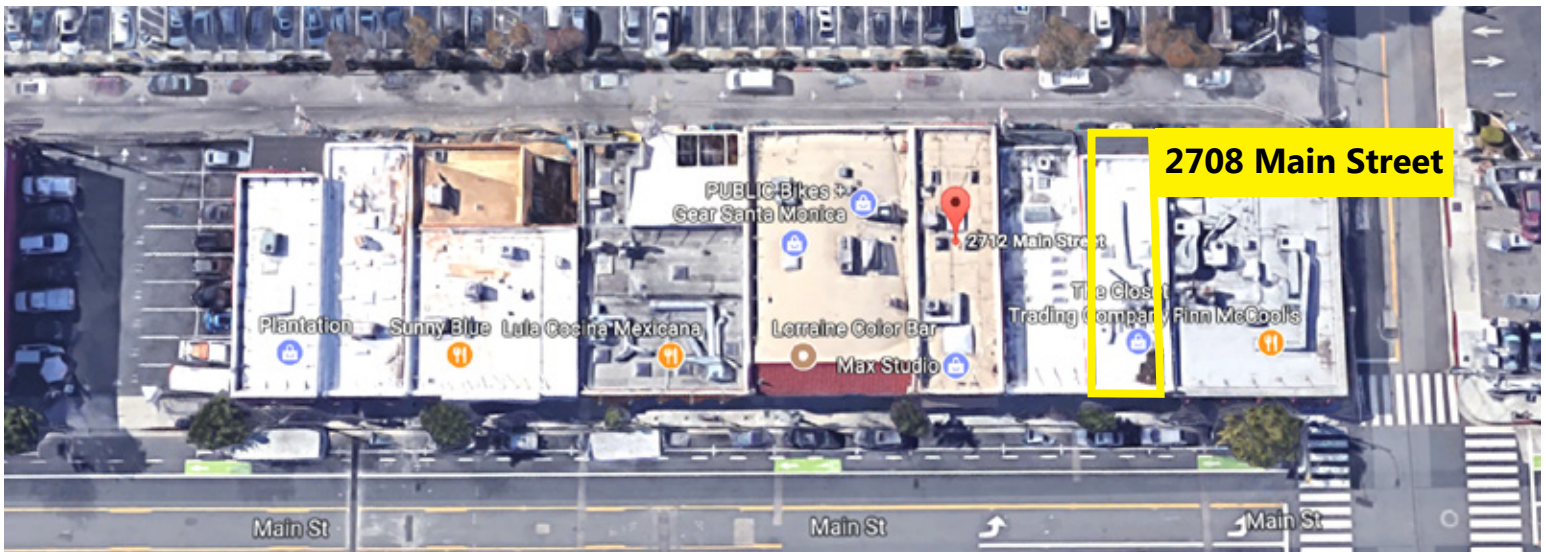
1250 6th St., #303, Santa Monica, CA 90401 • 310.395.2663 • www.parcommercial.com



AREA MAPS

- 1.) Chinois
- 2.) Tavern on Main
- 3.) La Vecchia Cucina
- 4.) Sea Colony Apartments
- 5.) The Shores Apartments
- 6.) Sea Colony II Apartments
- 7.) CVS/Venice Renaissance Apartments
- 8.) Library Alehouse
- 9.) Starbucks

★ **2708 Main Street - FOR LEASE**



GREG ECKHARDT
310.395.2663 x103
GECKO@PARCOMMERCIAL.COM
Lic# 01255469

1250 6th St., #303, Santa Monica, CA 90401 • 310.395.2663 • www.parcommercial.com