

**1247 3RD STREET PROMENADE**  
**Santa Monica, CA 90401**

**RETAIL/RESTAURANT/BAR/NIGHT CLUB**

**FOR LEASE**



**GREG ECKHARDT**  
**310.395.2663 X103**  
**GECKO@PARCOMMERCIAL.COM**  
**LIC# 01255469**

**RAFAEL PADILLA**  
**310.395.2663 X102**  
**RAFAEL@PARCOMMERCIAL.COM**  
**LIC# 00960188**

# 1247 3rd Street Promenade, Santa Monica, CA 90401

**SIZE:** Approximately 7,500 total square feet

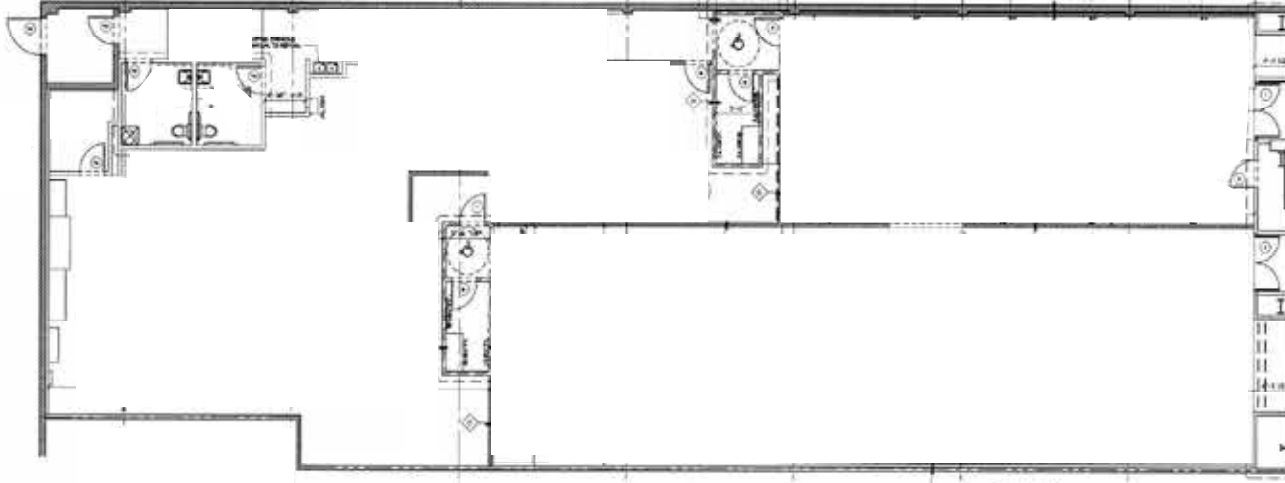
**RATE:** \$8.00 per square foot per month. NNN

**TERM:** 5-10 years

**PARKING:** Santa Monica City public parking structures with 90 minutes free. Monthly parking is currently \$220 per month.

**AVAILABLE:** Immediately

**FLOOR PLAN:**



- **Landlord to work with lessee to obtain liquor and/or entertainment permits**
- **Approximately 50 feet frontage**
- **Bow truss roof**
- **Potential uses include sports bar, billiards club, dance hall, event rental**
- **3 blocks from Metro E Line station**
- **Situated in the best fine dining, retail and fast food in the country**
- **A short walk to the Santa Monica Pier and Palisades Park**



**GREG ECKHARDT**  
 310.395.2663 X103  
 GECKO@PARCOMMERCIAL.COM  
 LIC# 01255469

**RAFAEL PADILLA**  
 310.395.2663 X102  
 RAFAEL@PARCOMMERCIAL.COM  
 LIC# 00960188

# BY YOUR SIDE

## CAFES/RESTAURANTS

- 1 Fig
- 2 Pacific Catch
- 3 Hillstone
- 4 Wally's Wine
- 5 California Pizza Kitchen
- 6 Lotus Dim Sum
- 7 1212 Santa Monica
- 8 Lemonade
- 9 Gyu-Kaku
- 10 Tender Greens
- 11 Uovo
- 12 HiHo Burger
- 13 Cava
- 14 Sugarfish
- 15 The Misfit
- 16 Barney's Beanery
- 17 BOA Steakhouse
- 18 Water Grill
- 19 The Craftsman
- 20 KazuNori
- 21 Meat on Ocean
- 22 Del Frisco's
- 23 True Food
- 24 Bruxie
- 25 BIBIBOP



## SHOPPING

- 26 Apple
- 27 Sephora
- 28 Patagonia
- 29 Lululemon
- 30 Anthropologie
- 31 H&M
- 32 Urban Outfitters
- 33 Nordstrom
- 34 Santa Monica Place

## ARTS & ENTERTAINMENT

- 35 AMC Broadway 4
- 36 AMC Santa Monica 7

## HOTELS

- 37 Fairmont Miramar
- 38 The Huntly
- 39 Shore Hotel
- 40 The Pierside
- 41 Ocean View Hotel
- 42 Georgian Hotel
- 43 Hotel Carmel
- 44 Shangri-La
- 45 Loews

## SPAS/BEAUTY

- 46 Exhale LA
- 47 Massage Co
- 48 Ocean Oasis
- 49 Burke Williams
- 50 Tikkun Holistic
- 51 Lloyd's Barbershop
- 52 Salon Republic
- 53 Saulino Smith
- 54 Brambila Salon

## BANKS

- 55 Bank of America
- 56 Chase Bank
- 57 Wells Fargo
- 58 Citibank
- 59 Union Bank

## FITNESS

- 60 Gold's Gym
- 61 Burn Fitness
- 62 SoulCycle
- 63 Pure Barre
- 64 Pilates Platinum
- 65 Equinox
- 66 Orangetheory
- 67 Hot 8 Yoga



**GREG ECKHARDT**  
 310.395.2663 X103  
 GECKO@PARCOMMERCIAL.COM  
 LIC# 01255469

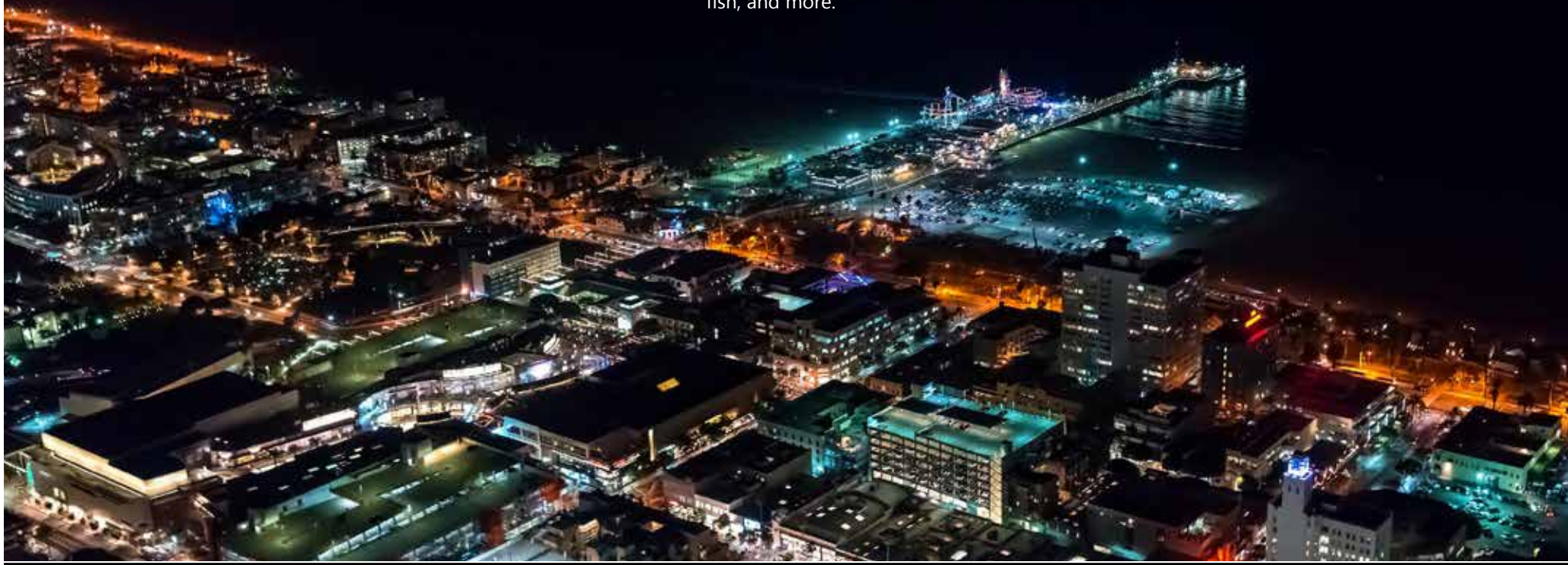
**RAFAEL PADILLA**  
 310.395.2663 X102  
 RAFAEL@PARCOMMERCIAL.COM  
 LIC# 00960188



# SANTA MONICA

Santa Monica is a beachside city of 8.3 square miles on the westside of Los Angeles County. Offering an environment of unparalleled natural beauty, the city is home to a mix of residential communities, commercial districts and recreational venues. Recently named by National Geographic as one of the "Top 10 Beach Cities in The World", and by TIME as one of the "Best Places to Live", Santa Monica features 3 miles of Pacific beaches and the Santa Monica Pier. Santa Monica's residential population is approximately 93,000 increasing to an estimated 250,000 during the day with tourist, shoppers and employees. Tourism attracts over 8 million visitors annually.

Part of the reason that so many world renowned chefs set up shop in Santa Monica is due to its numerous bountiful farmers markets. Named by Travel + Leisure as the best farmers market in the country, Santa Monica's four weekly farmers markets attract the city's residents and local chefs with the freshest produce, flowers, meats, cheeses, nuts, fish, and more.



**GREG ECKHARDT**  
310.395.2663 X103  
GECKO@PARCOMMERCIAL.COM  
LIC# 01255469

**RAFAEL PADILLA**  
310.395.2663 X102  
RAFAEL@PARCOMMERCIAL.COM  
LIC# 00960188