

3679 MOTOR AVENUE
Palms, CA 90034

OFFICE SPACES
FOR LEASE

3679

OFFICE AVAILABLE
310-204-0472

CAUTION
DO NOT OPEN
OUTWARD

ARTHUR PETER
310.395.2663 x101
arthur@parcommercial.com
Lic#01068613

JEFF JAROW
310.395.2663 x105
jeff@parcommercial.com
Lic#00870996



Property Characteristics

3679 MOTOR AVENUE
Palms, CA 90034

SUITE 200: Approximately 1,807 rentable square feet
• Bull pen area, 3 windowed offices, 3 interior offices

SUITE 205: Approximately 550 rentable square feet
• 1 windowed office with washroom

SUITE 300: Approximately 1,951 rentable square feet
• 4 offices, reception and bull pen

SUITE 301: Approximately 1,680 rentable square feet
• 5 windowed offices, kitchen and reception

RATE: \$2.75 per square foot per month, Full Service Gross

AVAILABLE: Immediately

PARKING: \$100 per space per month

TERM: 3-5 years

- Extensively remodeled and professionally managed building
- Move-in ready offices with operable windows
- Close to Sony Studios, Century City, Santa Monica, Downtown Los Angeles and Downtown Culver is just minutes away
- Easy access to both 405 and 10 freeways
- Ideal for creative offices and therapist
- Walkable distance to Expo Line - Palms Station



www.parcommercial.com

ARTHUR PETER

310.395.2663 x101

arthur@parcommercial.com

Lic#01068613

JEFF JAROW

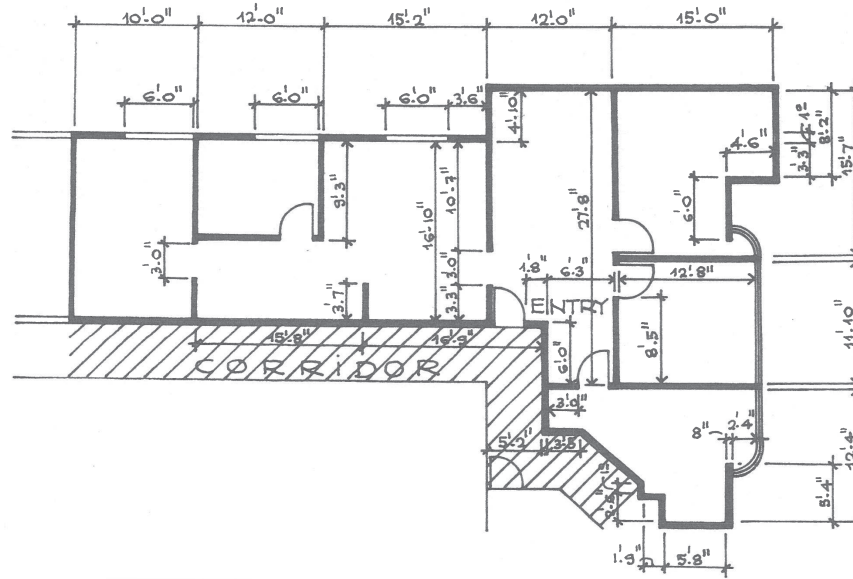
310.395.2663 x105

jeff@parcommercial.com

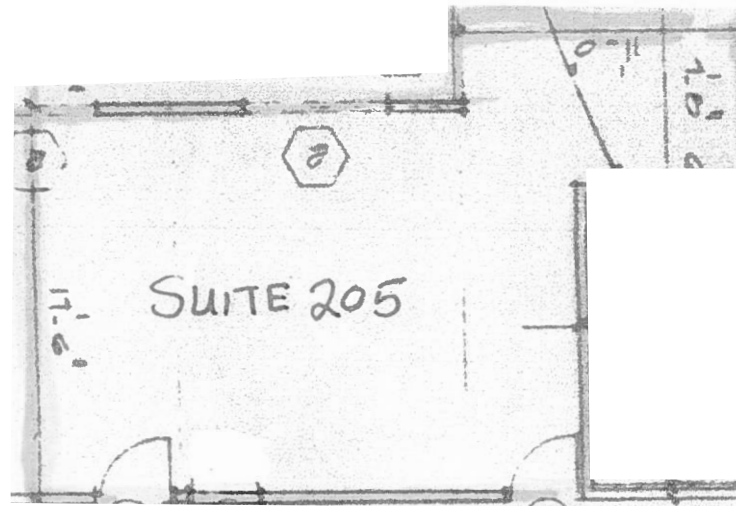
Lic#00870996

All information furnished is from sources deemed reliable and which we believe to be correct, but no representation or guarantee is given as to its accuracy and is subject to errors and omissions. All measurements are approximate and have not been verified by Broker. You are advised to conduct an independent investigation to verify all information.

Suite 200: 1,807 RSF



Suite 205: 550 RSF



www.parcommercial.com

ARTHUR PETER

310.395.2663 x101

arthur@parcommercial.com

Lic#01068613

JEFF JAROW

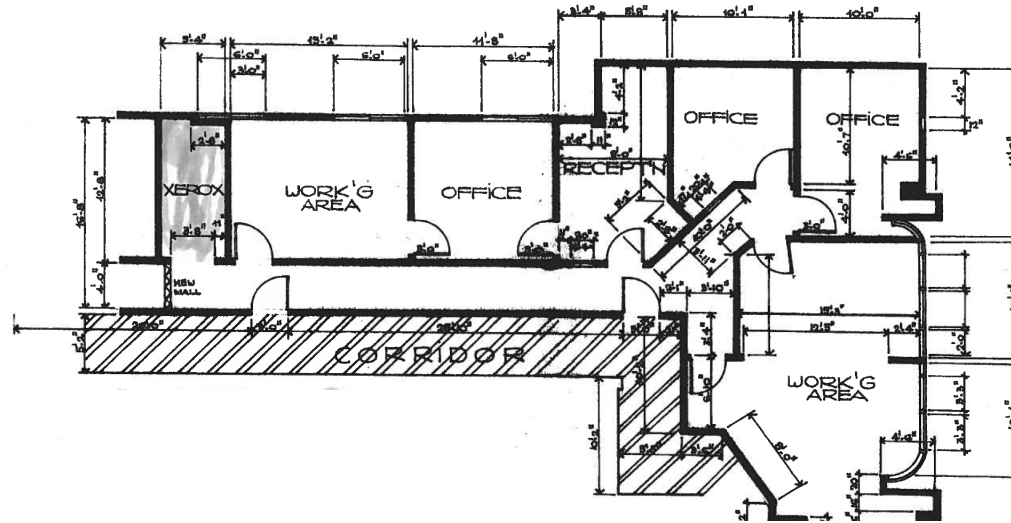
310.395.2663 x105

jeff@parcommercial.com

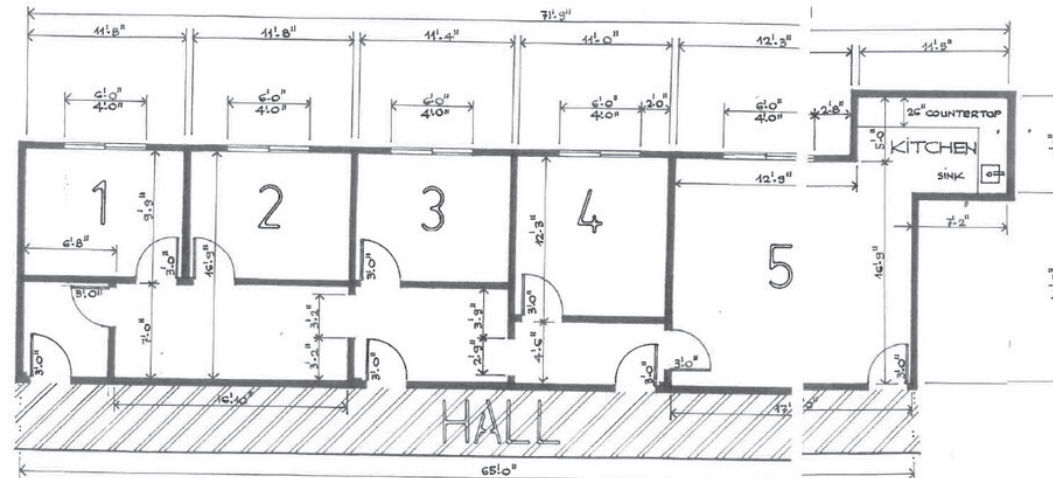
Lic#00870996

All information furnished is from sources deemed reliable and which we believe to be correct, but no representation or guarantee is given as to its accuracy and is subject to errors and omissions. All measurements are approximate and have not been verified by Broker. You are advised to conduct an independent investigation to verify all information.

Suite 300: 1,951 RSF



Suite 301: 1,680 RSF



www.parcommercial.com

ARTHUR PETER

310.395.2663 x101

arthur@parcommercial.com

Lic#01068613

JEFF JAROW

310.395.2663 x105

jeff@parcommercial.com

Lic#00870996

All information furnished is from sources deemed reliable and which we believe to be correct, but no representation or guarantee is given as to its accuracy and is subject to errors and omissions. All measurements are approximate and have not been verified by Broker. You are advised to conduct an independent investigation to verify all information.



ARTHUR PETER

310.395.2663 x101

arthur@parcommercial.com

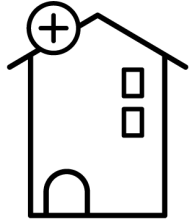
Lic#01068613

JEFF JAROW

310.395.2663 x105

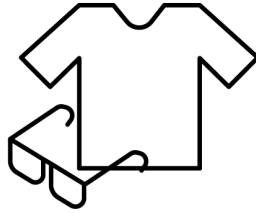
jeff@parcommercial.com

Lic#00870996



Median Home Value

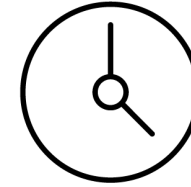
\$1,075,750



Apparel, Food/Entertainment & Services

\$477,756

2023 yearly consumer spending



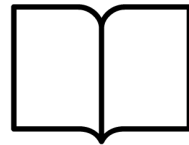
Estimated Population

53,089



Housing Units

27,587



Educational Attainment

57%

with college or higher degree



Average Household Income

\$110,840

POPULATION

1-MILE RADIUS

3-MILE RADIUS

5-MILE RADIUS

2028 Projected Population	52,071	298,952	777,006
2023 Estimated Population	53,089	304,178	789,224
2010 Census Population	52,835	299,490	770,701
Growth 2023-2028	-1.92%	-1.72%	-1.55%
Growth 2010-2023	0.48%	1.57%	2.40%
2023 HOUSEHOLDS BY HH INCOME \$50,000 +			
\$50,000-\$74,999	3,637	18,121	45,043
\$75,000-\$99,000	3,760	15,535	37,223
\$100,000 +	10,710	64,504	17,347
TOTAL	18,107	98,160	253,613
2023 Estimated Average HH Income	\$110,840	\$124,679	\$126,054
2023 Estimated Households	24,731	132,585	347,986



ARTHUR PETER

310.395.2663 x101

arthur@parcommercial.com

Lic#01068613

JEFF JAROW

310.395.2663 x105

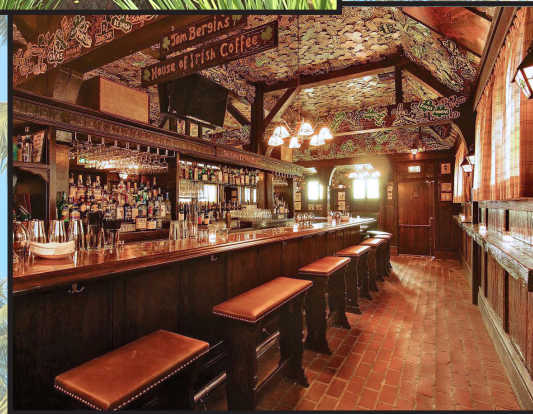
jeff@parcommercial.com

Lic#00870996

PALMS

is a densely populated neighborhood with a current population of 53,089. It's located on the Westside of L.A., just north of Culver City. To the south is Cheviot Hills, Beverlywood and Rancho Park. To the east, you'll find Mid City, and to the west is Mar Vista and Venice. Palm has an average age range of 19 to 35 years old and is primarily for singles or small families.

Palms has an endless supply of entertainment from dining to nightlife and everything in between — there's never a dull moment here. There are many popular dining areas in the neighborhood, such as The Irish Times Pub & Restaurant, Lobster & Beer and The Doughroom, known for its pizza, craft beer and use of local ingredients.



ARTHUR PETER

310.395.2663 x101

arthur@parcommercial.com

Lic#01068613

JEFF JAROW

310.395.2663 x105

jeff@parcommercial.com

Lic#00870996