

3117 OCEAN PARK
Santa Monica, CA 90405

RESTAURANT/CAFE SPACE
FOR LEASE



RAFAEL PADILLA
310.395.2663 X102
RAFAEL@PARCOMMERCIAL.COM
LIC# 009601

JOHN MOUDAKIS
310.395.2663 X116
JOHNM@PARCOMMERCIAL.COM
LIC# 01833441

PROPERTY CHARACTERISTICS

3117 OCEAN PARK
Santa Monica, CA 90405

BUILDING: Approximately 888 square feet

BASE RENT: \$5,500 per month, NNN

TRIPLE NET: Approximately \$1.50 per square foot

TERM: 5-10 years

PARKING: Metered street parking

AVAILABLE: Immediately

- **2nd generation restaurant**
- **Former OP Cafe**
- **Direct access to the 10 freeway**
- **Across from Santa Monica Business Park, 1.8 million square foot campus**
- **Busy neighborhood with tremendous visibility**
- **Located at the crossroads of Santa Monica and West Los Angeles**
- **Adjacent site for lease as well**



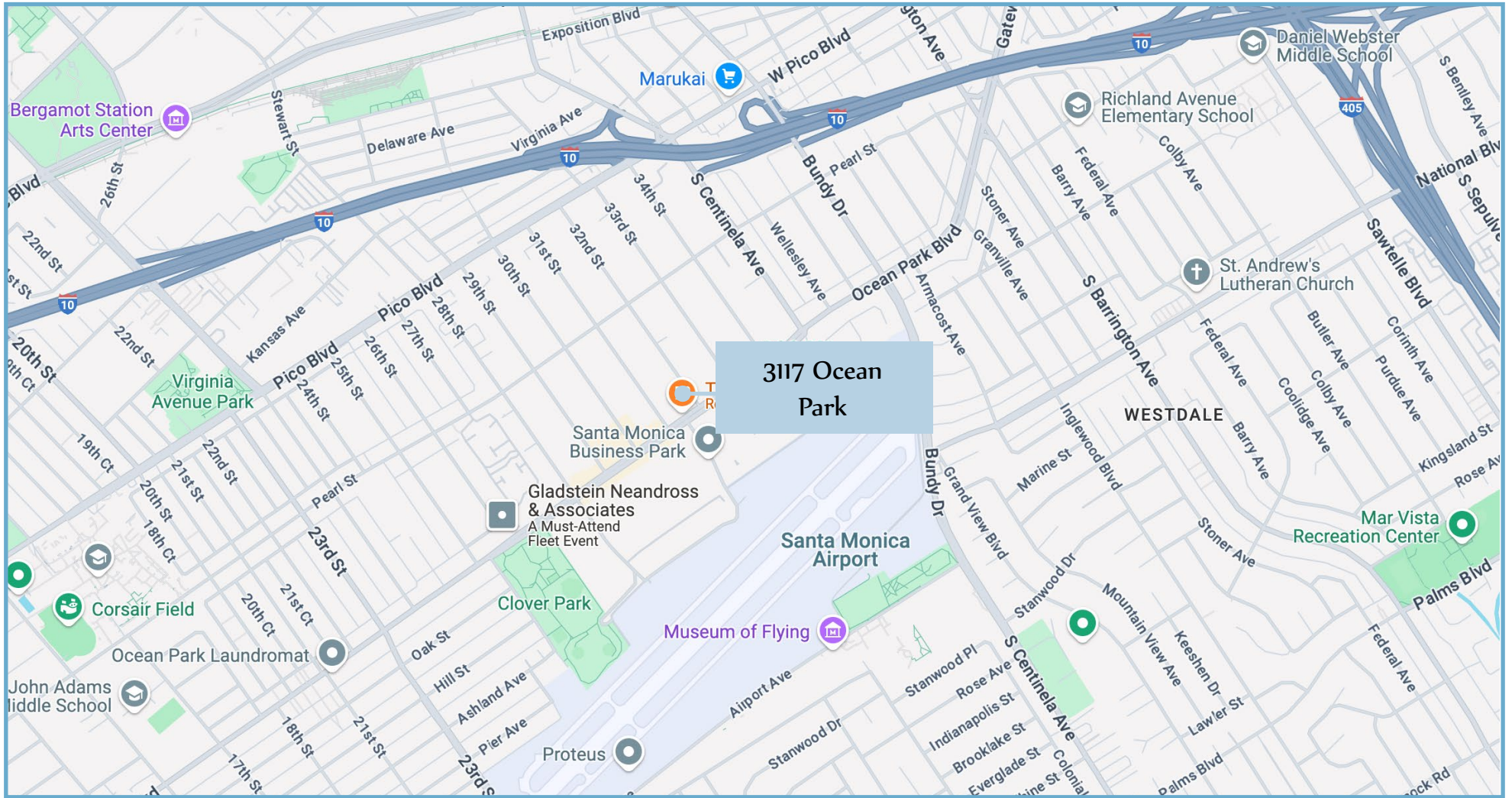
www.parcommercial.com

RAFAEL PADILLA
310.395.2663 X102
RAFAEL@PARCOMMERCIAL.COM
LIC# 009601

JOHN MOUDAKIS
310.395.2663 X116
JOHNM@PARCOMMERCIAL.COM
LIC# 01833441

All information furnished is from sources deemed reliable and which we believe to be correct, but no representation or guarantee is given as to its accuracy and is subject to errors and omissions. All measurements are approximate and have not been verified by Broker. You are advised to conduct an independent investigation to verify all information.

AREA MAP



www.parcommercial.com

RAFAEL PADILLA
310.395.2663 X102
RAFAEL@PARCOMMERCIAL.COM
LIC# 009601

JOHN MOUDAKIS
310.395.2663 X116
JOHNM@PARCOMMERCIAL.COM
LIC# 01833441

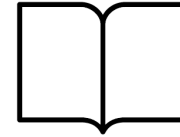
All information furnished is from sources deemed reliable and which we believe to be correct, but no representation or guarantee is given as to its accuracy and is subject to errors and omissions. All measurements are approximate and have not been verified by Broker. You are advised to conduct an independent investigation to verify all information.

DEMOGRAPHICS

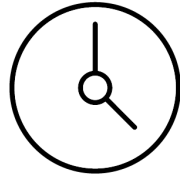
WITHIN 1 MILE



Housing Units
14,079



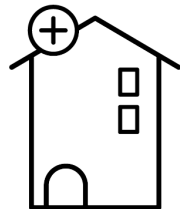
Educational Attainment
60%
with college or higher degree



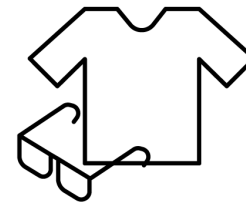
Estimated Population
27,680



Average Household Income
\$125,848



Median Home Value
\$1,045,678



Apparel, Food/Entertainment & Services
\$207,693
2023 yearly consumer spending

	1-MILE RADIUS	3-MILE RADIUS	5-MILE RADIUS
POPULATION			
2028 Projected Population	27,194	323,116	545,458
2023 Estimated Population	27,680	328,680	553,692
2010 Census Population	27,307	323,196	539,116
Growth 2023-2028	-1.76%	-1.69	-1.49%
Growth 2010-2023	1.37%	1.70%	2.70%
2023 ESTIMATED HOUSEHOLDS BY HH INCOME \$50,000 +			
\$50,000-\$74,999	1,726	18,504	28,780
\$75,000-\$99,000	1,075	16,851	26,693
\$100,000 +	6,075	79,583	133,887
TOTAL	8,876	114,938	188,360
2023 Estimated Average HH Income	\$125,848	\$130,292	\$137,236
2023 Estimated Households	12,646	158,136	252,967



www.parcommercial.com

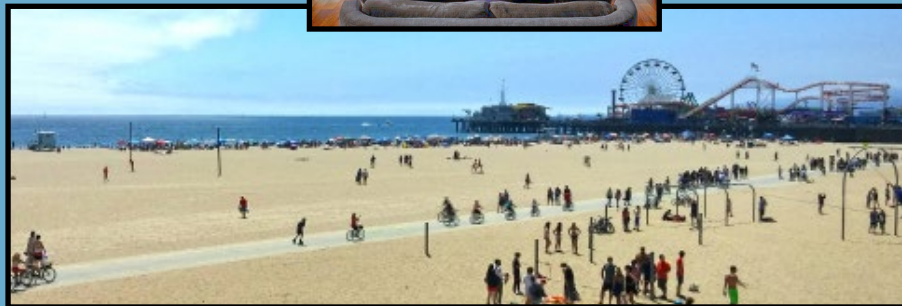
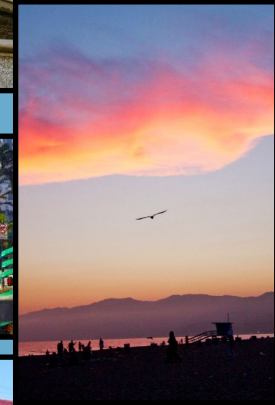
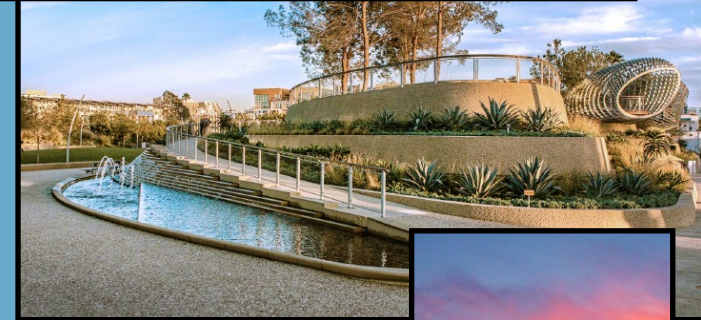
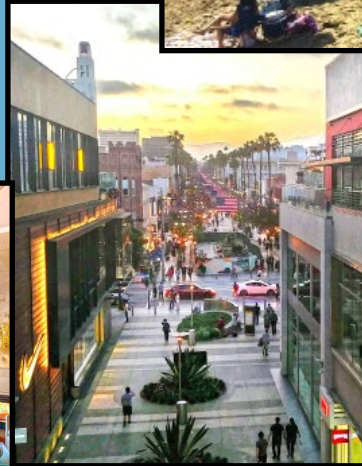
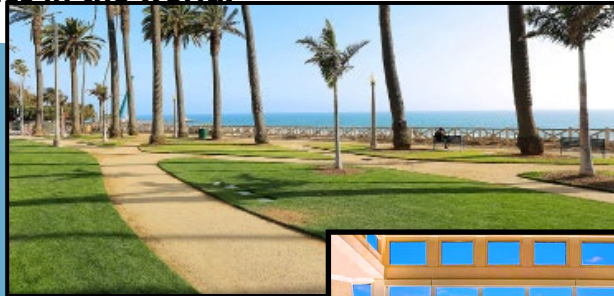
RAFAEL PADILLA
310.395.2663 X102
RAFAEL@PARCOMMERCIAL.COM
LIC# 009601

JOHN MOUDAKIS
310.395.2663 X116
JOHNM@PARCOMMERCIAL.COM
LIC# 01833441

All information furnished is from sources deemed reliable and which we believe to be correct, but no representation or guarantee is given as to its accuracy and is subject to errors and omissions. All measurements are approximate and have not been verified by Broker. You are advised to conduct an independent investigation to verify all information.

SANTA MONICA

Santa Monica is a world-class shopping, dining and entertainment destination just a stone's throw from the Pacific Ocean. Over 24 million visitors a year come from around the globe to visit Santa Monica, named one of National Geographic's top ten beach cities in the world.



www.parcommercial.com

RAFAEL PADILLA

310.395.2663 X102

RAFAEL@PARCOMMERCIAL.COM

LIC# 009601

JOHN MOUDAKIS

310.395.2663 X116

JOHNM@PARCOMMERCIAL.COM

LIC# 01833441

All information furnished is from sources deemed reliable and which we believe to be correct, but no representation or guarantee is given as to its accuracy and is subject to errors and omissions. All measurements are approximate and have not been verified by Broker. You are advised to conduct an independent investigation to verify all information.